





- Interstate: 935 miles
- High Volume: 2990 miles
- Low Volume: 1955 miles

High Volume:

>1000 AADT

Centerline miles – 3,295, 67%  
80% of the Lane Miles  
98% of the VMT

Low Volume

<1000 AADT

Centerline miles – 1,955, 33%  
20% of the Lane Miles  
2% of the VMT

# Success

2008 – Maintenance Management Levels

Interstate

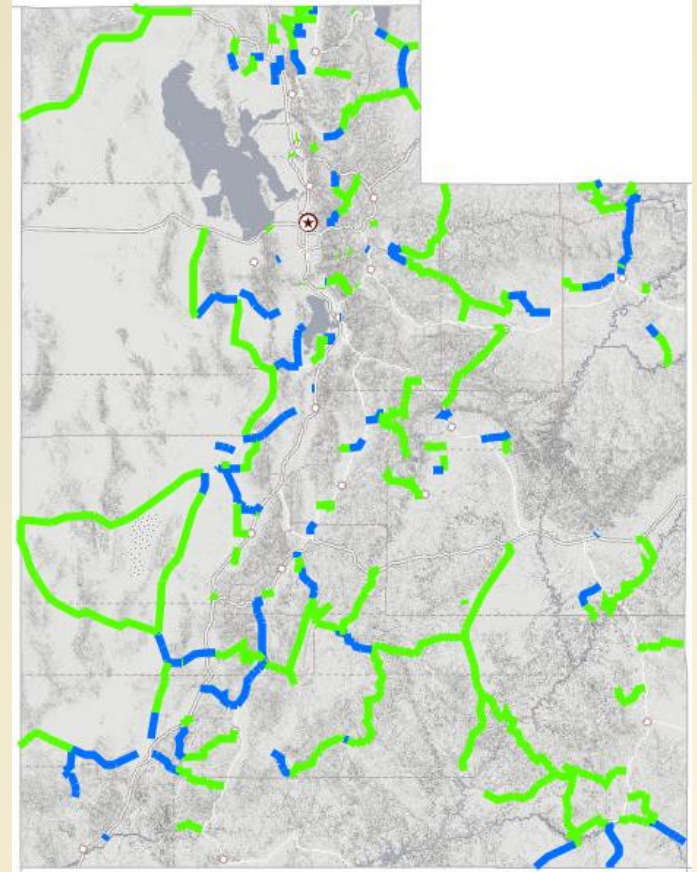
Level 1

Level 2

Level 2 roads – No preservation/rehabilitation dollars

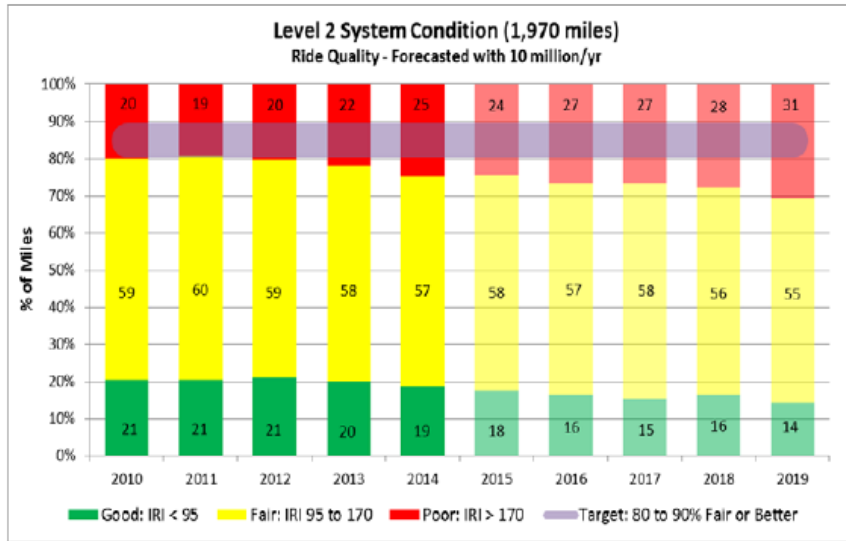
State maintenance budget – chip seals, limited overlays, etc.

2016 – Increased the gas tax to fund low volume roads

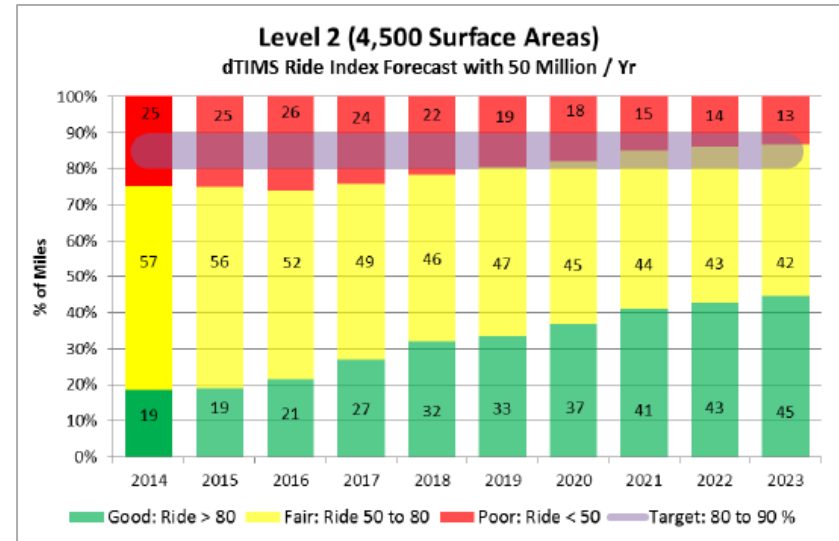


# Low Volume Roads Level 2

## \$10M Funding



## \$50M Funding



# Challenge

- How do we manage all of our assets (pavement, bridges, culverts, ATMS, etc.) with limited budget?
- How do we help the decision makers understand/prioritize the needs?
- Given statewide budget, how do we allocate between regions?

# Pavement Committee

- Pavement Management Working Group
  - 4 Pavement Management Engineers, 1 Region Materials Engineer, Central Pavement Management Staff, and consultant.
  - Reviewed model
  - Recommend funding level to maintain pavement system
  - Recommend funding distribution between regions

# 4 Regions

## 1. Ogden

1. Davis, Weber, Morgan, Box Elder, Cache, and Rich Counties
  1. Population 712,079
2. 975 centerline miles of road, 16.6%
3. 4,225 Lane Miles, 17.8%

## 2. Salt Lake

1. Tooele, Salt Lake, and Summit Counties
  1. Population 1,124,207
2. 840 centerline miles of road, 14.3%
3. 4,770 Lane Miles, 20.1%

## 3. Orem

1. Juab, Utah, Wasatch, Duchesne, Uintah, and Daggett County
  1. Population 602,594
2. 1,045 centerline miles, 17.8%
3. 4,210 Lane miles, 17.8%

## 4. Richfield

1. Beaver, Carbon, Emery, Garfield, Grand, Iron, Kane, Millard, Piute, San Juan, Sanpete, Sevier, Washington, and Wayne
  1. Population 324,886
2. 3,020 centerline miles, 51.4%
3. 10,480 Lane miles, 44.2%

