

MANUFACTURERS OF PAVEMENT PRESERVATION PRODUCTS SINCE

1976

Presented by Jeremiah Stratton

CRAFCO[®] INC
AN **ERGON** COMPANY

Czech Republic

Breclaw

China

Wuxi

United States

California Wyoming Arizona Ohio Pennsylvania Tennessee

PAVEMENT PRESERVATION

Worldwide Manufacturing Locations

PAVEMENT PRESERVATION PRODUCTS

Equipment
Joint Sealing-PCC
Crack Sealing-AC/PCC
Pavement Joint Adhesive
Patching-Asphalt/Concrete
Reflective Crack Mitigation
Asphaltic Bridge Joint System
Bridge Deck Waterproofing System

Equipment

Sealant
Melter Applicators



Pavement Routers



Patching Material
Melter Applicators



TWO TYPES OF SILICONE

- **ASTM D5893**
- **State Specifications**
- **Federal**
- **FAA – P605 (Airports)**

NON-SAG



SELF-LEVELING



ASPHALT HOT POUR JOINT/CRACK SEALANTS

ASTM D-6690:

Type I - Formerly ASTM D1190

Type II - Formerly ASTM D 3405

Type III - Formerly Fed Spec SS-S-1401C

Type IV - Formerly Low Modulus

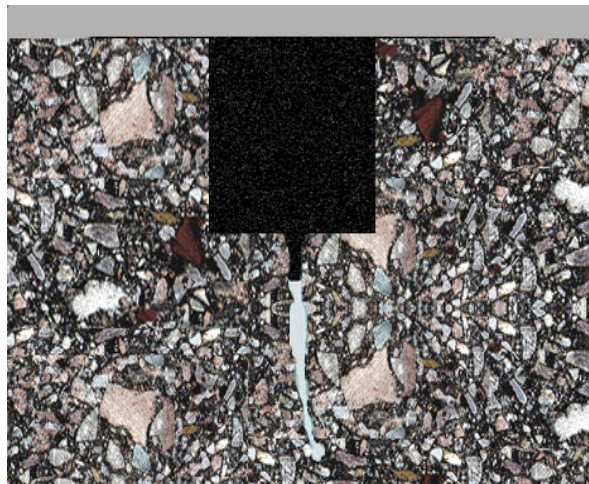
State Specifications

P 605-ASTM D-6690

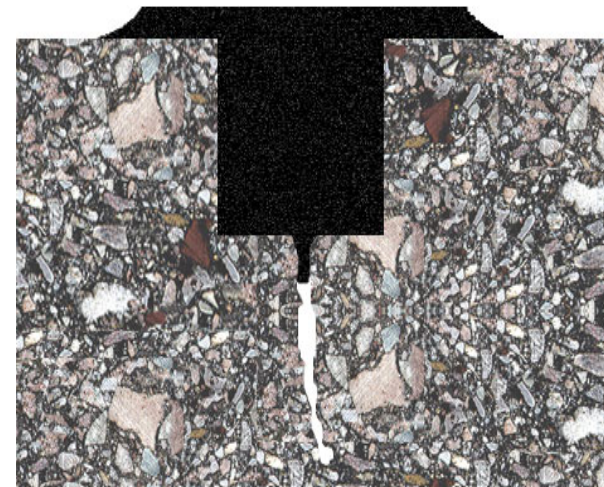
Recessed



Flush Filled



Band Aid

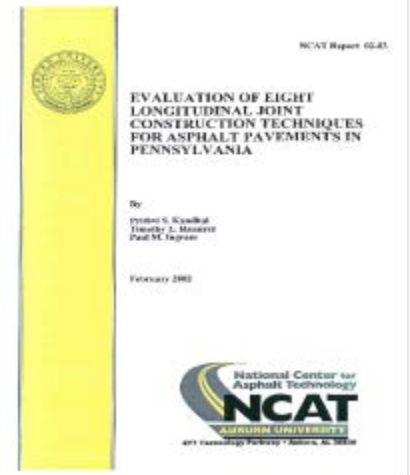


Silicone and Hot Pour Uses

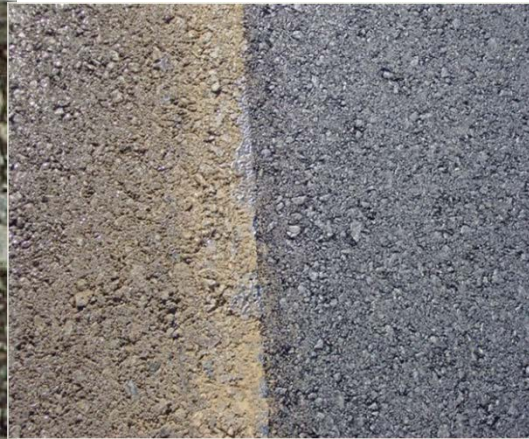
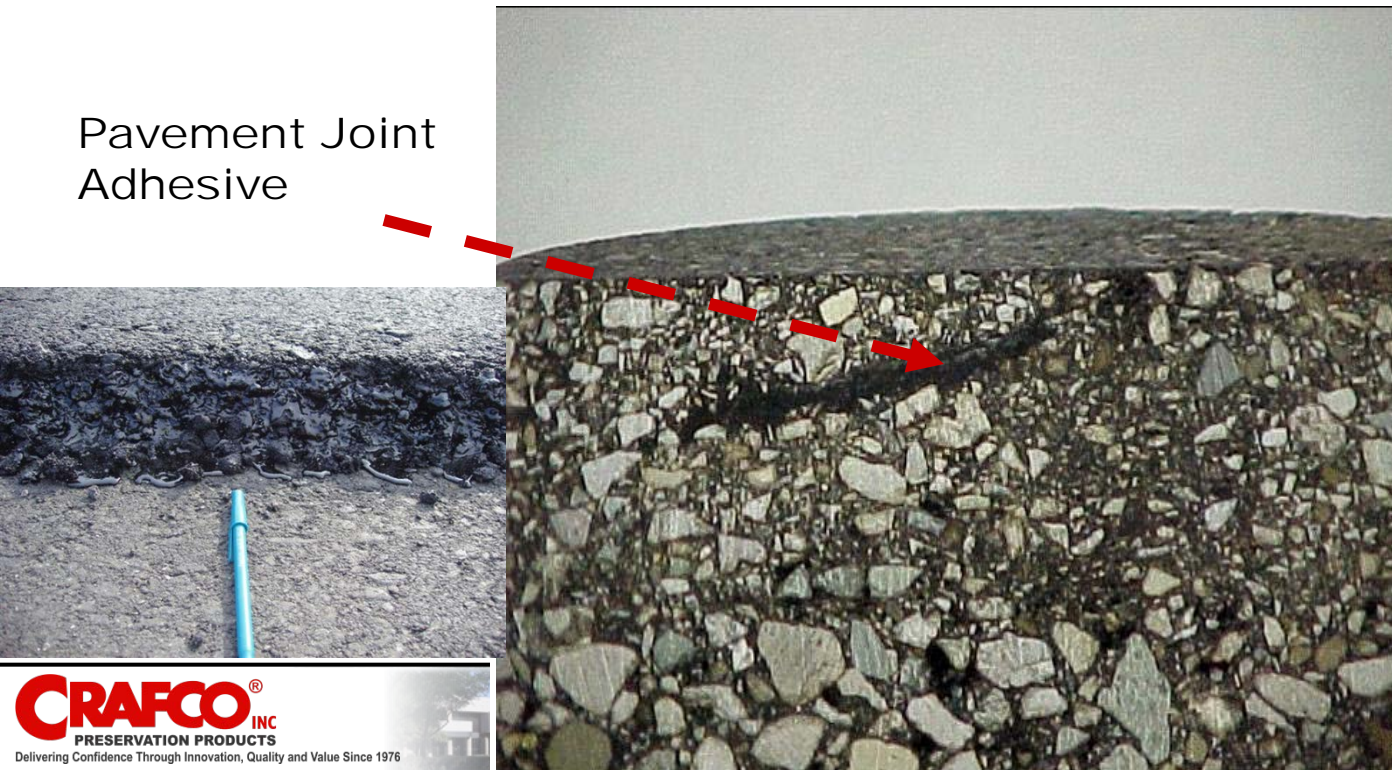
- Airports-Runways, Taxiways, Aprons
- State DOT's-Highways, Bridges,
- Municipalities-Streets, Sidewalks, Parking Lots
- Military-Runways, Taxiways, Aprons
- Other-Parking Garages, Parking Decks, Stadiums, Driveways

Pavement Joint Adhesive

- Seals Out Water
- Bonds to Hot & Cold Pavement
- Prevents Premature Failure
- Reduces Maintenance
- No Paving Delays
- Proven Performance



Pavement Joint Adhesive



PAVEMENT REPAIR PRODUCTS



TECHCRETE – Hot Applied Polymer Modified Resin Base Flexible Concrete Repair Material

POLY PATCH/MASTIC ONE – Hot Applied Asphalt Based Material



TechCrete PCCP Spall Repair Material

TechCrete PCCP
Spall Repair
Material

Pre-blended Polymer Modified Resin Extended with Select Aggregate for Stability/Load Bearing

- Resistant to De-icing Chemicals
- Permanent Concrete Repair System
- Stays Flexible
- Excellent Adhesion Properties
- High Tensile Strength
- No need to Re-establish joints
- High Compressive Resistance-never cracks



PolyPatch/Mastic One



For cracks too large for sealing and filling.
For surface repairs too small for re-paving.



- Flexible Polymer modified asphalt w/select aggregate
- Load bearing
- Prepackaged, homogeneous blend
- Adheres to both AC and PCC
- Voidless and waterproof
- Requires no compaction
- Feathered edge installation
- Year round installations



HP Concrete and HP Asphalt



- Single component high performance patching materials.
- Concrete patching
- Asphalt patching
- Works in all weather conditions
- 50 pound bags to use what is needed



RTE 113 / RTE 1, Milford, DE -
Placed September 2012



GEO COMPOSITES

Heavy duty two and three layer membranes that are placed over joints and cracks on an asphalt or concrete pavement that is going to be overlaid with asphalt or as a waterproofing system for bridges.

GeoTac Peel and Stick Waterproofing Membrane.

Thickness-.065" (1.65 mm) min.

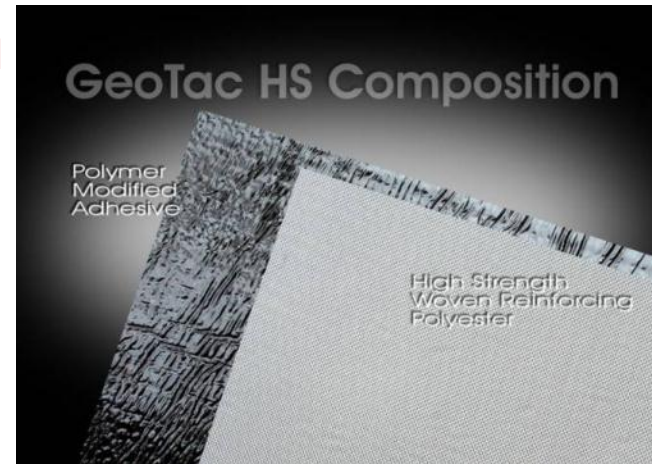


• Comes in Width of **12", 18", 24", 36", 48"**
Areas of Use:

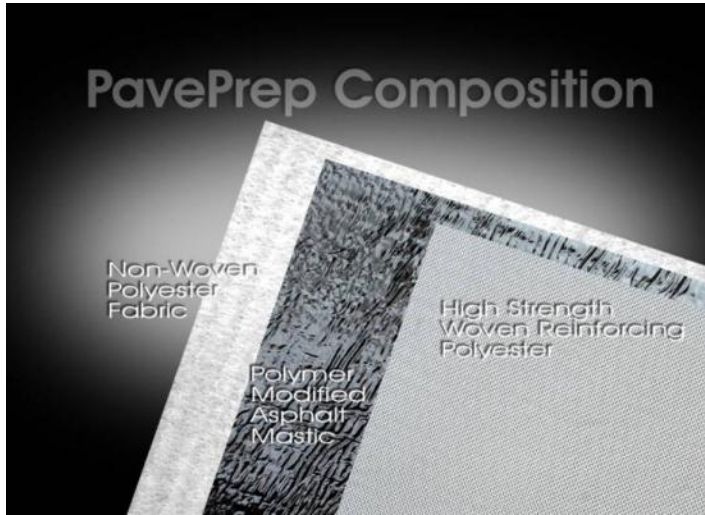
- **Bridge Decks**
- **Pavement Cracks/Joints**
- **Parking Garages**
- **Deck Surfaces**

GeoTac HS High Strength Peel and Stick Membrane used to Waterproof and Reinforce Pavement Cracks and Joints.

Thickness-.065" (1.65 mm) min.

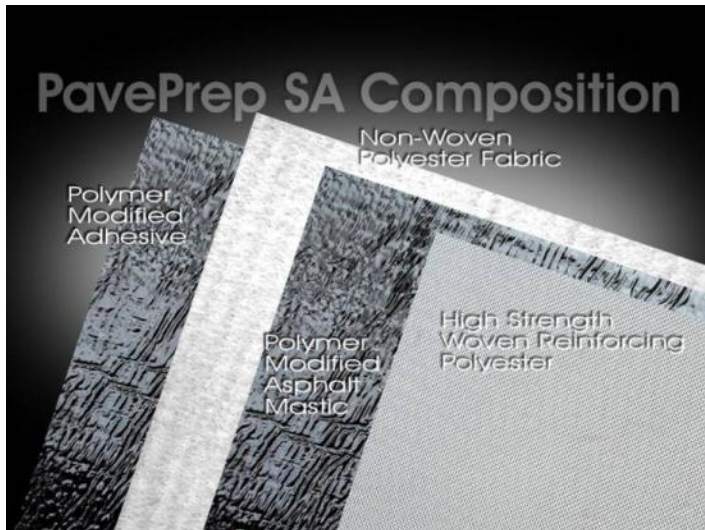


GEO COMPOSITES



PavePrep/PavePrep SA (self-adhesive Heavy Duty, High Strength Membrane used to Reinforce and Waterproof Pavement Crack and Joints, Reduce Reflective Cracking of Asphalt Overlays and a Heavy Duty Bridge Deck Waterproofing membrane.

Thickness: 0.135" (3.4mm) min.
Comes in Widths of 12", 18", 20", 24", 36", 48"



PavePrep TSA (thin self-adhesive)

Designed with the same Strength Characteristics as PavePrep and PavePrep SA but can be used in 1 ½" Overlays.

Thickness: 0.115" (2.0-2.9 mm) min.
Comes in Widths of 12", 24", 48"

- Transverse and Longitudinal cracks/joints (highways, city streets, county streets)
- Utility cuts
- Construction joints
- Bridge Deck waterproofing membrane
- Airport Runways and Taxiways

ASPHALTIC PLUG BRIDGE JOINT SYSTEM USES

Matrix 501

Pre-blended

Matrix 502

Field Blended

EXPANSION JOINTS

FIXED END JOINTS at ABUTMENTS

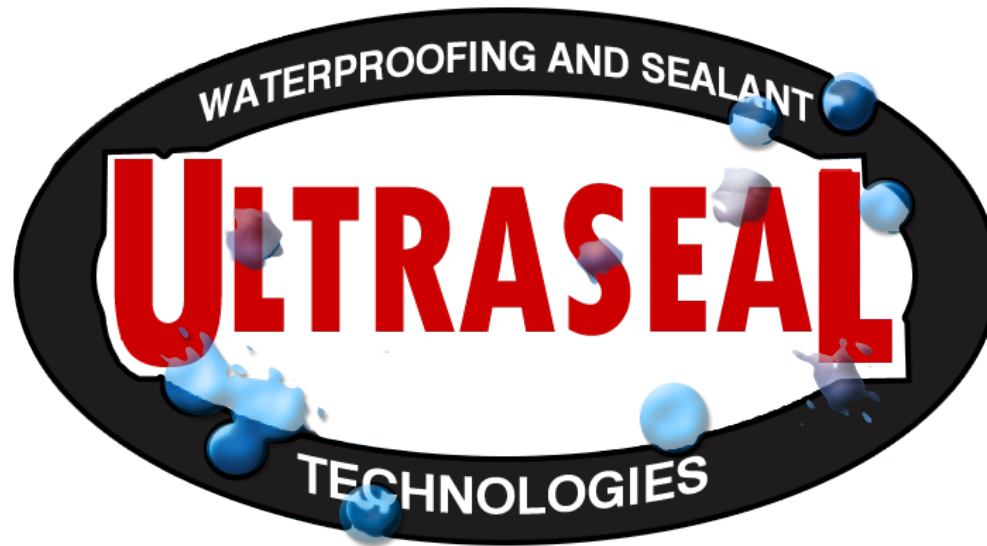
PIERS IN MANY TYPES OF BRIDGES

BOTH SIMPLE AND MULTISPAN

NEW or REHABILITATION

**PRESSURE RELIEF JOINTS ON BRIDGE
APPROACH SLABS**





Bridge Deck & Parking Deck Waterproofing System





- Overlay
- Protection Board
- Membrane
- Reinforced Fabric
- Membrane
- Primer
- Concrete



CRAFCO WEBSITE

WWW.CRAFCO.COM

- **Product Data Sheets**
- **MSDS**
- **Application Instructions**
- **Construction Specifications**
- **Videos**