

Excellence in Transportation

Every Trip, Every Mode, Every Dollar, Everyone

Presentation to Northeast Pavement Preservation Partnership Conference
April 29, 2015

How do we achieve excellence?

- Responsive to Travelers Needs
- Shorten Project Delivery
- Employ Performance Management
- Utilize Innovative Technologies and Business Practices

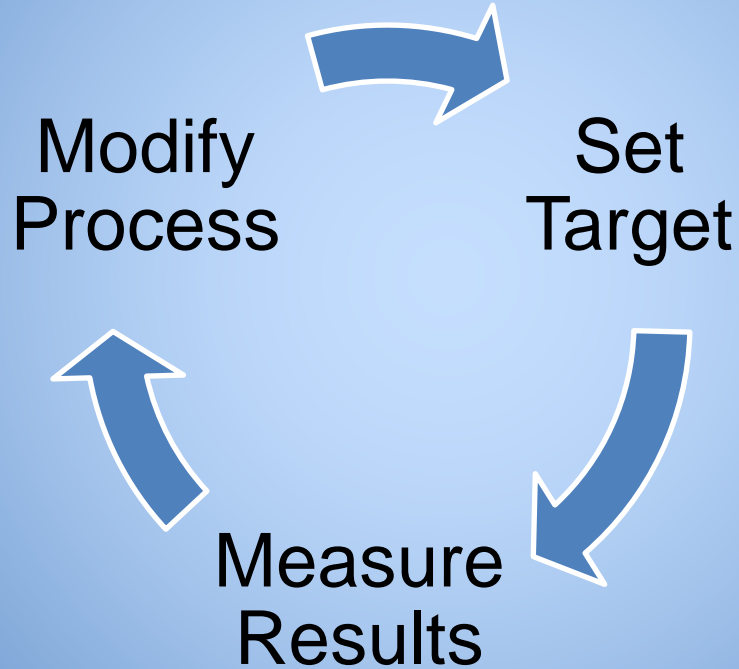
Responsive to Traveler's

- Information Delivery
 - Is it safe to travel?
 - Will my commute be on time?
- Improved Traffic Flow
 - Smooth pavement
 - Reduced congestion
- Complaint Response
 - Handle quickly
 - Respond thoroughly

Shorten Project Delivery

- Across all Project phases
 - Design
 - RW Acquisition
 - Construction

Performance Management



Innovate? Why Innovate?



Areas of Innovation

- Creative Project Solutions
 - Diverging Diamond Intersection
 - High Friction Surface Treatment
 - Shoulder conversions to auxiliary lanes
 - RW Appraisal Waivers
 - RW Donations: TE's, traffic signals
 - Level III RW Cert MOU



Diverging Diamond

Areas of Innovation

- Construction Materials & Techniques
 - Prefabricated Road & Bridge Elements
 - Ultra High Performance Concrete
 - Slide-in Bridge Construction
 - Utility RFID Tags
 - e-Construction

Case Study in Innovation



BR 1-366 on Chesapeake City Road

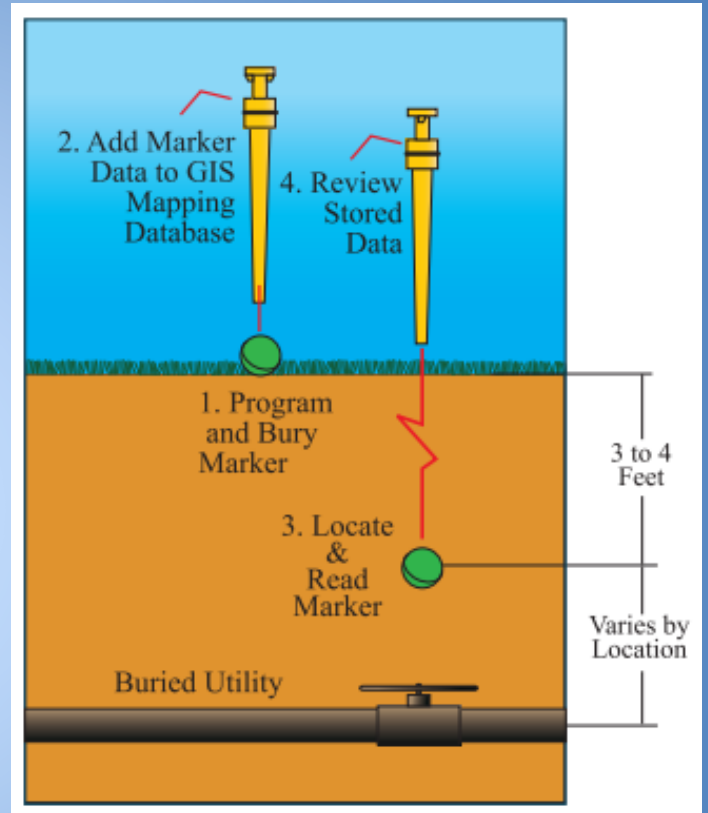


<http://youtu.be/lgyCHyXTAe0>

Slide-in Bridge Construction - US 131 in Michigan



Utility information is transmitted through a laptop computer to each portable locating device prior to burial. 3M Dynatel EMS 1400 Series iD ball markers can distinguish between seven utility frequencies and between adjacent markers of the same frequency.



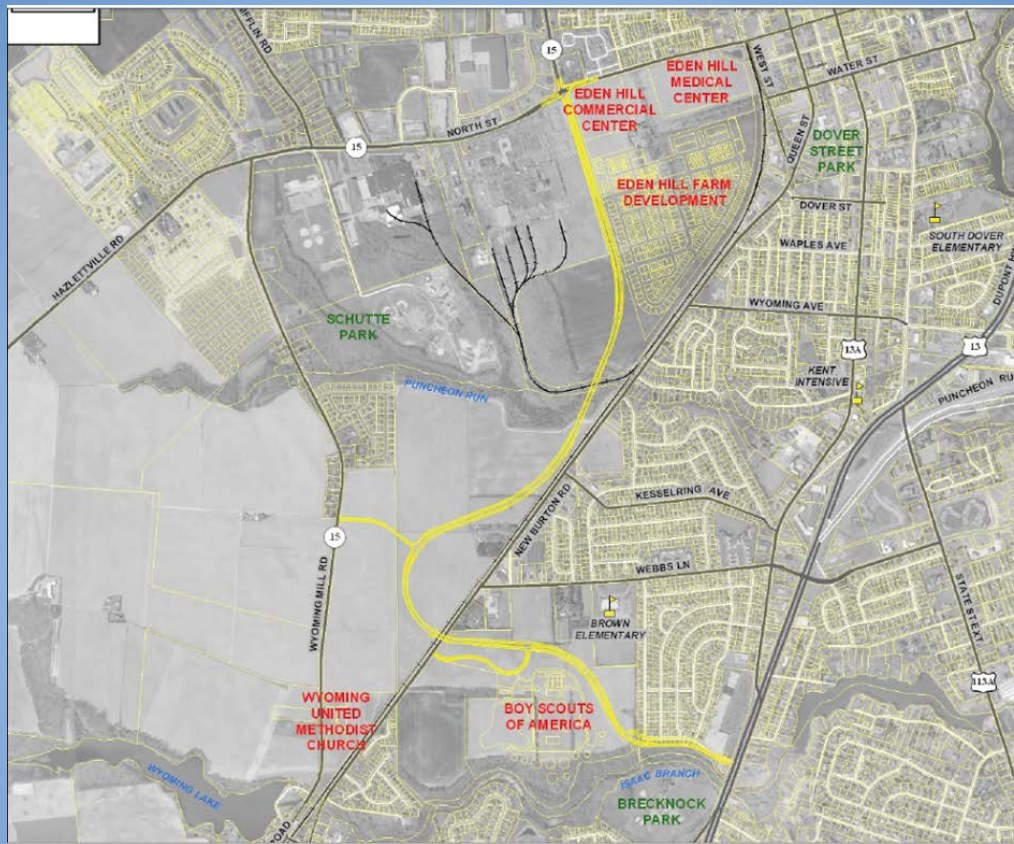
RFID Tags

Areas of Innovation

- Contracting Methods & Procurement
 - Design-Bid-Build with ATC
 - Design-Build
 - Design-Build to Budget
 - Best Value
 - CM/GC

Projects Coming Soon!

- West Dover Connector
- SR-1 Thompsonville
- SR-1 Little Heaven
- Howell School Rd
- SR 141 Ramps G & F
- US 301
- SR-1 Widening



West Dover Connector



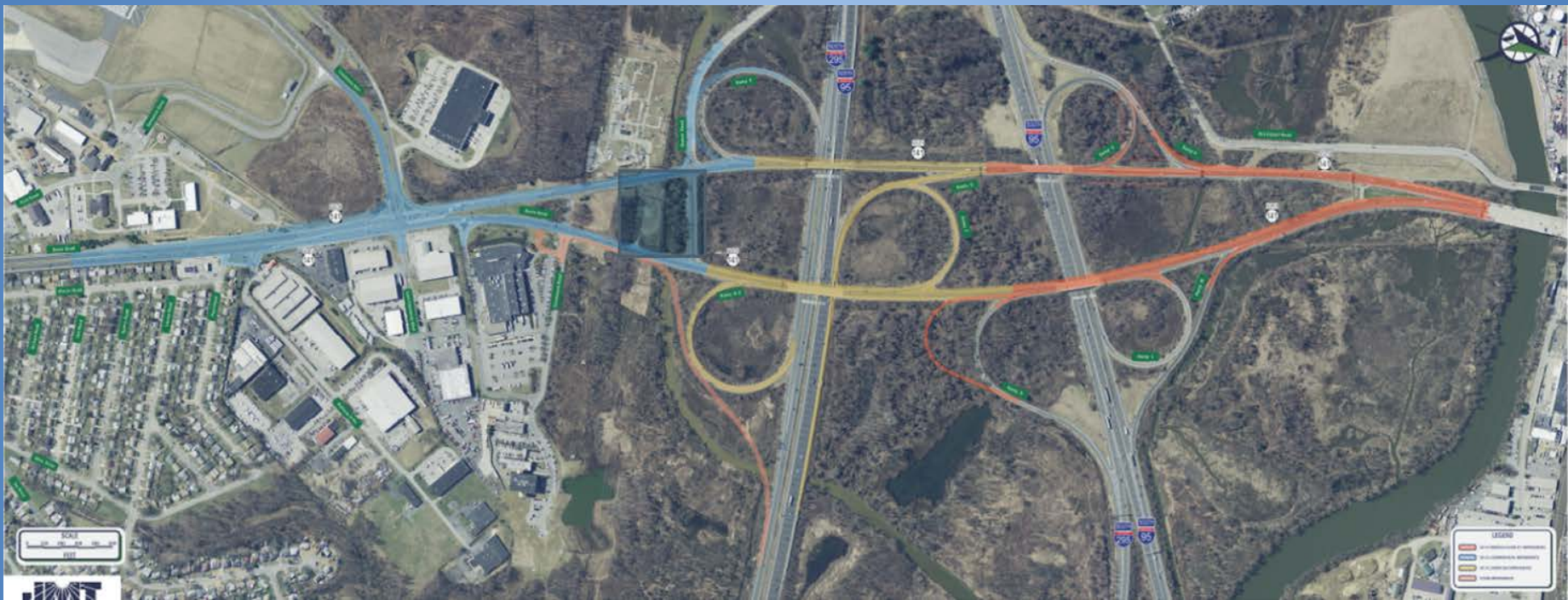
SR-1 Thompsonville



SR-1 Little Heaven



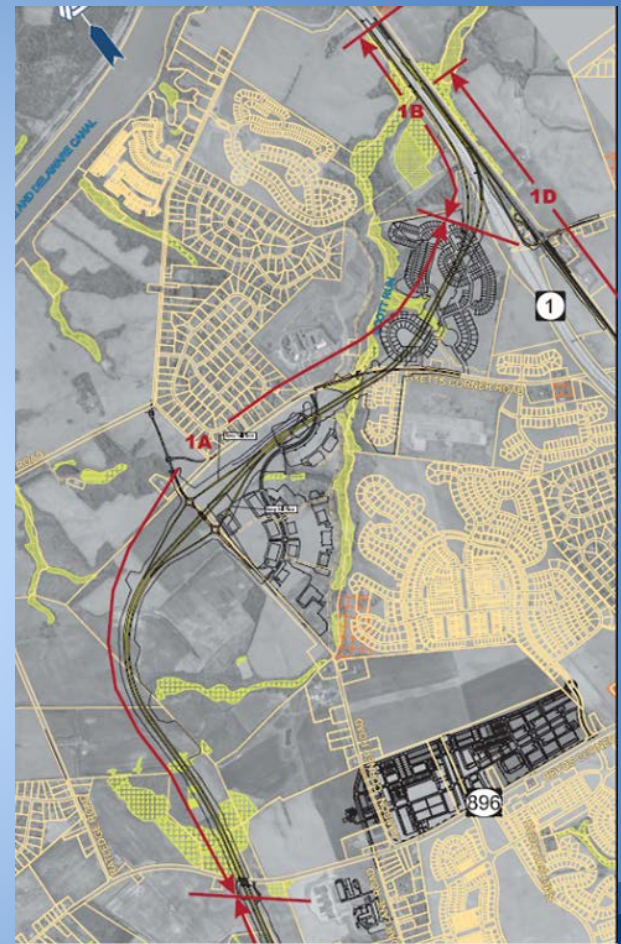
Howell School Road

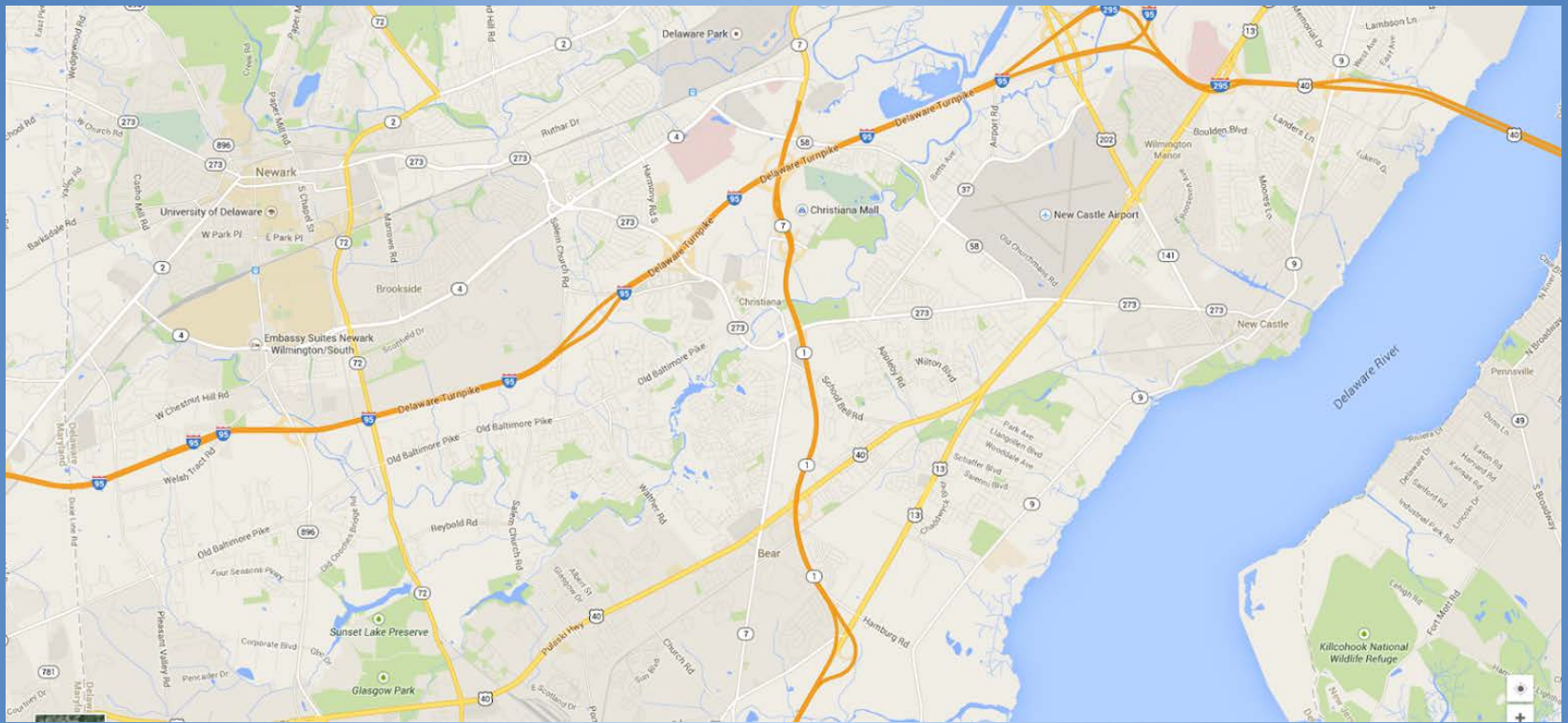


SR-141 & I-95 Interchange Improvements



US 301





SR-1 Widening

Questions?

Rob McCleary, Chief Engineer
robert.mccleary@state.de.us

DeIDOT