



Pavement Sub-Structure Scanning

**Northeast Pavement Preservation Partnership
March 7-9, 2014**



- Founded in 1987
- Subsurface NDE Evaluations
 - Highway and airfield pavements
 - Bridge and Parking Decks
 - Floor slabs, tunnels, pipelines, railroad tracks
- Projects in 50 US states and overseas

Typical Infrasense Pavement Projects

- Network Level Pavement Structure Evaluation
 - 1550 lane miles in ND, 23 Airfields in SC
- Project Level Pavement Subsurface Evaluation
 - Identify Extent of Concrete Base
 - Determine layer structure and remaining life (w/FWD)
 - Map AC thickness for mill and recycle
 - Identify and map subsurface voids
- Mapping Density of New AC Pavement



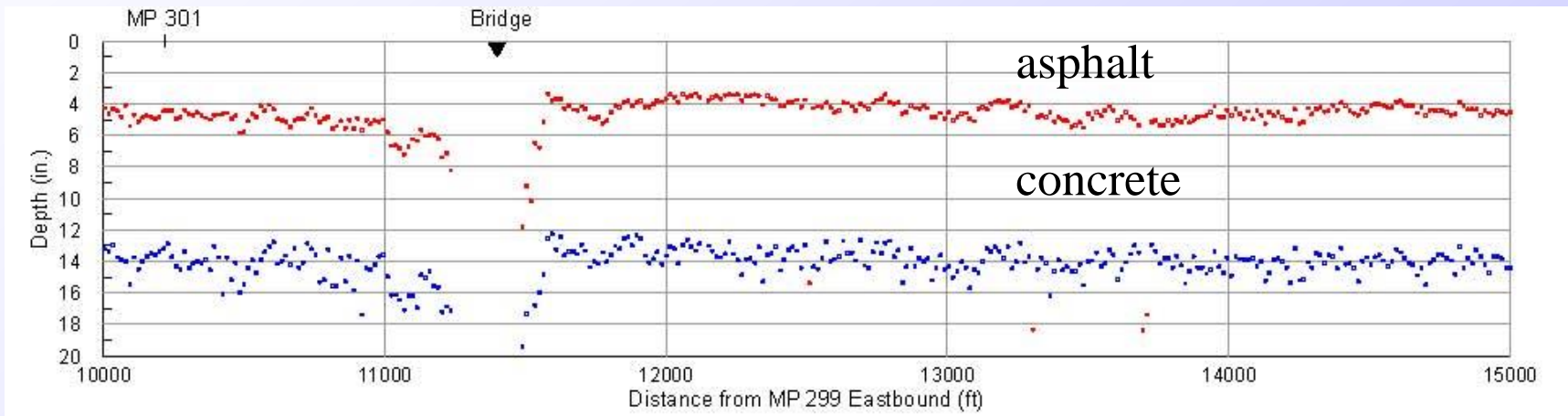
GPR Equipment Setup





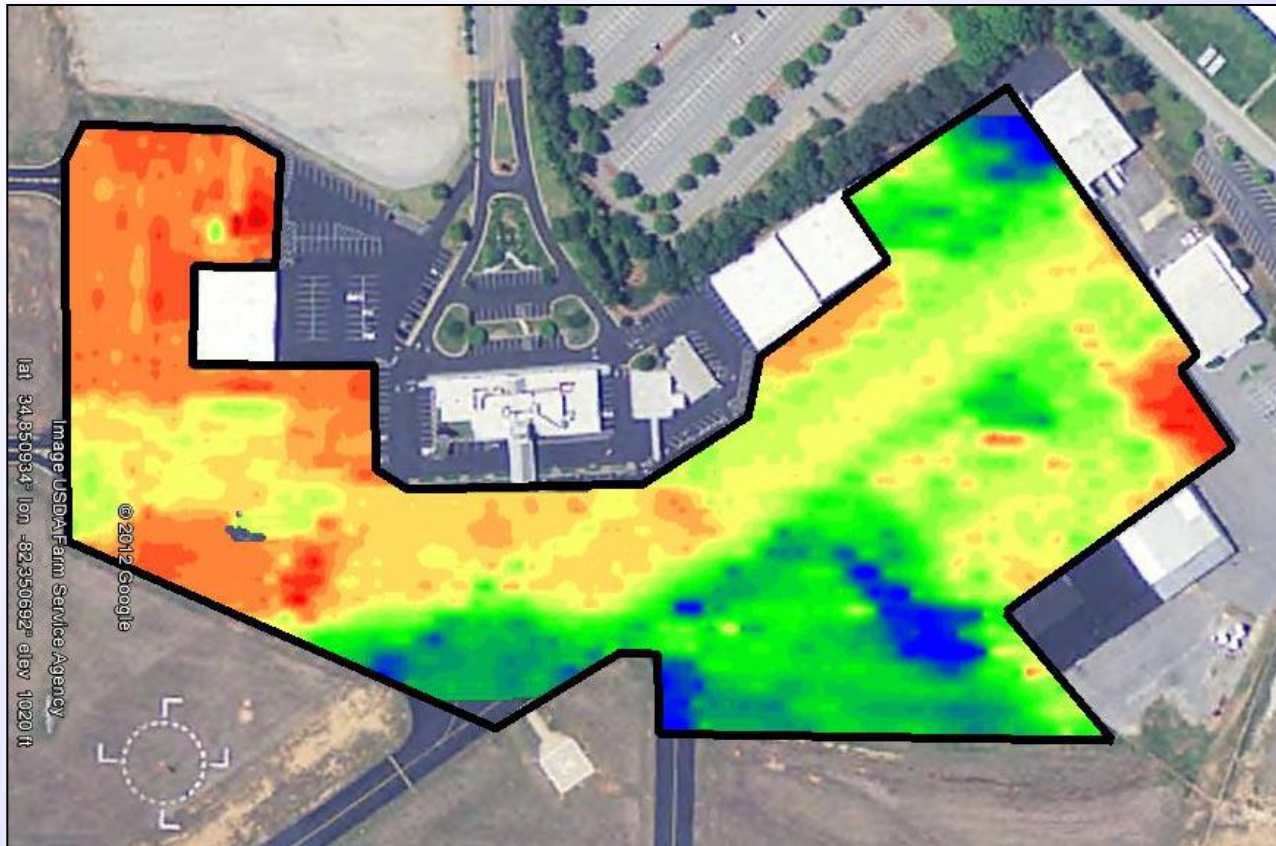
Pavement Layer Thickness

PA Turnpike

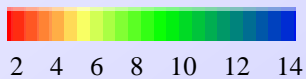




Apron Thickness Map



Thickness scale





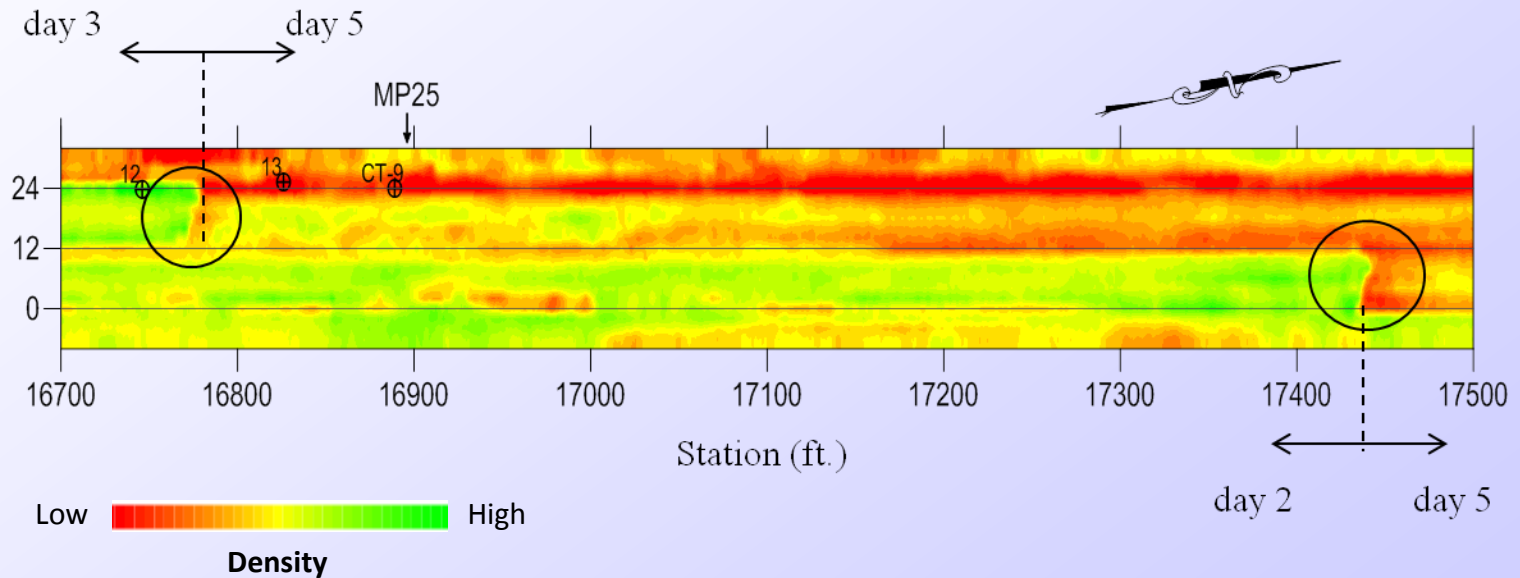
Identifying Pavement Structure Changes Rt. 2, Glastonbury, CT



Red	AC over base (not PCC)
Green	AC over PCC



Mapping Pavement Density Rt. 125, Lee NH





Detecting Voids Beneath Pavement

LeClaire, IA

