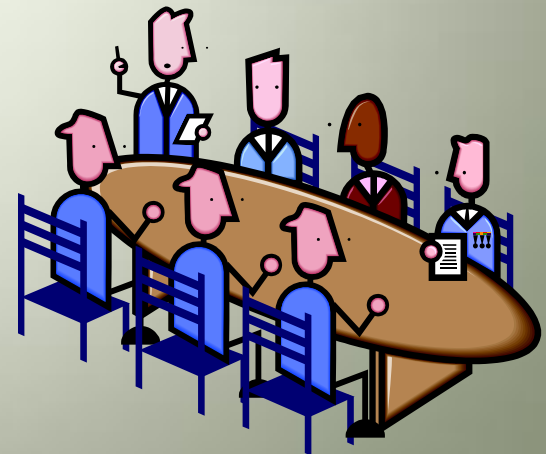




- Wisconsin's Future Direction
 - Not just pavement preservation
 - We call it Performance Based Maintenance (PBM)
 - \$ 9.0 million for Pilot year



- 2014 is the Pilot year for PBM
- How we got here
 - Changed a Law / Statute to allow for different “contracting”
 - Allocated new funding
 - Formed a Steering Group

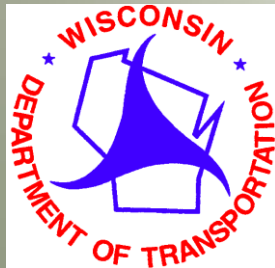
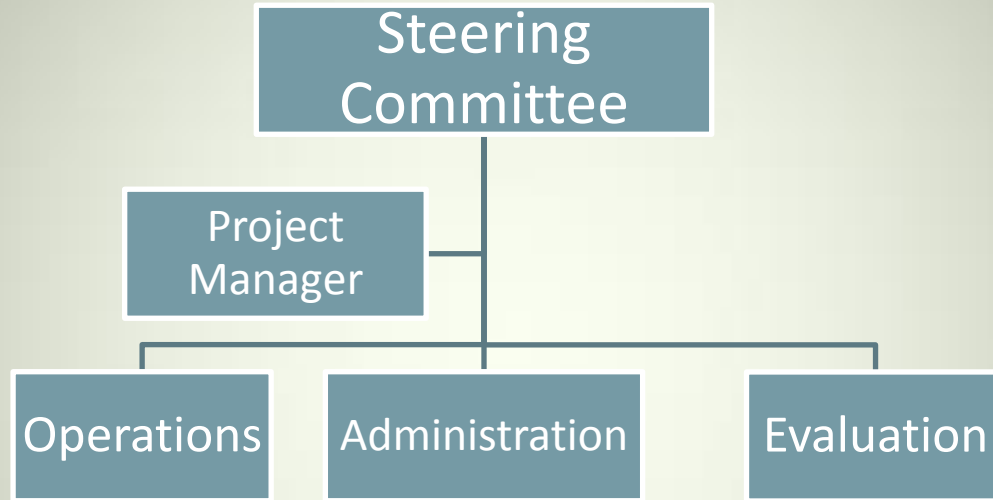




Steering Group Objectives

1. Partnership
2. Performance
3. Innovation
4. Fiscal Stewardship
5. Communication







In 2014 - Three types of work

1. Bridge Deck Cleaning & Sealing,





2. Aggregate shouldering (reducing drop-off)





3. Asphalt Crack Rout & Seal





Summary of 2014 Pilot work

- 64 Counties participated (72 total)
- Shouldering
 - 34 projects
 - 298 lane miles
- Asphalt Rout & Seal
 - 55 projects
 - 430 lane miles (35,000 total in WI)
- Structure Crack & Concrete Seal
 - 520 bridges in 21 Counties



New work type for 2015 PBM work

- Seal coats, Fog Seals & Chip Seals