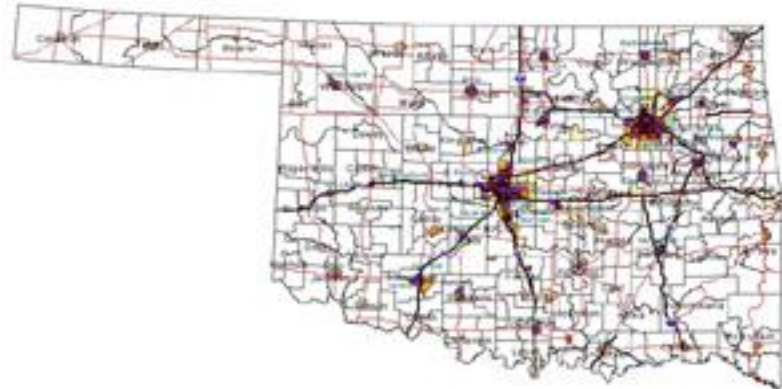




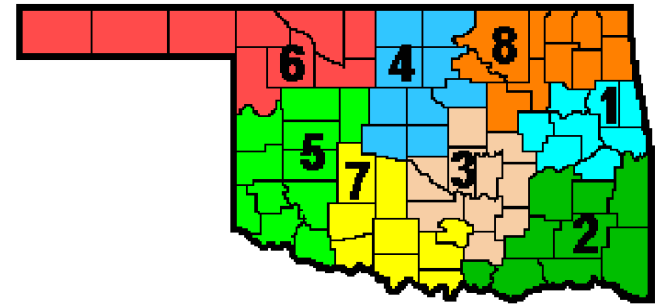
In- Place Recycling Oklahoma



Taylor Henderson, P.E.

(Oklahoma Department of Transportation)

Oklahoma- Background



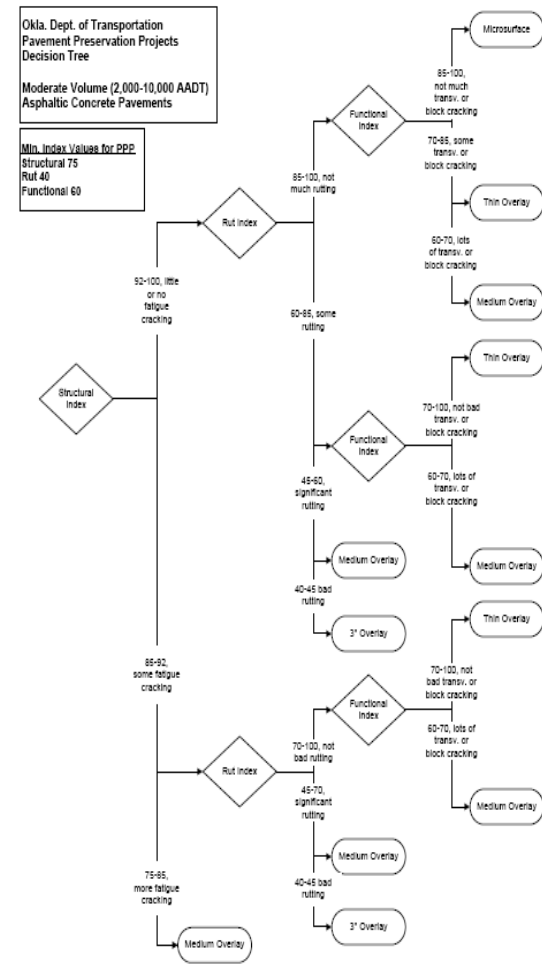
- Area-69,919 square miles –Ranked 20th
- Population 3,642,361 -Ranked 28th
- Oklahoma has 13,000 centerline miles (31,500 lanes miles) State highway system – 17th in Nation-miles maintained by SHA
- Interstates/ other NHS: 930/3,344 center line miles
- 77 Counties; ODOT has 8- Divisions- 25 Residencies

Transportation Budget

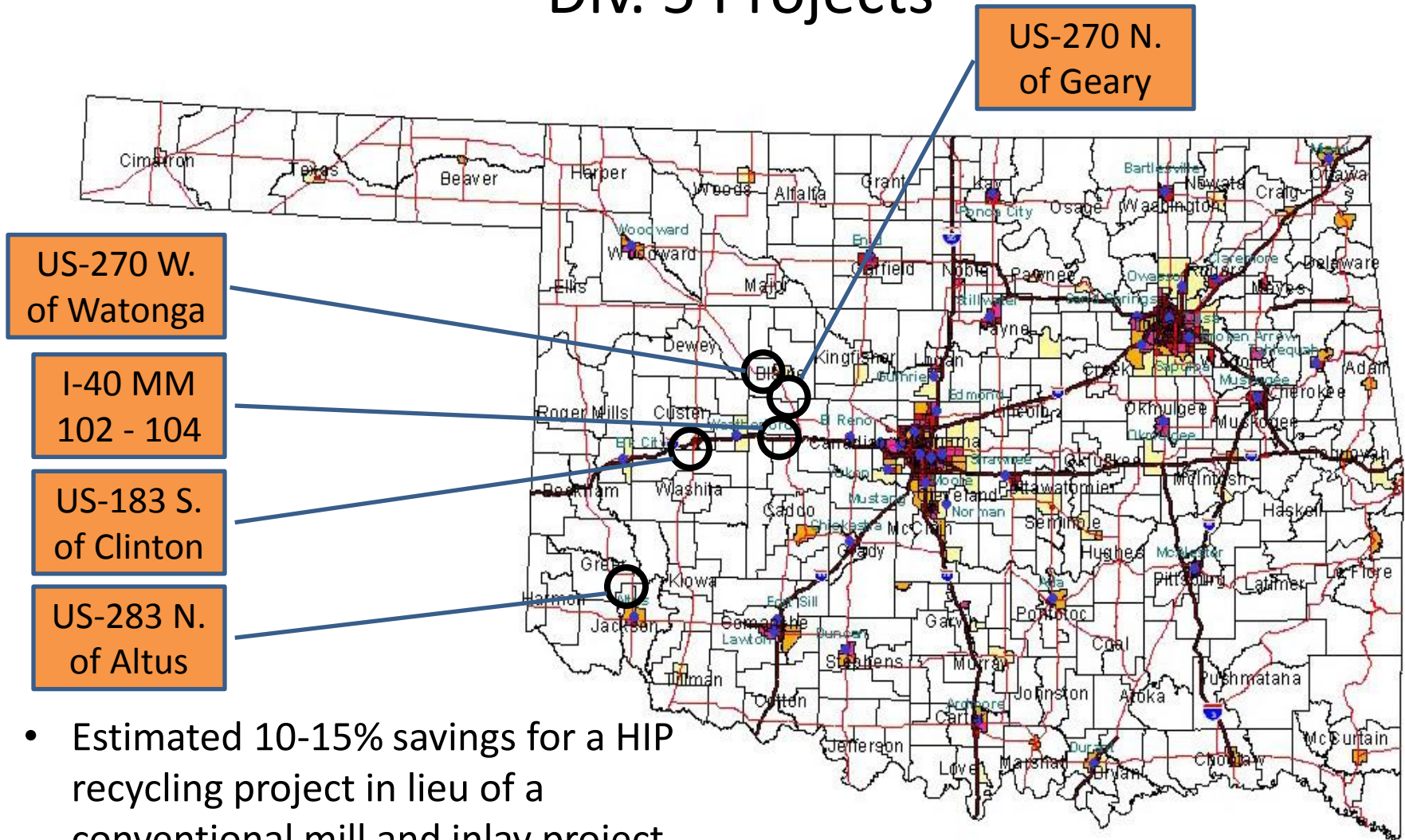
- State Transportation Budget FY-2011: 1.46 billion(State \$737 million & Federal \$730 million)
- ARRA FY-2009: 464.75 million obligated
- State Maintenance Budget FY 2014: \$160 million
- Pavement Preservation Program: Started in 2004, funding about \$30 million annually

Pavement Preservation Program-3P

- Concept- Keeping Good road in good conditions
- Based on Pavement Management Data: Condition & structural indices, traffic data and local conditions
- Different options includes Hot In Place recycling (in lieu of medium overlay)



Past HIR Projects Div. 5 Projects



- Estimated 10-15% savings for a HIP recycling project in lieu of a conventional mill and inlay project
- Most Division 5 projects are within a 50 mile radius of a rock quarry.

Concerns & Issues

- Non -availability of local contractor & technical expertise
- Local support from asphalt industry
- Comfort level of engineers
- Oklahoma – Conservative state in recycling
- Some failure in the past- premature failure of designed pavement- QC issues
- Good quality of aggregates available locally
- ODOT maintenance likes to use RAP- milled materials

THANK YOU

