

**2013
Rocky Mountain West
Pavement Preservation Partnership
Nevada State Report**



Tracy Larkin-Thomason, P.E.
Deputy Director

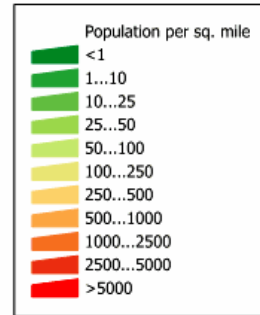
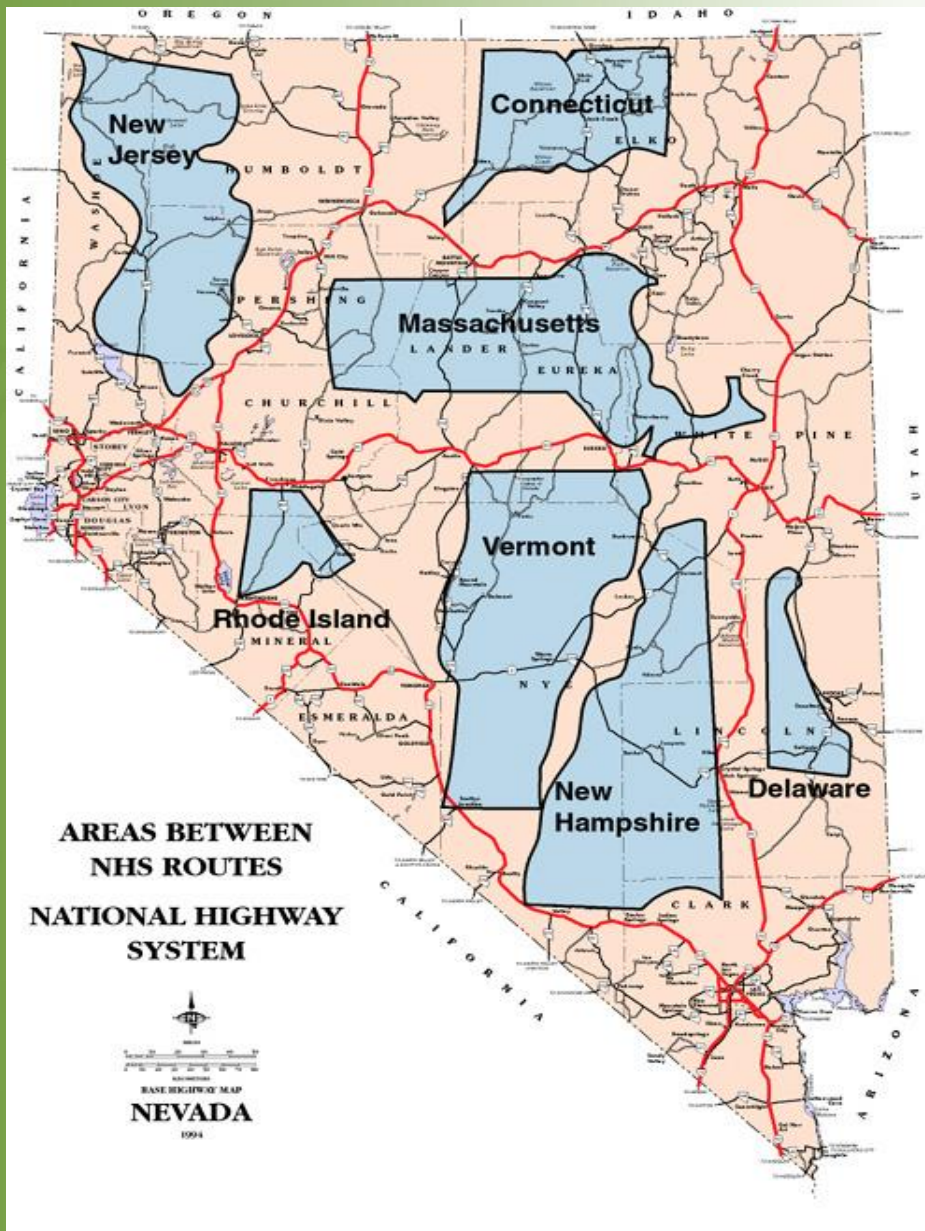
Anita Bush, P.E.
Chief Maintenance and Asset Management Engineer



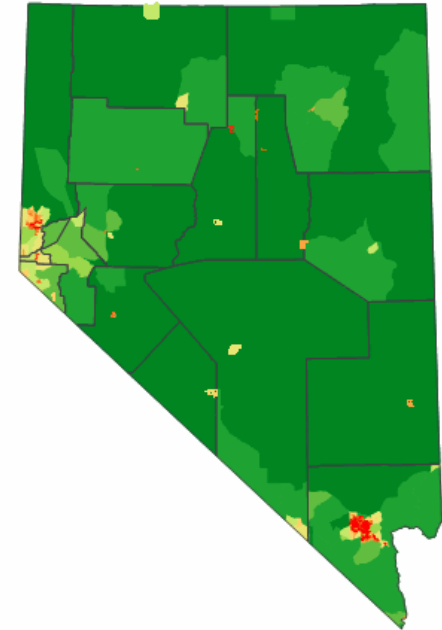
NV DOT Basic Demographics



- State Highway System Description
 - 5384 Total Centerline Miles (4% concrete)
- Number of State Highway Employees: 1700 + 300 seasonal
- Total State Highway Budget: \$826M (FY12) \$591M
- Total Pavement Preservation Budget: \$126M + \$37M (FY12) \$65M + \$34M
- Major Pavement Preservation Treatments
 - Mill/ Fill, Microsurfacing, Chip seals, CIR, Dowel bar retrofit, Diamond grinding



Source: U. S. Census Bureau
Census 2000 Summary File 1
population by census tract.



**NDOT maintained system is
5384 centerline miles (clm)**

Total NHS 2549 clm

Local NHS 154 clm

1972 public bridges

1116 NDOT bridges

7th biggest, 35th most populous

Nevada



Strength

Program Implementation

Internal coordination

Materials

Weakness

Performance Monitoring

Training

Quality Control & Quality Assurance

Equipment

Opportunity

Pavement Management System

Preservation Treatments

Research and Development

Public / Key Decision Maker /
Legislator Relations

Threat

Project Selection

Business Process

Limited Funding

Funding Equity

Nevada is from the Spanish word meaning "snowcapped."



NEVADA STATE BIRD

The Mountain Bluebird (*Sialia currucoides*) lives in the Nevada high country and destroys many harmful insects. It is a member of the thrush family, and its song is a clear, short warble like the caroling of a robin. The male is azure blue with a white belly, while the female is brown with a bluish rump, tail, and wings.

