

Rocky Mountain Pavement Preservation Partnership

Anita Bush, PE

Chief Maintenance and Asset Management Engineer, Nevada DOT

Immediate Past Chair



State Agencies

- Alaska Department of Transportation
- Arizona Department of Transportation
- California Department of Transportation
- Colorado Department of Transportation
- Hawaii Department of Transportation
- Idaho Department of Transportation
- Montana Department of Transportation
- Nevada Department of Transportation
- New Mexico Department of Transportation
- Oregon Department of Transportation
- Utah Department of Transportation
- Washington State Department of Transportation
- Wyoming Department of Transportation



Other members

Local agencies

- City and County of Denver
- County of Riverside
- Regional Transportation Commission
- Metropolitan Transportation Commission

Industry - Regional

- Crafco, Inc
- CTS Cement Manufacturing Corporation | Rapid Set
- Western Emulsions Inc.
- Wright Asphalt
- Simon Contractors
- Holbrook Asphalt
- Intermountain

Academia

- California Pavement Preservation Center
- Federal Highway Administration
- University of Nevada, Reno



Board Members

Steering Committee

| <i>Name</i> | <i>Organization</i> | <i>Role</i> |
|--------------------|---------------------------------|----------------------|
| Mike Santi | Idaho Transportation Department | Chair |
| Michael San Angelo | Alaska DOT | Vice-Chair |
| Mary Gayle Padmos | Montana DOT | Secretary/Treasurer |
| Anita Bush | Nevada DOT | Immediate Past Chair |

Additional Directors

| <i>Name</i> | <i>Organization</i> | <i>Role</i> |
|---------------|--------------------------------|---------------------|
| John Coplantz | Oregon DOT | State Agency Member |
| Steve Henry | Colorado DOT | At-Large Member |
| David Pashkin | Applied Pavement Technologies | At-Large Member |
| Mark Beatty | Holbrook Asphalt | Industry Member |
| Ryan Proctor | Ergon Asphalt | Industry Member |
| Gary Hicks | CPPC | Academic Member |
| Steve Mueller | Federal Highway Administration | Ex-officio Member |

Activities Completed or Underway

Task groups

- MAP 21 report
- Research
- Specifications and guides
- Promotional
- Communication and Terminology
- Cost Effectiveness

Map 21 Performance Measures

- Task force formed at meeting in Nashville, TN – August 2012
- Lloyd Neely – UDOT and Steve Mueller – FHWA group leaders
- Conference call in November 2012 with 10 participants including Thomas Van from FHWA's Office of Asset Management.
- Reviewed AASHTO Subcommittee on Performance Measurement's recommendations for MAP-21 performance measures
- Most states agreed with IRI as a possible measure expressed concerns using ProVal for system level data
- Other factors to be considered included friction – skid index, percent of network sealed, rut (consistent measurement), cracking, and using data from pavement management systems not HPMS

Research Task Force

Contacted other Partnerships for research contacts

Survey Results

- Identify agencies either conducting or sponsoring pavement preservation research:

AK (2); NV (2); WA (3)

- Identify the top two Research Needs related to Pavement Preservation in your DOT or Agency:

included Service Life/benefit; Materials;

Performance and Pavement Management

Research Task Force (cont)

- Identify Pavement Preservation Treatments DOT or Agency use and if used as Regular Maintenance Treatments and or Pavement Preservation Treatments: **11+ responses Chip Seal/Crack Seal/Overlay;**
8 – 10 responses Fog Seal/Slurry Seal/Microsurfacing;
Concrete:
11+ Joint sealing and diamond grinding;
8 -10 responses Load Transfer Restoration
- Agencies currently tracking Pavement Management System the 'Service Life' of Pavement Preservation Projects:
NM, WA, WY, NV
- Rating the overall success (quality and workmanship) of Pavement Preservation Projects constructed in your DOT or Agency:
8 Almost always successful
- DOT or Agency participation in a Regional Pavement Preservation Partnership: **12 yes**

Specifications and Guidelines

Scope: To develop standardized emulsion specifications and collect best practice guidelines.

- **Phase 1: Emulsion Specifications**

Regional agencies polled for chip emulsion specifications.

Specifications for chip seal emulsions completed in 2011.

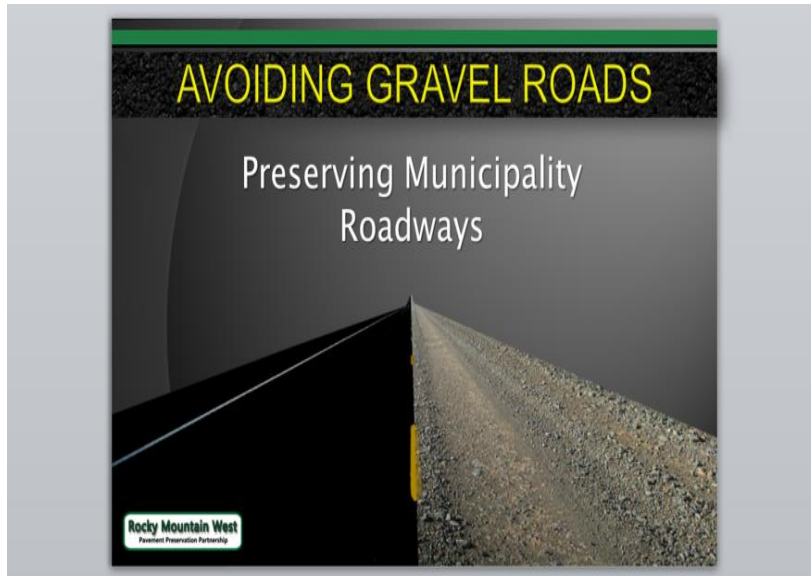
These specifications include: CRS-2, CRS-2H, and CRS-2P with latex and solid polymer.

- **Phase 2: Best Practices**

Best practices information collected.

The task group is working on how to make this information available.

Promotional Task Force



Developed presentation
2011

- Assembled case studies for savings using pavement preservation
- Identifying marketing plan for MPO's and Local agencies
- 86 presentations

Cost Effectiveness

Scope : Quantify the benefits of pavement preservation treatments.

Communications and Terminology

Scope : Develop a dictionary of pavement preservation Terminology used by member states.

2013 Annual Meeting

Anchorage, Alaska

October 7 – 9th, 2013

- Pavement Preservation and Asset Management
- Risk Management
- MAP – 21 and Performance Measures

Technical sessions

- Friction
- Chip Seals
- Materials
- Concrete preservation



<http://tsp2pavement.pavementpreservation.org/rocky-mountain-west-rmwppp/annual-meetings/2013-2/>



2013 Meeting Summary

- 100+ Attendees
- 10 states present
- Group is very diverse
- Tasks forces are active



2014 Meeting Phoenix, AZ

*Look forward to seeing you
there*

