

# In-Place Recycling Activities in Utah Region 4

**Western States Regional In-Place Recycling Conference**

September 11 - 13

Ontario, California

Kirk Thornock, P.E.  
Asset Management Engineer  
Utah Department of Transportation, Region 4

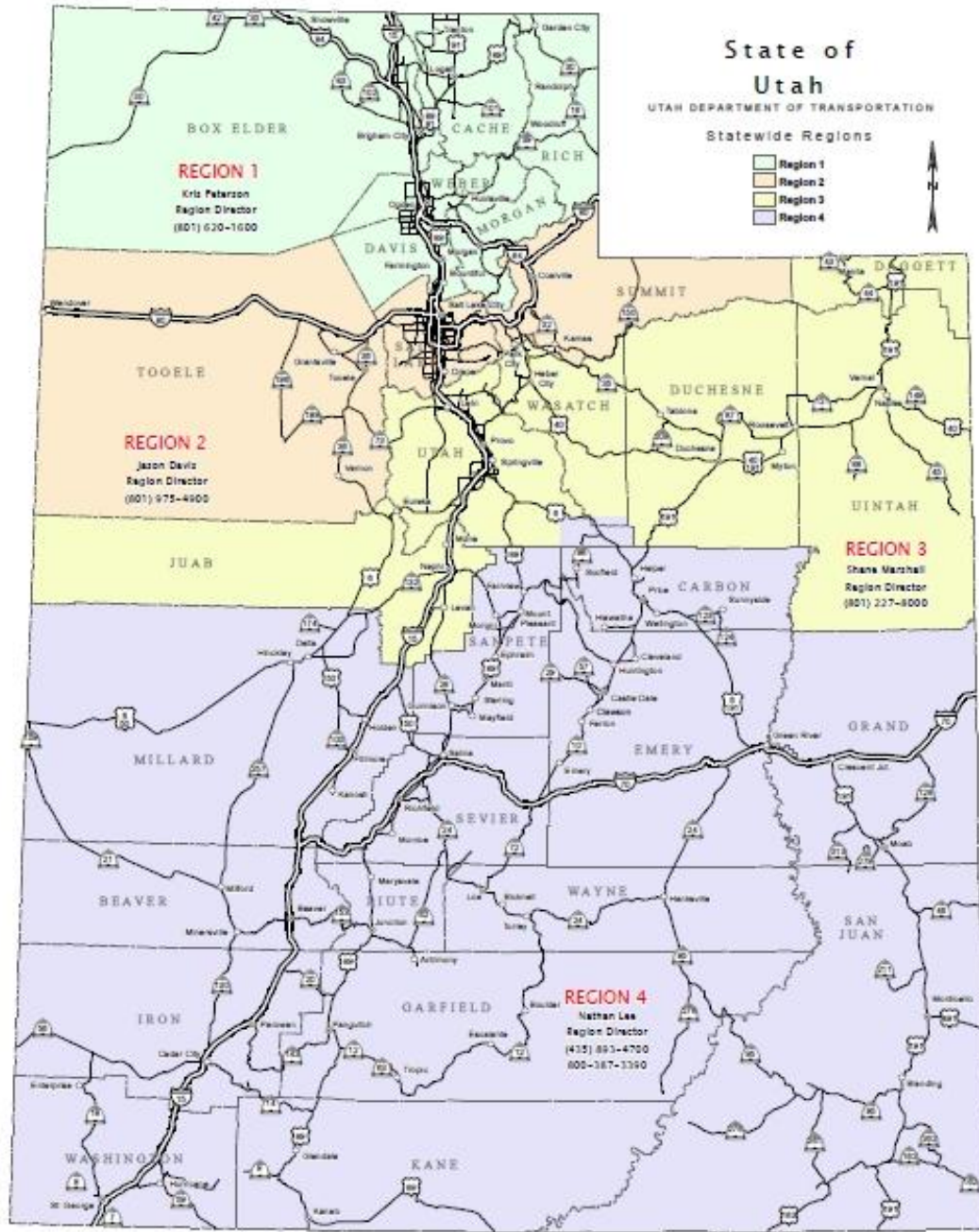


# State of Utah

UTAH DEPARTMENT OF TRANSPORTATION

## Statewide Regions

- Region 1
- Region 2
- Region 3
- Region 4



**REGION 1**  
Kris Peterson  
Region Director  
(801) 620-1600

**REGION 2**  
Jason Davis  
Region Director  
(801) 975-4900

**REGION 3**  
Shane Marshall  
Region Director  
(801) 227-8000

**REGION 4**  
Nathan Lee  
Region Director  
(435) 893-4700  
800-367-3390



# UDOT Region 4 Statistics

- 375 Region FTE's
- 10,714 Total Lane Miles (43% of State)
- 2,991 Centerline Miles (51%)
- 3,245 Interstate Lane Miles (38%)
- 426 Interstate Centerline Miles (44%)

## Preservation & Rehabilitation Projects

- 32 Projects Bid in 2012, 28 Projects Planned 2013
- \$65 M in 2012, \$101 M Planned 2013





# State Animal





# In-Place Projects

## Cold In-Place Projects

- I-15; MP 19.4 to MP 27.3 (1999)
- I-15; MP 143.8 to MP 158.5 (2000)
- I-70; MP 181.9 to MP 192.3 (2002)
- I-70; MP 175.8 to MP 181.9 (2006)
- I-70; MP 63.3 to MP 76.3 (2008)
- I-15; MP 0 to MP 6 (2008)
- US-89; MP 103.6 to MP 107.8 (2009)
- US-89; MP 107.8 to MP 115.7 (2009)
- I-15; MP 6 to MP 10.7 (2009)
- US-191; MP 140 to 145.7 (2010)
- US-89; MP 164.3 to MP 178.9 (2010)
- I-70; WB MP 17 to MP 22 (2010)
- SR-10; MP 30.8 to MP 34 (2010)

- US-89; MP 55.1 to MP 62.9 (2011)
- US-191; MP 12.5 to MP 21.3 (2011)
- US-191; MP 151 to 157.2 (2012)
- US-191; MP 106.2 to MP 108.3 (2013)

## Full Depth Reclamation Projects

- US-191; 71.5 to 72.7 (2009)
- US-491; MP 0 to MP 1.5 (2009)
- SR-10; MP 54.8 to MP 60 (2010)

## Hot In-Place Projects

- US-89; MP 246.5 to MP 254.8 (2005)
- SR-25; MP 0 to 10 (2005)



# Why We Chose to Use In-Place Recycling

- History
- Cost vs. HMA
- Success with Stripped HMA layers





# Why In-Place Recycling is Not Used More

- Limited Funds for Low Volume Roads
- Limited Applications
- In State Bias Because of Perceived Failures
- Need Better Handle On Product Received
- Limited Expertise - Core Competence
- No Method to Lab Verify







Thank You!

*Jan Parker 2005*

