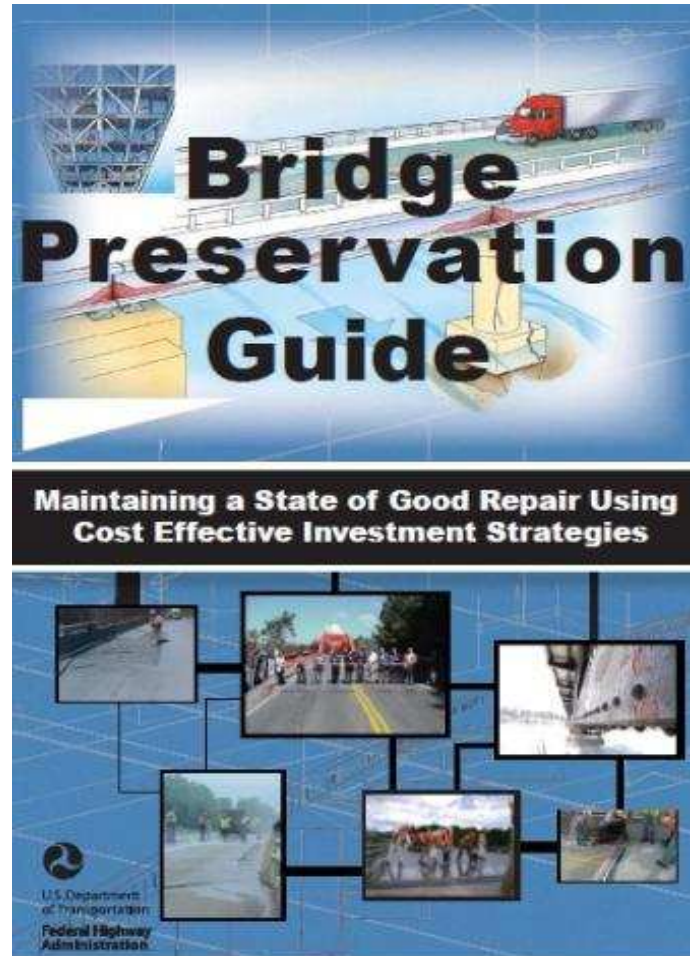




PR HIGHWAY AND TRANSPORTATION AUTHORITY
SYSTEMATIC PREVENTIVE MAINTENANCE (SPM) PROGRAM
IMPLEMENTATION PLAN

OUR PERSPECTIVE ON THE FUTURE OF THE
NATIONAL BRIDGE INVENTORY (NBI)
ASSET MANAGEMENT

Héctor R. Laureano, P.E.
Bridge Program Manager
PR Highway and Transportation Authority



<http://www.fhwa.dot.gov/preservation>



“Bridge preservation is defined as actions or strategies that prevent, delay or reduce deterioration of bridges or bridge elements, restore the function of existing bridges, keep bridges in good condition and extend their life. Preservation actions may be preventive or condition-driven.”

Source: FHWA Bridge Preservation Expert Task Group

“Bridge stewards and owners need to become, inevitably, more strategic by adopting and implementing systematic processes for bridge preservation as an integral component of their overall management of bridge assets.

A successful bridge program seeks a balanced approach to preservation and replacement. Focusing only on replacing deficient bridges while ignoring preservation needs will be inefficient and cost-prohibitive in the long term. Adopting a “worst first” approach to managing bridge assets may also yield ineffective results that allows bridges in good condition to deteriorate into the deficient category which generally is associated with higher costs and other challenges.”

BRIDGE PRESERVATION GUIDE

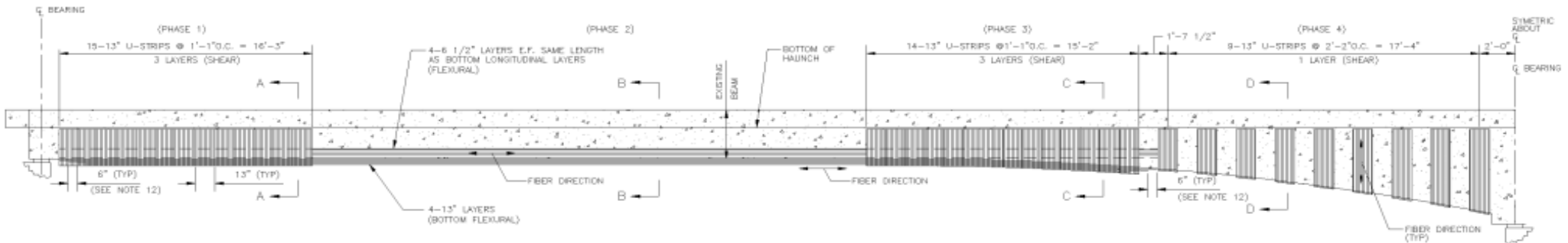


2012 MILESTONES TO BE ACHIEVED:

- a) *Implementation of a Systematic Preventive Maintenance (SPM) Program*
- b) *Use of federal funds for the HBP after a SPM Program is implemented*
- c) *Secure continuous funding for the SPM Program*
- d) *Use of innovative technologies for bridge preservation*

FRP INSTALLATION: A SUCCESS STORY





POLYMER OVERLAY WITH BROADCAST AGGREGATE

