

NJDOT

2011 Northeast Pavement Preservation Partnership Meeting Boston, MA

Susan Gresavage

Manager

Pavement and Drainage
Management & Technology

Robert Blight

Project Engineer
Bureau of Materials

NJ Characteristics

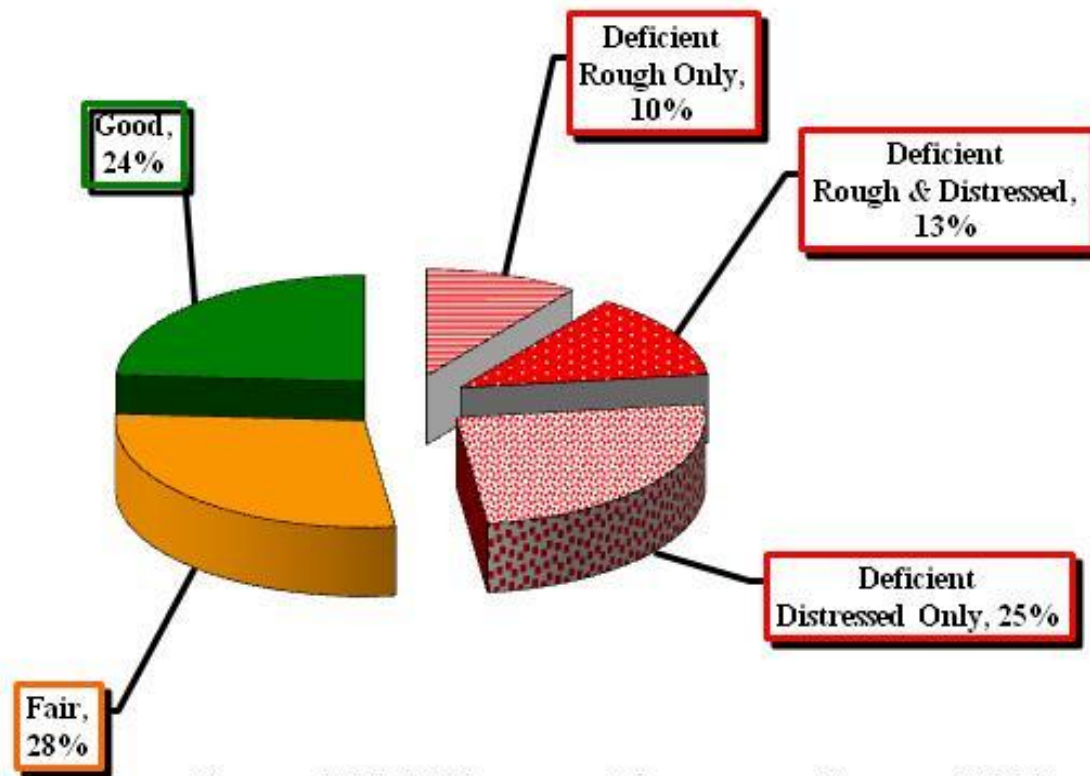
- Highest population density in the U.S. Average = 1,030 people per sq. mi. (13 times the national average)
- Only state where all its counties are classified as metropolitan areas and represented by MPO's.
- Most dense system of highways and railroads in the U.S.
- Major seaport state with the largest seaport in the U.S. located in Elizabeth.
- Greatest traffic volumes in the U.S. (3.5 times national average)

NJ State Maintained Network

- 8410 Mainline Lane Miles
- 4665 Mainline Lineal Miles
- 4649 Ramp/Shoulder Lineal Miles
- Over 50% of NJDOT road network is composite pavement, less than 6% is exposed concrete.

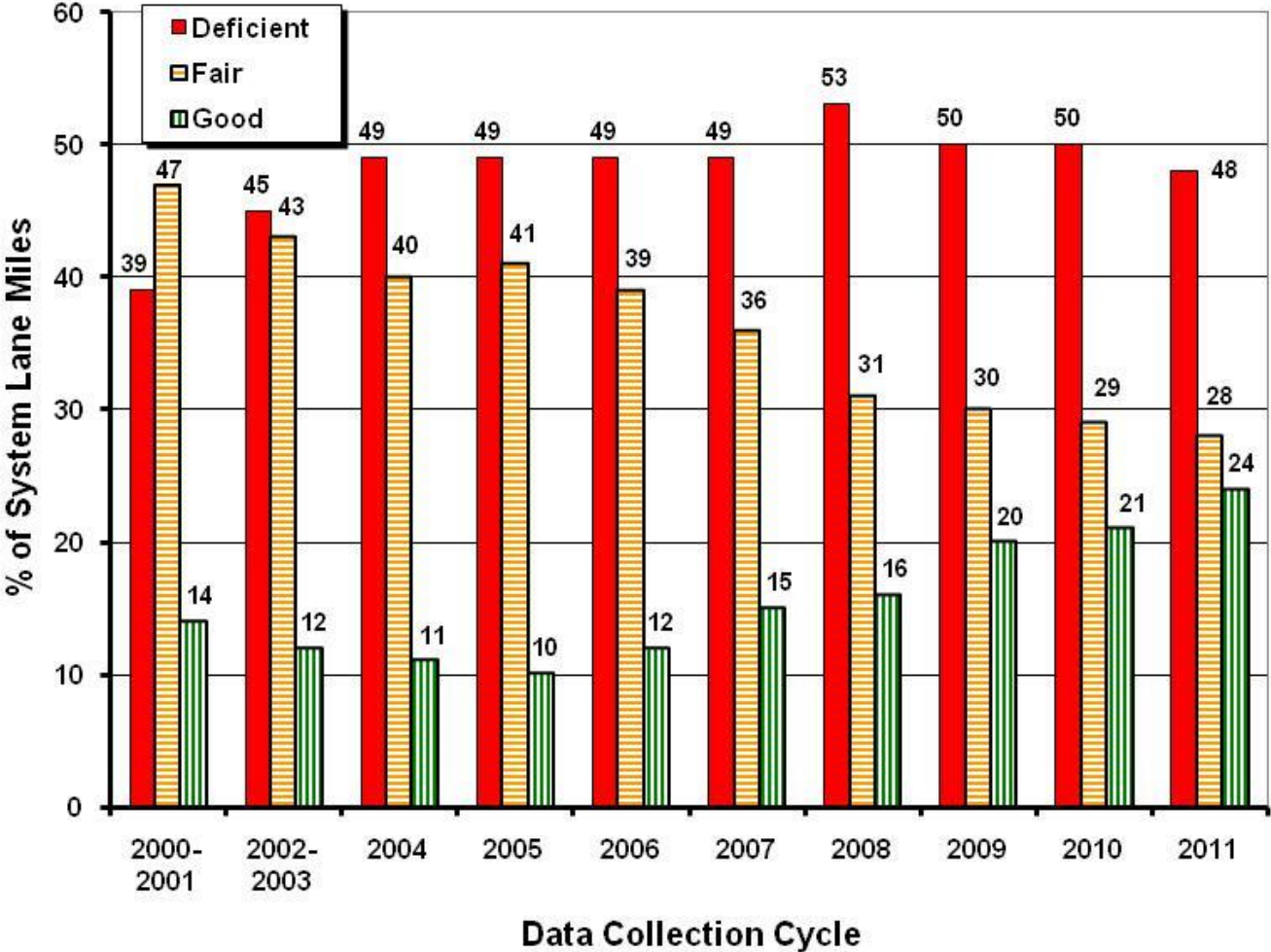
Current Network Condition

(Based on Roughness & Distress)



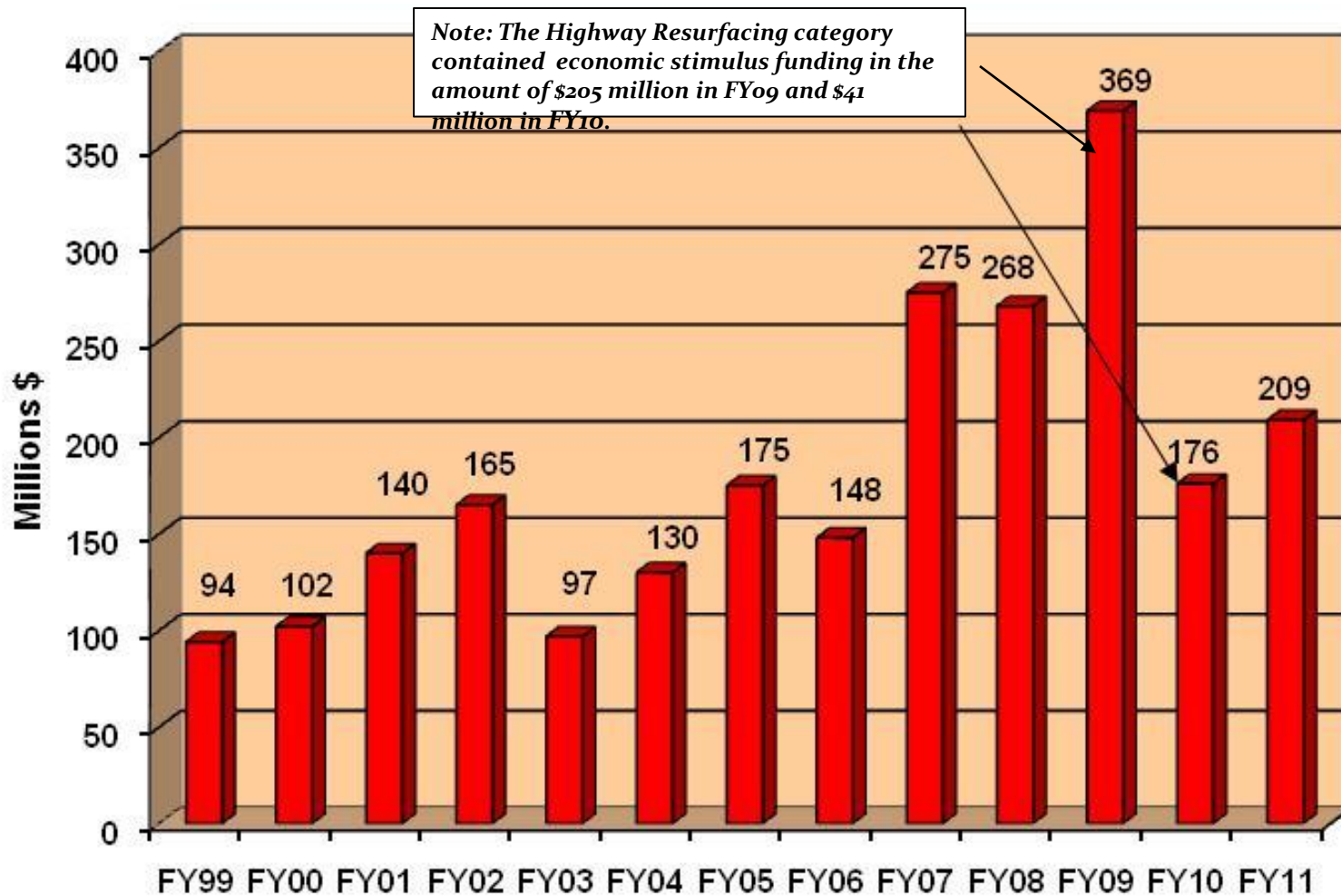
Source: NJDOT Pavement Management System, 2011 Data

Multi-Year Status of State Highway System



Source: NJDOT Pavement Management System

Pavement Funding History



Pavement Preservation Funding

2009	\$1M	2 projects	Micro w/Thin Overlay
2010	\$2M	1 project*	CPR/Diamond Grinding
2011	\$3M	2 projects	1 Ultra thin overlay & 1 Microsurfacing
2012	\$5M	6 projects	Microsurfacing

Expanding Preservation Toolbox

- Established Pavement Preservation Task Force to evaluate preservation treatments for use in NJ
- Invite presenters to meetings for various treatments.
- Treatments presented to date:
 - Microsurfacing
 - Hot In Place Recycling
- Future topics for presentation:
 - Cold In Place Recycling
 - Seals

Expanding Preservation Toolbox

- Challenges:
 - Developing Reliable Project Identification Criteria
 - Specification Development
 - QA methods
- Submitted Research Problem Statement to address these needs



Thank You!