



NEPPP Annual Meeting

May 9, 2018

Groton, Connecticut

Speakers:

Scott Bartlett

Superintendent of Public Works
Town of Fairfield, CT

Dan Patenaude, P.E.

Sales & Marketing Manager
Sealcoating, Inc.





Fairfield, CT



2016

Population = 60,855

Geographical Area = 30.3 sq. mi.

288 Centerline Miles of Road

**Over 5,000,000 S.Y.
of Pavement in Network**

**\$3,548,000
Pavement Management Budget**



Why Is Fairfield a Winner?

- **Fearless Innovators**
- **Committed to Pavement Preservation**
- **Outstanding Communicators**
- **Astute Asset Managers**
- **Regional Leaders**

Why Is Fairfield a Winner?

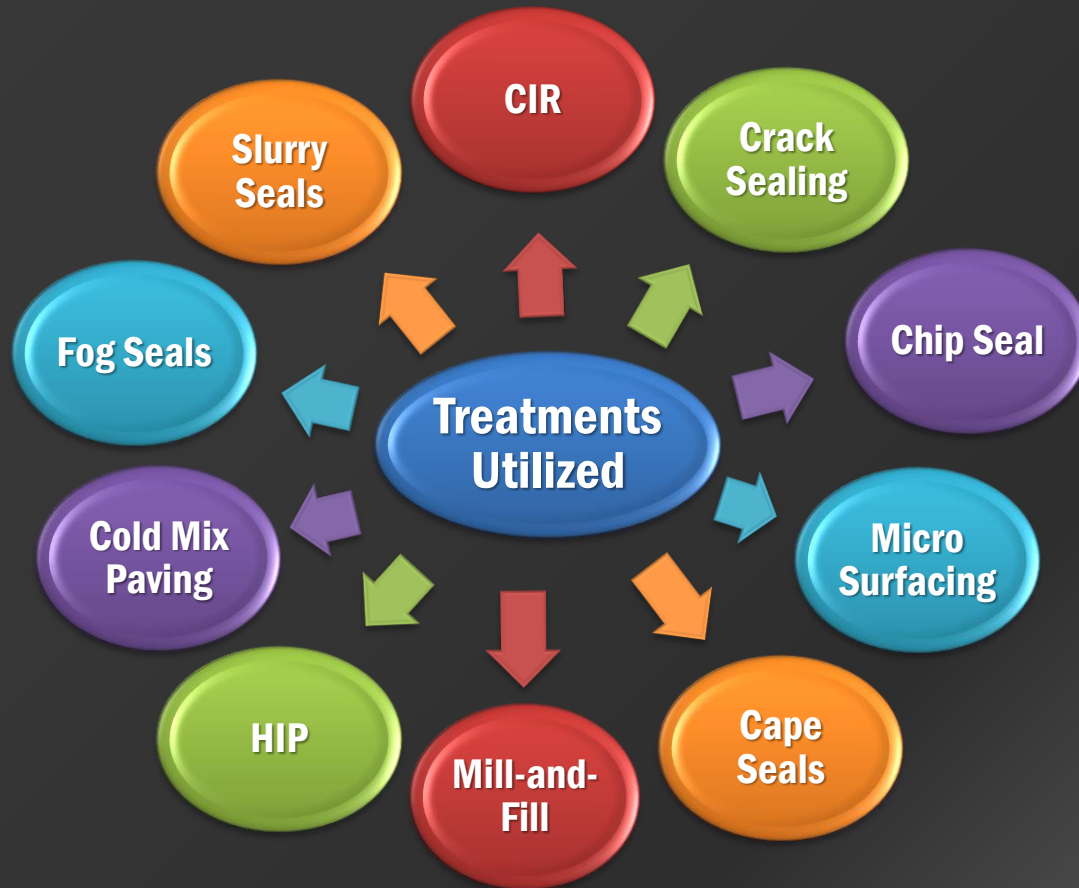
Fearless Innovators

Fairfield “Test Track” 2016

Micro Surfacing Performance Additives Demonstration Project

Micro Surfacing Variations	Square Yards
HiMA micro surfacing	10,117
HiMA micro surfacing w/fibers	8,694
Conventional micro surfacing	6,456
Conventional micro surfacing w/fibers	5,663
Total	30,930





Crack Sealing:

- PG + fibers
- PCRM + fibers

Chip Seal:

- 3 aggregate types
- 3 different emulsions

Micro Surfacing:

- 4 mix compositions

Cape Seal:

- 9 variations over the last 10 years

Why Is Fairfield a Winner?

**Committed to
Pavement Preservation**

What is “Pavement Preservation”?

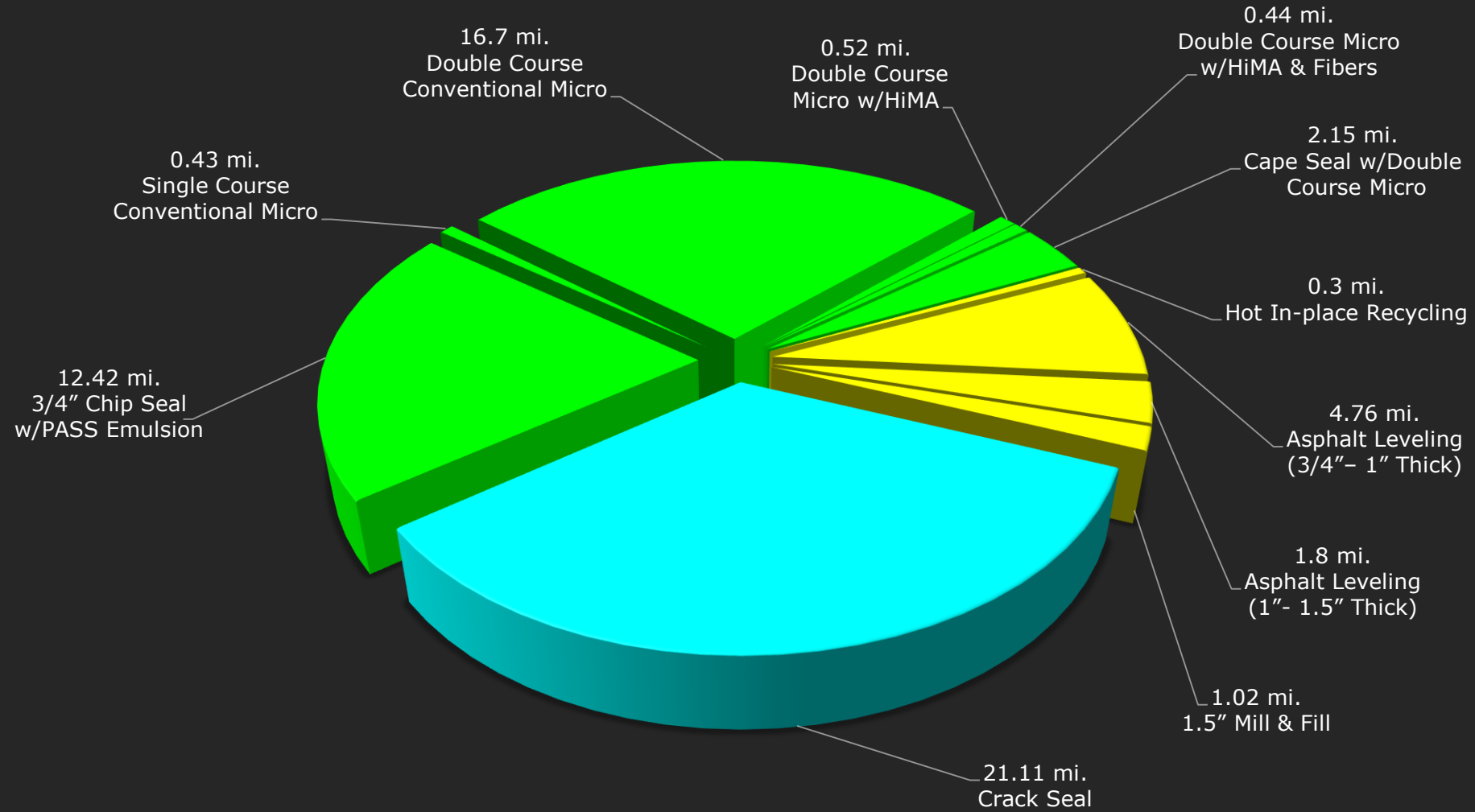


Preserve

pre·serve \ pri-'zərv \

1. to keep in good condition
2. to keep safe from harm
3. to prevent decay
4. maintain

2016 Treatment Miles by Category



21.11 miles crack seal



32.66 miles surface treatments



7.88 miles rehabilitation

54 of 62 Miles Treated = Preservation Treatments!

Why Is Fairfield a Winner?

**Outstanding
Communicators**

Same Old Agency Problems:

- 1. Not Enough \$**
- 2. Pressure to do Worst-First**

Preservation or Worst-First?



When are you
going to pave
my road!?





40 Town Meeting
Representatives



9 Board of Finance
Members



70 Staff Members



3 Board of Selectmen

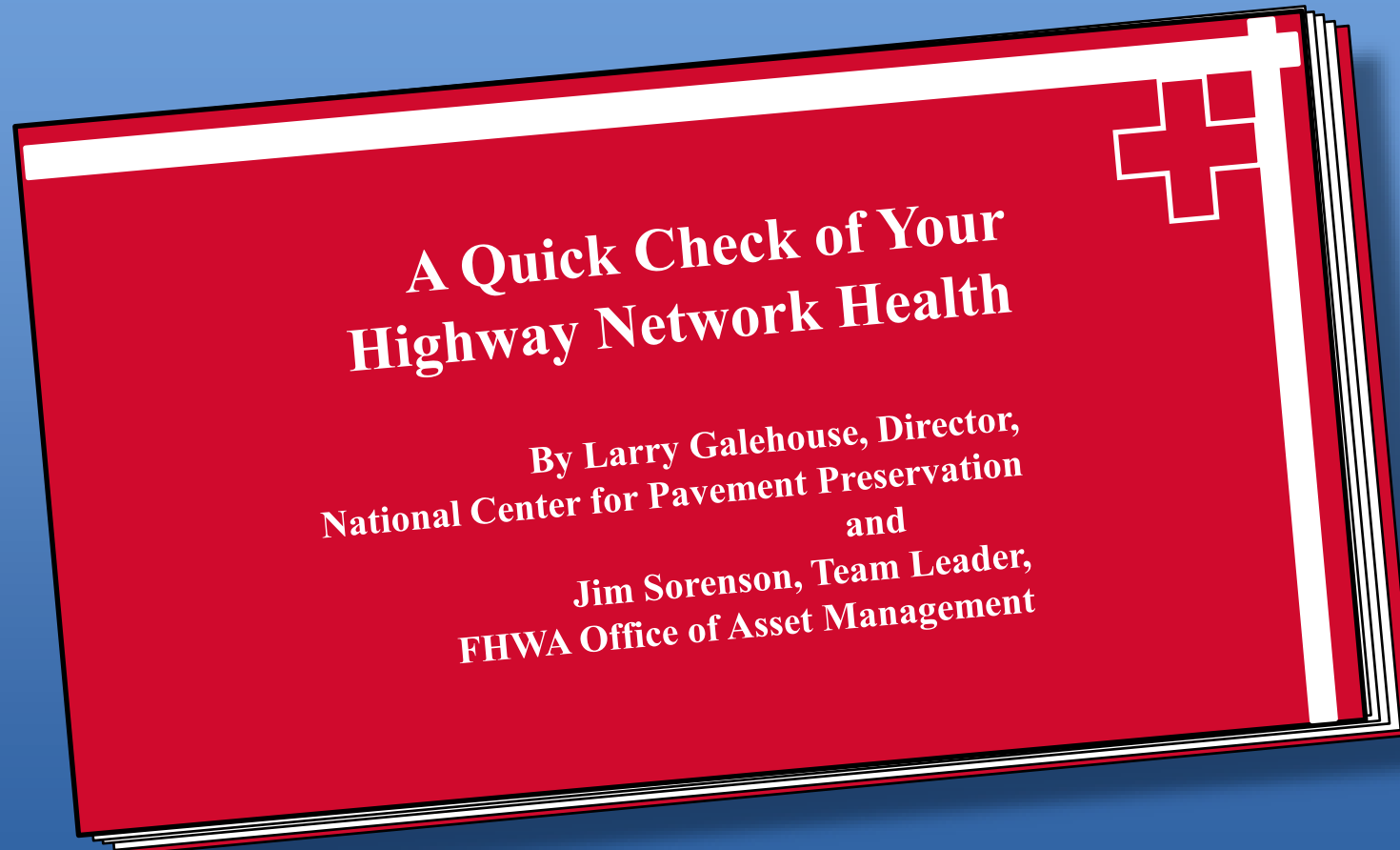


60,000 Residents

Why Is Fairfield a Winner?

**Astute Asset
Managers**

Remaining Service Life (RSL) Concept



Available at:

http://www.fhwa.dot.gov/pavement/pub_details.cfm?id=478

Remaining Service Life (RSL) Concept

- Every road segment has some Remaining Service Life
- 100 mile network with NO repairs or maintenance in a given year will lose 100 mile-years of the network's Remaining Service Life
- To “break even”, the annual work program needs to inject 100 mile-years of New Service Life

Simple Math

For Each Treatment:

$$\text{Miles} \times \text{Service Life} = \text{Mile-Years}$$

2016 Pavement Management Program

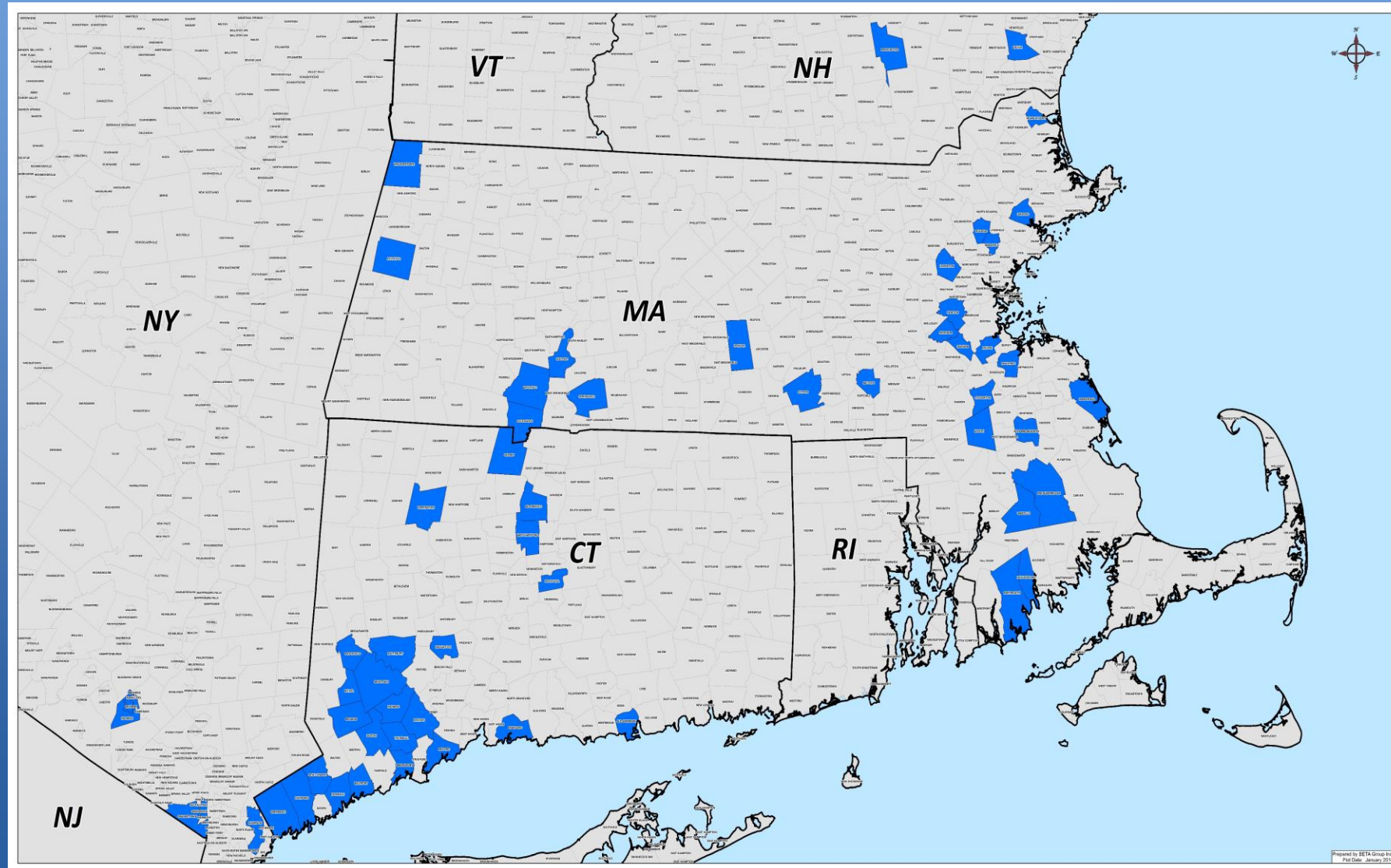
Analysis of Network Life Extension

Treatment Type	2016 Miles Completed	Est. Life Extension	New Mile-Years Added to Network
Crack Sealing	21.11	2	42.22
3/8" Chip Seal with PASS Emulsion	12.42	6	74.52
Single Course Conventional Micro Surfacing	0.43	4	1.72
Double Course Conventional Micro Surfacing	16.70	7	116.90
Double Course Micro w/HiMA Emulsion	0.52	9	4.68
Double Course Micro w/HiMA Emulsion & Fibers	0.44	10	4.40
Cape Seal w/Double Course Micro Surfacing	2.15	9	19.35
Hot In-Place Recycling	0.30	7	2.10
Asphalt Leveling (3/4" to 1" thick)	4.76	6	28.56
Asphalt Leveling (1" to 1.5" thick)	1.80	8	14.40
1.5" Mill & Fill	1.02	10	10.20
TOTALS = 61.65			319.05
Lost Annually			(288.30)
2016 Surplus/(Deficit)			30.75

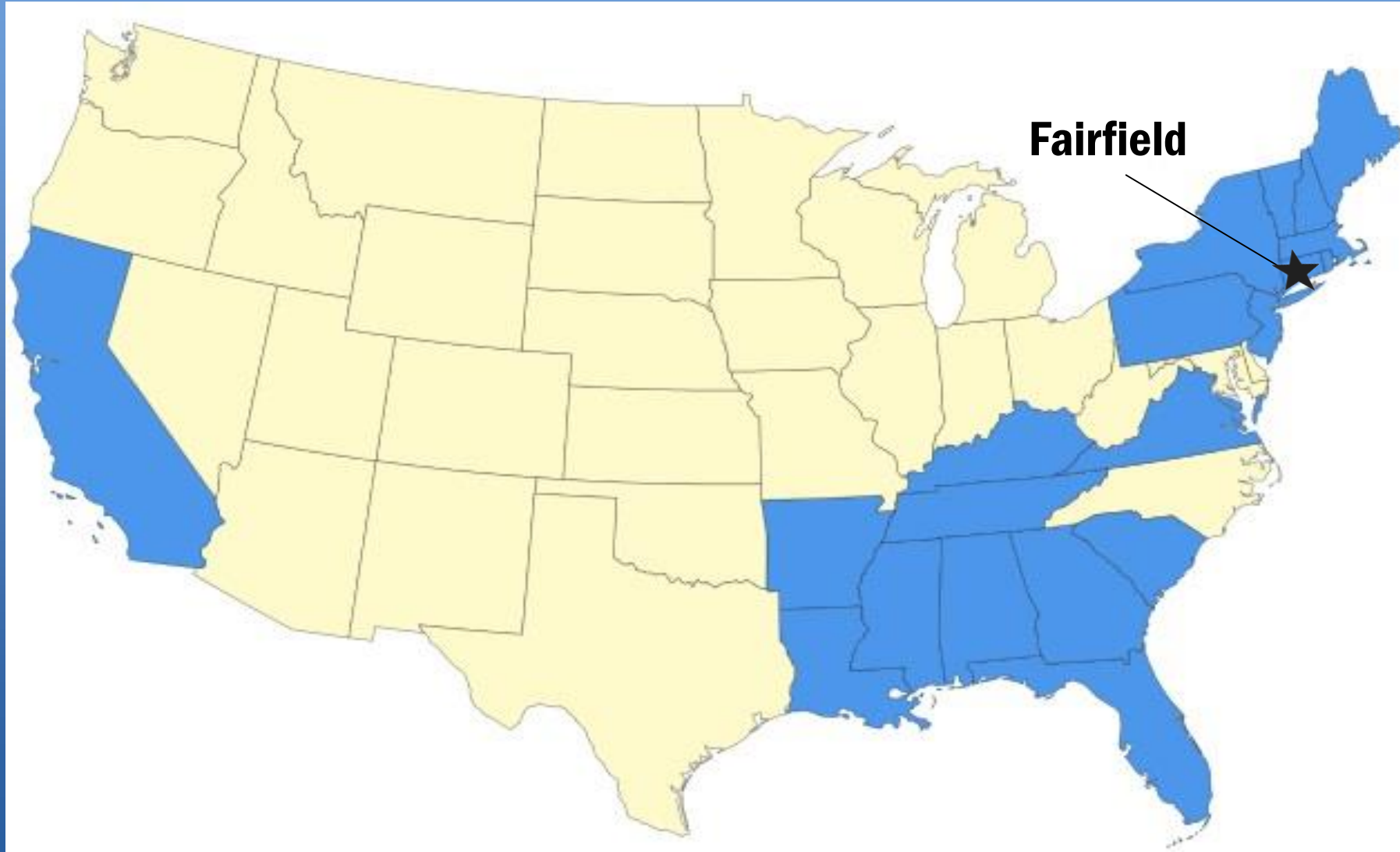
Why Is Fairfield a Winner?

**Regional
Leaders**

Fairfield's Regional Influence



Visits to Fairfield by State



Why Pavement Preservation?

Park Avenue
September 22, 2016

Neighbor in CT

2004: 2" Mill & Fill

Fairfield, CT

2004: 2" Mill & Fill

2010: Crack Sealing &
Micro Surfacing





Scott Bartlett

(203) 256-3176

sbartlett@fairfieldct.org

Superintendent, DPW

Fairfield, CT

Dan Patenaude, P.E.

(781) 428-3400

dpatenaude@sealcoatinginc.com

Sealcoating, Inc.

825 Granite Street

Braintree, MA 02184

www.sealcoatinginc.com

THANK YOU

