

Bridge Preservation Performance



Aran Lessard, PE
Florida's Turnpike Enterprise

Bridge Performance

- Introduction
- Performance-Based Bridge Preservation
- Preservation Strategy
- Performance Objectives
- Summary



Introduction

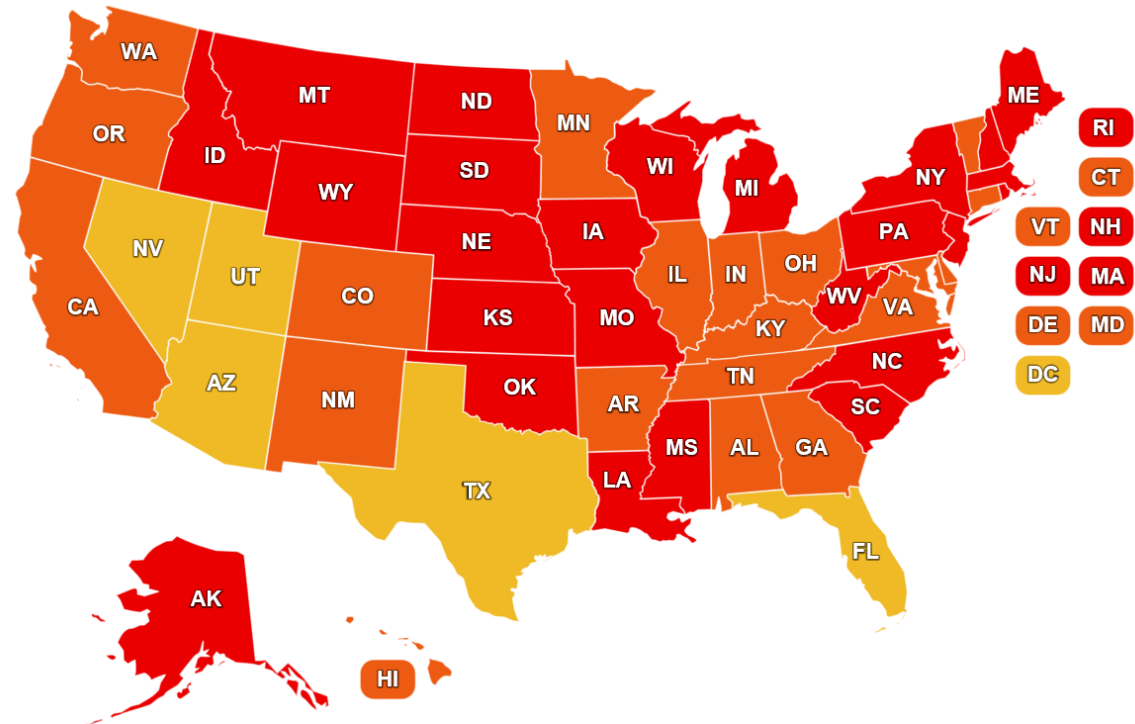
- “There are 174 million daily crossings on 54,259 Structurally Deficient (SD) U.S. bridges”

- (American Road & Transportation Builders Association)

- “... America’s Infrastructure Scores a D+...”

- (American Society of Civil Engineers)

- U.S. – 9.1% SD



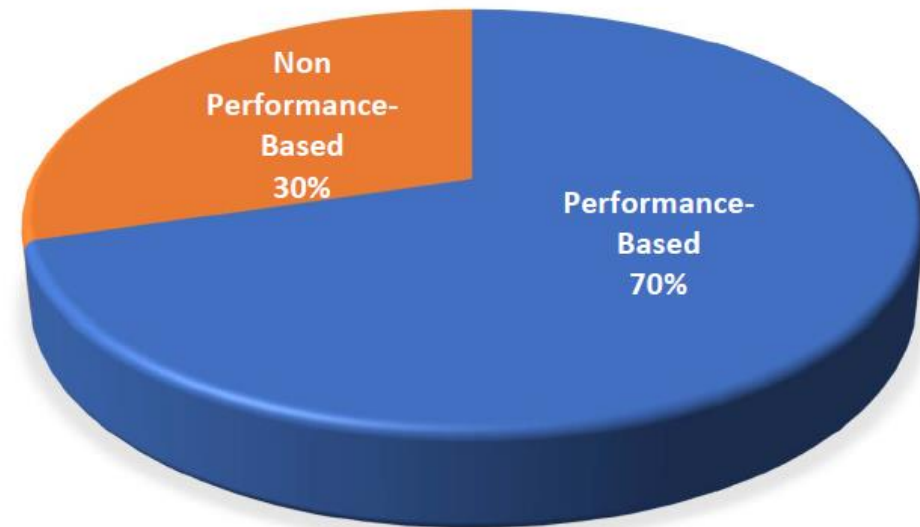
Florida Bridge Preservation

- Performance-Based bridge preservation



	<u>State Bridges</u>	<u>%</u>
Performance-Based	4917	70%
Non Performance-Based	2076	30%
Total	6993	100%

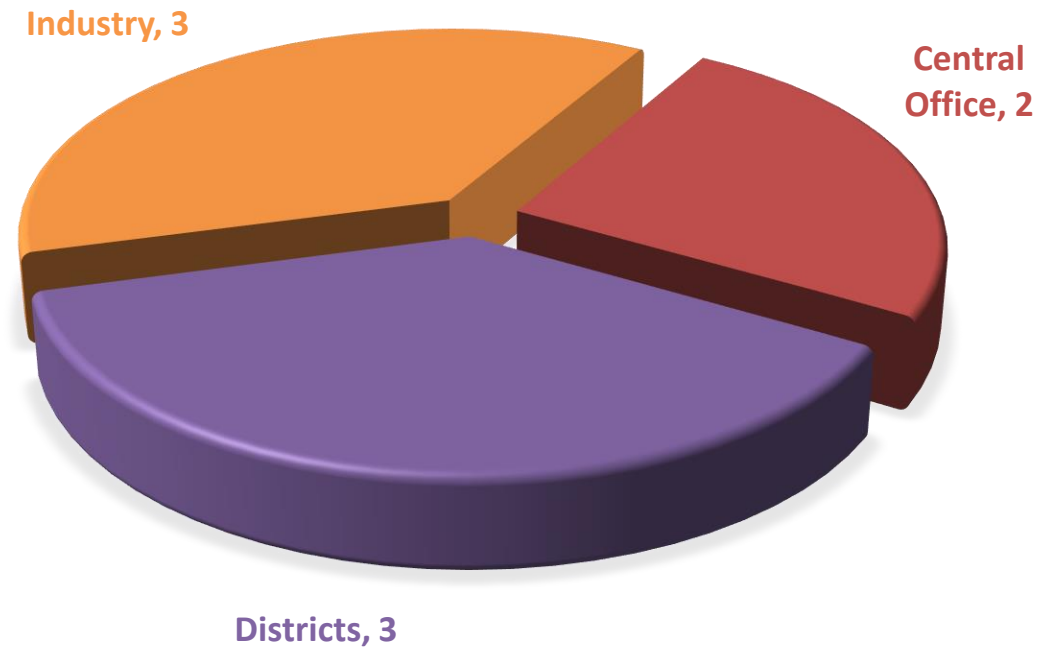
STATE BRIDGES



Florida Bridge Preservation

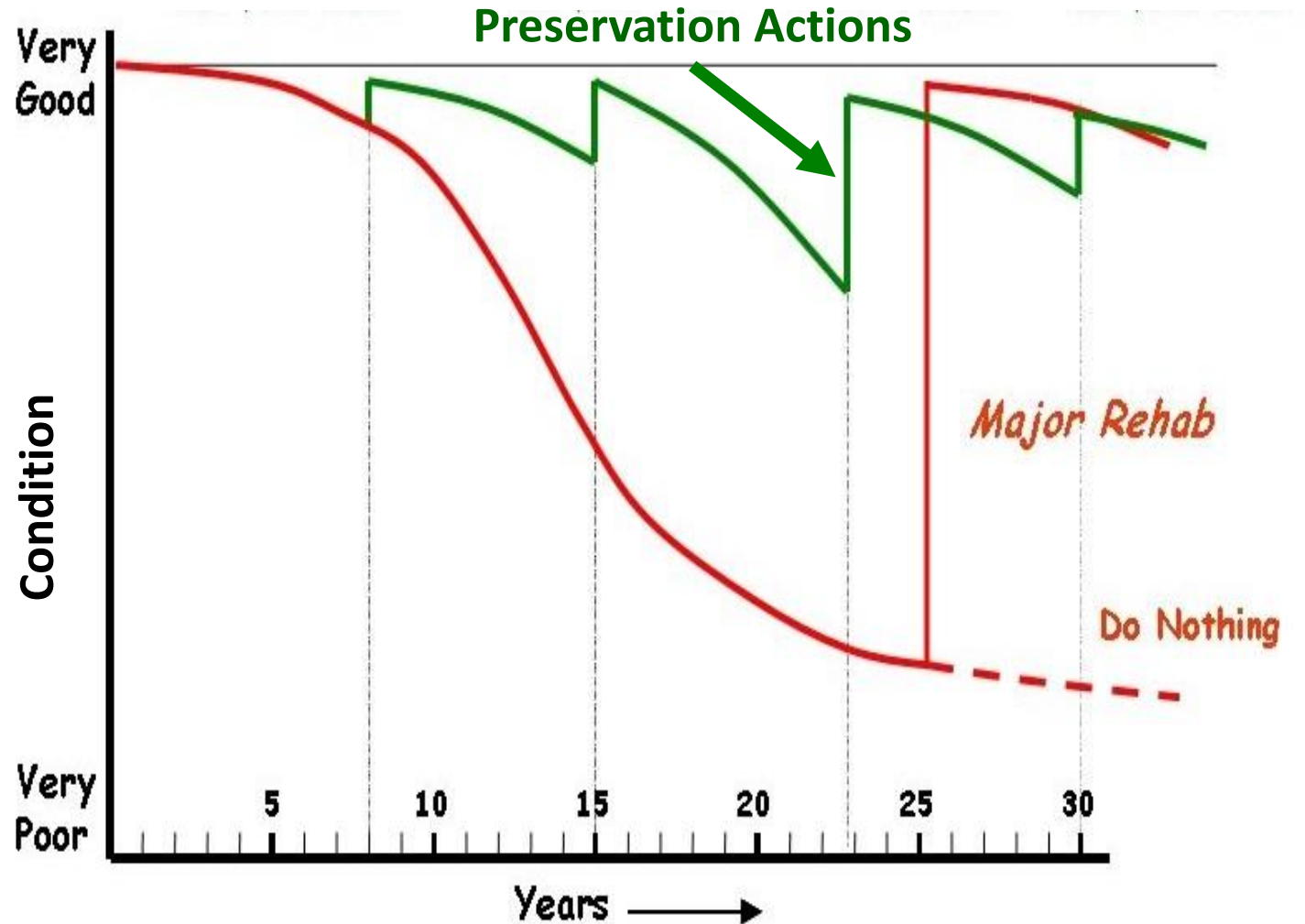
- Representation from CO/Districts/Industry
- Review, research, analyze, and discuss items related to Performance-Based contracting as it relates to bridge performance and condition.
- Provide recommendations for improvement or change

BRIDGE PERFORMANCE GROUP



Preservation Strategy

- Do the **Right Things** at the **Right Time**
- Consistently
- Effectively
- Entire Life cycle



Preservation Strategy

Protective Systems:

- Seals (Exp. Joints, etc)
- Coatings
- Wearing Surface
- Bridge Deck
- Others...



Preservation Strategy

Bridge Preservation Strategy:

- Ensure the *functionality of “Protection Elements”* over the long term...
- Ensure *Preservation of “Core/Structural” elements* throughout entire life of the bridge.

Bridge Inspection – Preservation Performance

Bridge Inspections:

- Report on Condition (1 to 4 Scale)
- Evaluate Effectiveness of Repairs

Performance Criteria:

- **Condition-Based / Outcome-Driven / Provides Value**
- Incentivize Performance
- Promote Innovation

Condition States			
1	2	3	4
GOOD	FAIR	POOR	SEVERE



Performance Objectives

Preservation Performance:

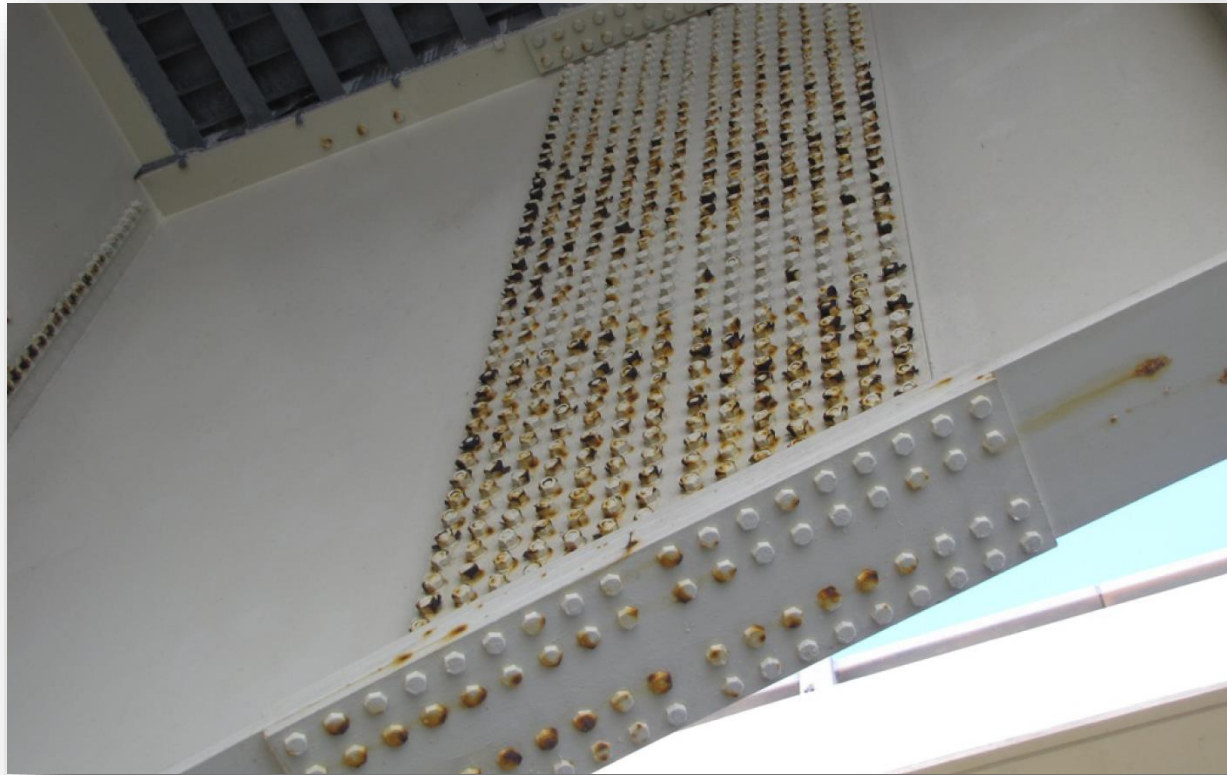
- **Minimize Leakage in Deck Joints:**



Performance Objectives

Preservation Performance:

- **Maximize Effectiveness of Coating Systems:**



Performance Objectives

- **Condition-Based** : Based on Element Condition Data

- Condition State Information

Condition States			
1	2	3	4
GOOD	FAIR	POOR	SEVERE

- Defect Criteria

Defect	Condition State 1	Condition State 2	Condition State 3	Condition State 4
	GOOD	FAIR	POOR	SEVERE
Leakage (2310)	None	Minimal, Minor dripping through the joint.	Moderate, More than a drip and less than free flow of water.	Free flow of water through the joint.
Seal Adhesion (2320)	Fully Adhered	Adhered for more than 50% of the joint height.	Adhered 50% or less of joint height but still adhesion.	Complete loss of adhesion.

Performance Objectives

- Bridge Condition Data:
 - Condition State Information – **Ensure Good Quantity**

Performance Objectives

At Least 95% of Deck Area in CS1:

D E C K	Defect	Condition State 1	Condition State 2	Condition State 3	Condition State 4	D E C K
		GOOD	FAIR	POOR	SEVERE	
	Delamination / Spall / Patched Area (1080)	None	Delaminated. Spall 1 in. or less deep or less than 6 in. diameter. Patched area that is sound.	Spall greater than 1 in. deep or greater than 6 in. diameter. Patched area that is unsound or showing distress. Does not warrant structural review.	The condition warrants a structural review to determine the effect on strength or serviceability of the element or bridge; OR a structural review has been completed and the defects impact strength or serviceability of the element or bridge.	
	Exposed Rebar (1090)	None	Present without measurable section loss.	Present with measurable section loss that does not warrant structural review.		
	Efflorescence / Rust Staining (1120)	None	Surface white without build-up or leaching without rust staining.	Heavy build-up with rust staining		
	Cracking (RC and Other) (1130)	Insignificant cracks or moderate width cracks that have been sealed	Unsealed moderate width cracks or unsealed moderate pattern or map cracking.	Wide cracks or heavy pattern or map cracking.		
	Abrasion / Wear (PSC / RC) (1190)	No abrasion or wearing.	Abrasion or wearing has exposed coarse aggregate but the aggregate remains secure in the concrete	Coarse aggregate is loose or has popped out of the concrete matrix due to abrasion or wear.		

Performance Objectives

At Least **95%** of Deck Area in CS1:



(Before Repair)



(After Repair)

- Outcome-Driven : Acknowledges Benefits of Repair Activity

Performance Objectives

At Least **95%** of Deck Area in CS1/CS2 :

D E C K	Defect	Condition State 1	Condition State 2	Condition State 3	Condition State 4	D E C K
		GOOD	FAIR	POOR	SEVERE	
	Delamination / Spall / Patched Area (1080)	None	Delaminated. Spall 1 in. or less deep or less than 6 in. diameter. Patched area that is sound.	Spall greater than 1 in. deep or greater than 6 in. diameter. Patched area that is unsound or showing distress. Does not warrant structural review.	The condition warrants a structural review to determine the effect on strength or serviceability of the element or bridge; OR a structural review has been completed and the defects impact strength or serviceability of the element or bridge.	
	Exposed Rebar (1090)	None	Present without measurable section loss.	Present with measurable section loss that does not warrant structural review.		
	Efflorescence / Rust Staining (1120)	None	Surface white without build-up or leaching without rust staining.	Heavy build-up with rust staining		
	Cracking (RC and Other) (1130)	Insignificant cracks or moderate width cracks that have been sealed	Unsealed moderate width cracks or unsealed moderate pattern or map cracking.	Wide cracks or heavy pattern or map cracking.		
	Abrasion / Wear (PSC / RC) (1190)	No abrasion or wearing.	Abrasion or wearing has exposed coarse aggregate but the aggregate remains secure in the concrete	Coarse aggregate is loose or has popped out of the concrete matrix due to abrasion or wear.		

Performance Objectives

At Least **95%** of Deck Area in CS1/CS2 :



Performance Objectives

- **Provides Value** : Preserve Bridge / Realize Asset Value Potential

- Condition State Criteria – **Ensure Good Quantity**

At Least 95% of Deck Area is in CS1/CS2...

- Defect Criteria – **Minimize Undesirable Defect Scenarios**

**... with Less than 1% of Area
including Cracking & Exposed Rebar**

Performance Objectives

Reinforced Concrete Deck & Slab Elements:

PM : **At least 95% of Deck Area is in CS1/CS2 with less than 1% of area including Exposed Rebar (1090) and Cracking (1130) defects.**

D E C K	Defect	Condition State 1	Condition State 2	Condition State 3	Condition State 4	D E C K
		GOOD	FAIR	POOR	SEVERE	
	Delamination / Spall / Patched Area (1080)	None	Delaminated. Spall 1 in. or less deep or less than 6 in. diameter. Patched area that is sound.	Spall greater than 1 in. deep or greater than 6 in. diameter. Patched area that is unsound or showing distress. Does not warrant structural review.	The condition warrants a structural review to determine the effect on strength or serviceability of the element or bridge; OR a structural review has been completed and the defects impact strength or serviceability of the element or bridge.	
	Exposed Rebar (1090)	None	Present without measurable section loss.	Present with measurable section loss that does not warrant structural review.		
	Efflorescence / Rust Staining (1120)	None	Surface white without build-up or leaching without rust staining.	Heavy build-up with rust staining		
	Cracking (RC and Other) (1130)	Insignificant cracks or moderate width cracks that have been sealed	Unsealed moderate width cracks or unsealed moderate pattern or map cracking.	Wide cracks or heavy pattern or map cracking.		
	Abrasion / Wear (PSC / RC) (1190)	No abrasion or wearing.	Abrasion or wearing has exposed coarse aggregate but the aggregate remains secure in the concrete	Coarse aggregate is loose or has popped out of the concrete matrix due to abrasion or wear.		

Performance Objectives

Bridge Deck:

Reinforced Concrete Deck & Slab Elements:

PM : At least 95% of Deck Area is in CS1/CS2 with less than 1% of area including Exposed Rebar (1090) and Cracking (1130) defects.

Prestressed Concrete Deck & Slab Elements:

PM : At least 95% of Deck Area is in CS1/CS2 with less than 1% of area including Exposed Rebar (1090), Exposed Prestressing (1100) and Cracking (1110) defects.

Steel Deck Elements:

PM : At least 95% of Deck Area is in CS1/CS2 with less than 1% of area including Corrosion (1000) and Connection (1020) defects.

Timber Deck & Slab Elements:

PM : At least 95% of Deck Area is in CS1/CS2 with less than 1% of area including Connection (1020) defects.

Other Material Deck & Slab Elements:

PM : At least 95% of Deck Area is in CS1/CS2 with less than 1% of area including Corrosion (1000), Connection (1020) or Cracking (1130) defects.

Performance Objectives

Deck Joints:

Deck Joint Elements (Steel Bridges):

PM : At least 95% of Deck Joint length is in CS1/CS2 with less than 1% of length including conditions allowing Leakage (multiple defect types)¹ and Metal Damage (2370) defects.

Deck Joint Elements (All Bridges):

PM : At least 90% of Deck Joint length is in CS1/CS2 with less than 5% of length including Metal Damage (2370) defects.

Steel Protective Coating Systems:

Steel Protective System Elements:

PM : At least 95% of steel protective system area is in CS1/CS2 with less than 1% of area including Peeling / Bubbling / Cracking (3420) and significant Effectiveness (3440)² defects.

Performance Objectives

District : 08 Bridge Group : Mult. Excl. Migr? N Data Date: 1/29/2018
Area : Mult.

Reinforced Concrete Deck & Slab Elements:

PM : At least **95%** of deck area is in CS1 or CS2 with less than **1%** of area including Exposed Rebar (1090) and Cracking (1130) defects.

Elements							Defects				
No.	Description	Quantity	CS1	CS2	CS3	CS4	1080	1090	1120	1130	1190
			Good	Good/Fair	Poor	Severe	Spall / Ptch	Exp. Rebar	Effl / Rust	Cracking	Abrasion
13	Pre Concrete Deck	-	-	-	-	-	-	-	-	-	-
15	Pre Concrete Top Flange	-	-	-	-	-	-	-	-	-	-
8097	PS Conc Slab (Hybrid)	-	-	-	-	-	-	-	-	-	-
8099	PS Conc Slab (Sonovoid)	178,644	153,610	24,444	590	-	804	-	-	306	212
Totals:		178,644	153,610	24,444	590	-	804	-	-	306	212
% of Total Quantity:			85.99%	13.68%	0.33%	0.00%	0.45%	0.00%	0.00%	0.17%	0.12%
CS1 + CS2 :			178,054		99.67%		1090 + 1130 :		62,801		0.70%

Prestressed Concrete Deck & Slab Elements:

PM : At least **95%** of deck area is in CS1 or CS2 with less than **1%** of area including Exp. Rebar (1090), Exp. Prestr (1100) and Crckng (1110) defects.

Elements							Defects				
No.	Description	Quantity	CS1	CS2	CS3	CS4	1080	1090	1100	1110	1120
			Good	Good/Fair	Poor	Severe	Spall / Ptch	Exp. Rebar	Exp. Prestr.	Cracking	Effl / Rust
13	Pre Concrete Deck	-	-	-	-	-	-	-	-	-	-
15	Pre Concrete Top Flange	-	-	-	-	-	-	-	-	-	-
8097	PS Conc Slab (Hybrid)	-	-	-	-	-	-	-	-	-	-
8099	PS Conc Slab (Sonovoid)	178,644	153,610	24,444	590	-	804	-	-	306	212
Totals:		178,644	153,610	24,444	590	-	804	-	-	306	212
% of Total Quantity:			85.99%	13.68%	0.33%	0.00%	0.45%	0.00%	0.00%	0.17%	0.12%
CS1 + CS2 :			178,054		99.67%		1090 + 1100 + 1110 :		306		0.17%

Steel Deck Elements:

PM : At least **95%** of deck area is in CS1 or CS2 with less than **1%** of area including Corrosion (1000) and Connection (1020) defects.

Elements							Defects					
No.	Description	Quantity	CS1	CS2	CS3	CS4				1000	1010	1020
			Good	Good/Fair	Poor	Severe				Corrosion	Cracking	Connections
28	Steel Deck - Open Grid	-	-	-	-	-				-	-	-
29	Steel Deck - Conc Fill Grid	-	-	-	-	-				-	-	-
30	Steel Deck - Orthotropic	-	-	-	-	-				-	-	-
Totals:		-	-	-	-	-				-	-	-
% of Total Quantity:			#DIV/0!	#DIV/0!	#DIV/0!	#DIV/0!				#DIV/0!	#DIV/0!	#DIV/0!
CS1 + CS2 :			-	#DIV/0!					1000 + 1020 :	-	#DIV/0!	

Performance Objectives

District : 08 Bridge Group : Mult. Excl. Migr? N Data Date: 1/29/2018

Area : Mult.

Reinforced
Concrete

Reinforced Concrete Deck & Slab Elements:

PM : At least **95%** of deck area is in CS1 or CS2 with less than **1%** of area including Exposed Rebar (1090) and Cracking (1130) defects.

Elements							Defects					
No.	Description	Quantity	CS1	CS2	CS3	CS4	1080	1090	1120	1130	1190	
			Good	Good/Fair	Poor	Severe	Spall / Ptch	Exp. Rebar	Effl / Rust	Cracking	Abrasion	
12	Re Concrete Deck	8,608,757	8,454,888	134,196	19,673	-	2,054	28	4,975	59,809	67,074	
16	Re Conc Top Flange	17,068	17,068	-	-	-	-	-	-	-	-	
38	Re Concrete Slab	225,400	218,836	6,541	23	-	29	-	632	2,644	400	
8098	Conc Deck on PC Panel	63,196	62,719	471	6	-	7	-	-	320	150	
Totals:		8,914,421	8,753,512	141,208	19,702	-	2,090	28	5,607	62,773	67,624	
% of Total Quantity:			98.19%	1.58%	0.22%	0.00%	0.02%	0.00%	0.06%	0.70%	0.76%	
CS1 + CS2 :			8,894,719	99.78%				1090 + 1130 :	62,801	0.70%		

Prestressed
Concrete

Prestressed Concrete Deck & Slab Elements:

PM : At least **95%** of deck area is in CS1 or CS2 with less than **1%** of area including Exp. Rebar (1090), Exp. Prestr (1100) and Crckng (1110) defects.

Elements							Defects					
No.	Description	Quantity	CS1	CS2	CS3	CS4	1080	1090	1100	1110	1120	1190
			Good	Good/Fair	Poor	Severe	Spall / Ptch	Exp. Rebar	Exp. Prestr.	Cracking	Effl / Rust	Abrasion
13	Pre Concrete Deck	-	-	-	-	-	-	-	-	-	-	-
15	Pre Concrete Top Flange	-	-	-	-	-	-	-	-	-	-	-
8097	PS Conc Slab (Hybrid)	-	-	-	-	-	-	-	-	-	-	-
8099	PS Conc Slab (Sonovoid)	178,644	153,610	24,444	590	-	804	-	-	306	212	1,920
Totals:		178,644	153,610	24,444	590	-	804	-	-	306	212	1,920
% of Total Quantity:			85.99%	13.68%	0.33%	0.00%	0.45%	0.00%	0.00%	0.17%	0.12%	1.07%
CS1 + CS2 :			178,054	99.67%				1090 + 1100 + 1110 :	306	0.17%		

Steel

Steel Deck Elements:

PM : At least **95%** of deck area is in CS1 or CS2 with less than **1%** of area including Corrosion (1000) and Connection (1020) defects.

Elements							Defects					
No.	Description	Quantity	CS1	CS2	CS3	CS4				1000	1010	1020
			Good	Good/Fair	Poor	Severe				Corrosion	Cracking	Connections
28	Steel Deck - Open Grid	-	-	-	-	-				-	-	-
29	Steel Deck - Conc Fill Grid	-	-	-	-	-				-	-	-
30	Steel Deck - Orthotropic	-	-	-	-	-				-	-	-
Totals:		-	-	-	-	-				-	-	-
% of Total Quantity:			#DIV/0!	#DIV/0!	#DIV/0!	#DIV/0!				#DIV/0!	#DIV/0!	#DIV/0!
CS1 + CS2 :			-	#DIV/0!				1000 + 1020 :	-	#DIV/0!		

Timber



Performance Objectives

District : 08

Bridge Group : Mult.

Excl. Migr? N

Data Date: 1/29/2018

Area : Mult

Reinforced Concrete Deck & Slab Elements:

PM : At least **95%** of deck area is in CS1 or CS2 with less than **1%** of area including Exposed Rebar (1090) and Cracking (1130) defects.

Elements							Defects				
No.	Description	Quantity	CS1	CS2	CS3	CS4	1080	1090	1120	1130	1190
			Good	Good/Fair	Poor	Severe	Spall / Ptch	Exp. Rebar	Effl / Rust	Cracking	Abrasion
12	Re Concrete Deck	8,608,757	8,454,888	134,196	19,673	-	2,054	28	4,975	59,809	67,074
16	Re Conc Top Flange	17,068	17,068	-	-	-	-	-	-	-	-
38	Re Concrete Slab	225,400	218,836	6,541	23	-	29	-	632	2,644	400
8098	Conc Deck on PC Panel	63,196	62,719	471	6	-	7	-	-	320	150
Totals:		8,914,421	8,753,512	141,208	19,702	-	2,090	28	5,607	62,773	67,624
% of Total Quantity:			98.19%	1.58%	0.22%	0.00%	0.02%	0.00%	0.06%	0.70%	0.76%
CS1 + CS2 :			8,894,719	99.78%							
						1090 + 1130 :			62,801	0.70%	

Prestressed Concrete Deck & Slab Elements:

Reinforced Concrete Deck & Slab Elements:

PM : At least **95%** of deck area is in CS1 or CS2 with less than **1%** of area including Exp. Rebar (1100) and Cracking (1110) defects.

Elements							Defects		
No.	Description	Quantity	CS1	CS2	CS3	CS4	1110	1120	1190
			Good	Good/Fair	Poor	Severe	Cracking	Effl / Rust	Abrasion
12	Re Concrete Deck	8,608,757	8,454,888	134,196	19,673	-	-	-	-
16	Re Conc Top Flange	17,068	17,068	-	-	-	-	-	-
38	Re Concrete Slab	225,400	218,836	6,541	23	-	-	-	-
8098	Conc Deck on PC Panel	63,196	62,719	471	6	-	306	212	1,920
Totals:		8,914,421	8,753,512	141,208	19,702	-	306	212	1,920
% of Total Quantity:			98.19%	1.58%	0.22%	0.00%	0.17%	0.12%	1.07%
CS1 + CS2 :			8,894,719	99.78%					
						10 : 306			0.17%

of area including Corrosion (1000) and Cracking (1010) defects.

Defects		
1000	1010	1020
Corrosion	Cracking	Connections
-	-	-
-	-	-
-	-	-
-	-	-
#DIV/0!	#DIV/0!	#DIV/0!
1000 + 1020 :		
-	#DIV/0!	

Performance Objectives

District : 08 Bridge Group : Mult. Excl. Migr? N Data Date : 1/29/2018
Area : Mult.

General Condition Information :

	(FDOT)			(FHWA)		
	Min. NBI	# Brdgs	%	Min. NBI	# Brdgs	Deck Area: %
Excellent	8 to 9	60	9%			
Good	6 to 7	629	91%	7 to 9	575	7,460,279 80%
Fair	5	5	1%	5 to 6	119	1,831,320 20%
Poor	4 or less	0	0%	4 or less	0	- 0%
	99% Good / Excellent			80% Good 0% Poor		

-- ALL BRIDGES --

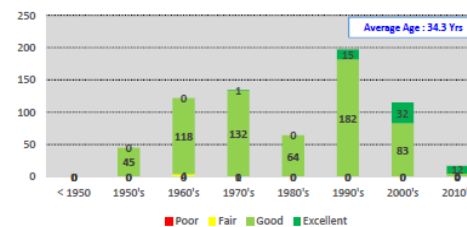
- Bridges in Selection:
Bridges : 694 (100%)
Dk Area : 9,291,599 (100%)
- SD / FO Bridge Counts:
SD Brdgs: 0 (0%)
FO Brdgs: 71 (10%)

Element Condition Information :

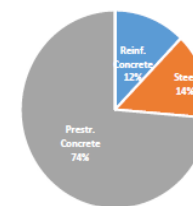
Component	Condition State Criteria			Defect Criteria			Goal Achieved?
	Begin	Current	Goal	Begin	Current	Goal	
		1/29/2018			1/29/2018		
Deck - R/C		99.78%	95%		0.70%	1%	Y
Deck - P/S		99.67%	95%		0.17%	1%	Y
Deck - Steel		N/A	95%		N/A	1%	N/A
Deck - Timber		N/A	95%		N/A	1%	N/A
Deck - Other		N/A	95%		N/A	1%	N/A
Joints (Steel)		97.55%	95%		0.27%	1%	Y
Joints (All)		97.89%	90%		0.01%	5%	Y
Steel Coatings		99.87%	95%		0.13%	1%	Y
(Other)							
(Other)							

Bridge Group Details :

Condition by Decade of Construction (FDOT)



Material Type



Slab	64	(9%)	Suspension	0	(0%)
Beam / Girder	565	(81%)	Cable-Stayed	0	(0%)
Box Bm	6	(1%)	Movable	0	(0%)
Frame / Ortho	0	(0%)	Tunnel	0	(0%)
Truss	0	(0%)	Culvert	59	(9%)
Arch	0	(0%)	Sgmntal Box	0	(0%)

Performance Exemptions :

Deck	8
Joints (Stl)	8
Joints (All)	8
Coatings	9
Other	8

Performance Objectives

District : 08 Bridge Group : Mult. Excl. Migr? N Data Date : 1/29/2018
Area : Mult.

General Condition Information :

(FDOT)				(FHWA)			
	Min. NBI	# Brdgs	%	Min. NBI	# Brdgs	Deck Area:	%
Excellent	8 to 9	60	9%	7 to 9	575	7,460,279	80%
Good	6 to 7	629	91%	5 to 6	119	1,831,320	20%
Fair	5	5	1%	4 or less	0	-	0%
Poor	4 or less	0	0%				

-- ALL BRIDGES --

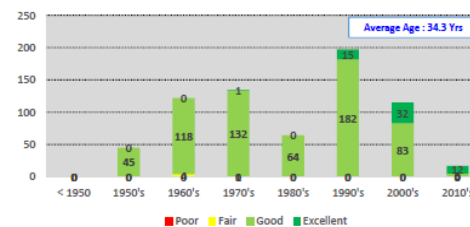
- Bridges in Selection:
Bridges : 694 (100%)
Dk Area : 9,291,599 (100%)
- SD / FO Bridge Counts:
SD Brdgs: 0 (0%)
FO Brdgs: 71 (10%)

District : 08 Bridge Group : Mult.
Area : Mult.

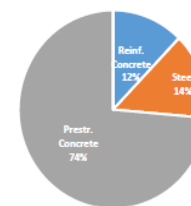
a :	Mult.			a)	Defect Criteria			Goal Achieved
					Begin	Current	Goal	
						1/29/2018		
	Deck - R/C	99.78%	95%		0.70%	1%		Y
	Deck - P/S	99.67%	95%		0.17%	1%		Y
	Deck - Steel	N/A	95%		N/A	1%		N/A
	Deck - Timber	N/A	95%		N/A	1%		N/A
	Deck - Other	N/A	95%		N/A	1%		N/A
	Joints (Steel)	97.55%	95%		0.27%	1%		Y
	Joints (All)	97.89%	90%		0.01%	5%		Y
	Steel Coatings	99.87%	95%		0.13%	1%		Y
	(Other)							
	(Other)							

Bridge Group Details :

Condition by Decade of Construction (FDOT)



Material Type



Slab	64	(9%)	Suspension	0	(0%)
Beam / Girder	565	(81%)	Cable-Stayed	0	(0%)
Box Bm	6	(1%)	Movable	0	(0%)
Frame / Ortho	0	(0%)	Tunnel	0	(0%)
Truss	0	(0%)	Culvert	59	(9%)
Arch	0	(0%)	Sgmntal Box	0	(0%)

Performance Exemptions :

Deck	8
Joints (Stl)	8
Joints (All)	8
Coatings	9
Other	8

Performance Objectives

District : 08 Bridge Group : Mult. Excl. Migr? N Data Date : 1/29/2018
Area : Mult.

General Condition Information :

	(FDOT)			(FHWA)			
	Min. NBI	# Brdgs	%	Min. NBI	# Brdgs	Deck Area:	%
Excellent	8 to 9	60	9%				
Good	6 to 7	629	91%	7 to 9	575	7,460,279	80%
Fair	5	5	1%	5 to 6	119	1,831,320	20%
Poor	4 or less	0	0%	4 or less	0	-	0%
	99% Good / Excellent			80% Good 0% Poor			

-- ALL BRIDGES --

- Bridges in Selection:
Bridges : 694 (100%)
Dk Area : 9,291,599 (100%)
- SD / FO Bridge Counts:
SD Brdgs: 0 (0%)
FO Brdgs: 71 (10%)

Element Condition Information :

Component	Condition State Criteria			Defect Criteria			Goal Achieved?
	Begin	Current	Goal	Begin	Current	Goal	
		1/29/2018			1/29/2018		
Deck - R/C		99.78%	95%		0.70%	1%	Y
Deck - P/S		99.67%	95%		0.17%	1%	Y
Deck - Steel		N/A	95%		N/A	1%	N/A
Deck - Timber		N/A	95%		N/A	1%	N/A
Deck - Other		N/A	95%		N/A	1%	N/A
Joints (Steel)		97.55%	95%		0.27%	1%	Y

General Condition Information :

	(FDOT)			(FHWA)			
	Min. NBI	# Brdgs	%	Min. NBI	# Brdgs	Deck Area:	%
Excellent	8 to 9	60	9%				
Good	6 to 7	629	91%	7 to 9	575	7,460,279	80%
Fair	5	5	1%	5 to 6	119	1,831,320	20%
Poor	4 or less	0	0%	4 or less	0	-	0%
	99% Good / Excellent			80% Good 0% Poor			

-- ALL BRIDGES --

- Bridges in Selection:
Bridges : 694 (100%)
Dk Area : 9,291,599 (100%)
- SD / FO Bridge Counts:
SD Brdgs: 0 (0%)
FO Brdgs: 71 (10%)

■ Poor ■ Fair ■ Good ■ Excellent

Slab	64	(9%)	Suspension	0	(0%)
Beam / Girder	565	(81%)	Cable-Stayed	0	(0%)
Box Bm	6	(1%)	Movable	0	(0%)
Frame / Ortho	0	(0%)	Tunnel	0	(0%)
Truss	0	(0%)	Culvert	59	(9%)
Arch	0	(0%)	Sgmntal Box	0	(0%)

Performance Exemptions :

Deck	8
Joints (Stl)	8
Joints (All)	8
Coatings	9
Other	8

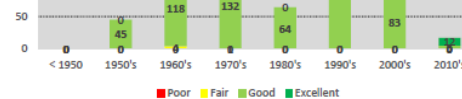
Performance Objectives

District : 08 Bridge Group : Mult. Excl. Migr? N Data Date : 1/29/2018
 Area : Mult.

General Condition Information : -- ALL BRIDGES --
 (FDOT) (FHWA) • Bridges in Selection:

Element Condition Information :

Component	Condition State Criteria			Defect Criteria			Goal Achieved?
	Begin	Current	Goal	Begin	Current	Goal	
		1/29/2018			1/29/2018		
Deck - R/C		99.78%	95%		0.70%	1%	Y
Deck - P/S		99.67%	95%		0.17%	1%	Y
Deck - Steel		N/A	95%		N/A	1%	N/A
Deck - Timber		N/A	95%		N/A	1%	N/A
Deck - Other		N/A	95%		N/A	1%	N/A
Joints (Steel)		97.55%	95%		0.27%	1%	Y
Joints (All)		97.89%	90%		0.01%	5%	Y
Steel Coatings		99.87%	95%		0.13%	1%	Y
(Other)							
(Other)							



Slab	64	(9%)	Suspension	0	(0%)
Beam / Girder	565	(81%)	Cable-Stayed	0	(0%)
Box Bm	6	(1%)	Movable	0	(0%)
Frame / Ortho	0	(0%)	Tunnel	0	(0%)
Truss	0	(0%)	Culvert	59	(9%)
Arch	0	(0%)	Sgmntal Box	0	(0%)

Performance Exemptions :

Deck	8
Joints (Stl)	8
Joints (All)	8
Coatings	9
Other	8

Performance Objectives

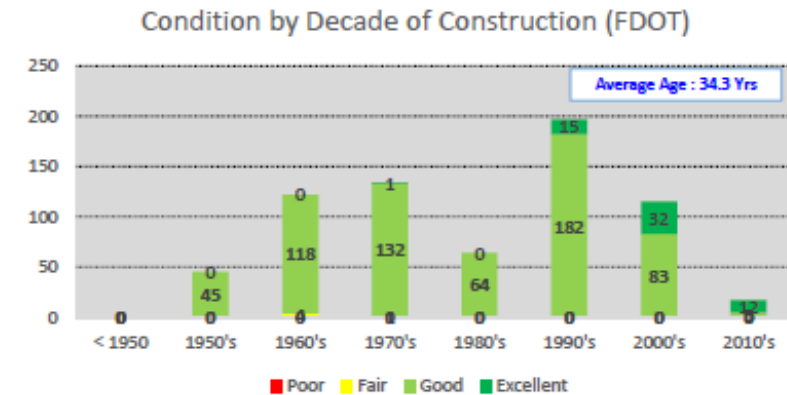
District : 08 Bridge Group : Mult. Excl. Migr? N Data Date : 1/29/2018
Area : Mult.

General Condition Information :

	(FDOT)	(FHWA)
Min. NBI	# Brgs	Deck Area: %
7 to 9	575	7,460,279 80%
5 to 6	119	1,831,320 20%
4 or less	0	- 0%
		80% Good 0% Poor

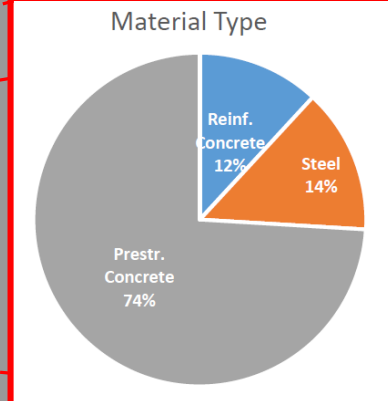
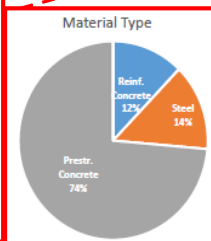
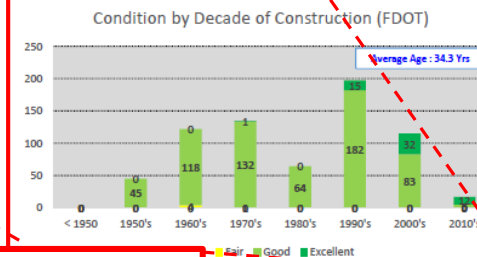
-- ALL BRIDGES --
• Bridges in Selection:
Bridges : 694 (100%)
Dk Area : 9,291,599 (100%)
• SD / FO Bridge Counts:
SD Brgs: 0 (0%)
FO Brgs: 71 (10%)

Bridge Group Details :



Criteria	Defect Criteria	Goal	Goal Achieved?
8	Begin	1/29/2018	
95%	0.70%	1%	Y
95%	0.17%	1%	Y
95%	N/A	1%	N/A
95%	N/A	1%	N/A
95%	N/A	1%	N/A
95%	0.27%	1%	Y
90%	0.01%	5%	Y
95%	0.13%	1%	Y

Bridge Group Details :



Slab	64	(9%)	Suspension	0	(0%)
Beam / Girder	565	(81%)	Cable-Stayed	0	(0%)
Box Bm	6	(1%)	Movable	0	(0%)
Frame / Ortho	0	(0%)	Tunnel	0	(0%)
Truss	0	(0%)	Culvert	59	(9%)
Arch	0	(0%)	Sgmntal Box	0	(0%)

9%	Suspension	0	(0%)
81%	Cable-Stayed	0	(0%)
1%	Movable	0	(0%)
0%	Tunnel	0	(0%)
0%	Culvert	59	(9%)
0%	Sgmntal Box	0	(0%)

Performance Exemptions :

Deck	8
Joints (Stl)	8
Joints (All)	8
Coatings	9
Other	8

Performance Objectives

District : 08 Bridge Group : Mult. Excl. Migr? N Data Date : 1/29/2018
Area : Mult.

General Condition Information :

	(FDOT)			(FHWA)		
	Min. NBI	# Brdgs	%	Min. NBI	# Brdgs	Deck Area: %
Excellent	8 to 9	60	9%	7 to 9	575	7,460,279 80%
Good	6 to 7	629	91%	5 to 6	119	1,831,320 20%
Fair	5	5	1%	4 or less	0	- 0%
Poor	4 or less	0	0%			

99% Good / Excellent 80% Good 0% Poor

-- ALL BRIDGES --

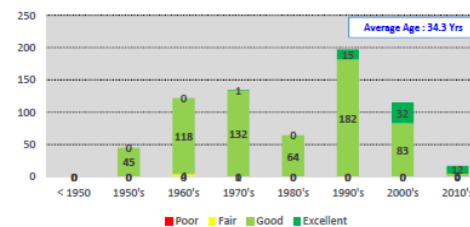
- Bridges in Selection:
Bridges : 694 (100%)
Dk Area : 9,291,599 (100%)
- SD / FO Bridge Counts:
SD Brdgs: 0 (0%)
FO Brdgs: 71 (10%)

Element Condition Information :

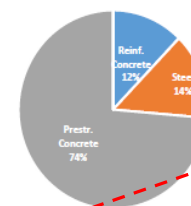
Component	Condition State Criteria			Defect Criteria			Goal Achieved?
	Begin	Current	Goal	Begin	Current	Goal	
		1/29/2018			1/29/2018		
Deck - R/C		99.78%	95%		0.70%	1%	Y
Deck - P/S		99.67%	95%		0.17%	1%	Y
Deck - Steel		N/A	95%		N/A	1%	N/A
Deck - Timber		N/A	95%		N/A	1%	N/A
Deck - Other		N/A	95%		N/A	1%	N/A
Joints (Steel)		97.55%	95%		0.27%	1%	Y
Joints (All)		97.89%	90%		0.01%	5%	Y
Steel Coatings		99.87%	95%		0.13%	1%	Y
(Other)							
(Other)							

Bridge Group Details :

Condition by Decade of Construction (FDOT)



Material Type



Slab	64	(9%)	Suspension	0	(0%)
Beam / Girder	565	(81%)	Cable-Stayed	0	(0%)
Box Bm	6	(1%)	Movable	0	(0%)
Frame / Ortho	0	(0%)	Tunnel	0	(0%)
Truss	0	(0%)	Culvert	59	(9%)
Arch	0	(0%)	Sgmntal Box	0	(0%)

Performance Exemptions :

Deck	8
Joints (Stl)	8
Joints (All)	8
Coatings	9
Other	8

Performance Exemptions :

Deck	8
Joints (Stl)	8
Joints (All)	8
Coatings	9
Other	8

Performance-Based Bridge Preservation

Condition-Based / Outcome-Driven / Provides Value

- Deck Systems
- Expansion Joints
- Steel Coatings
- Others...

Performance Measures...

- Incentivize Preservation Performance
- Competition Promotes Innovation



Bridge Preservation



Questions?

Aran Lessard, PE

Structures Maintenance Engineer

aran.lessard@dot.state.fl.us

(954) 934-1234