

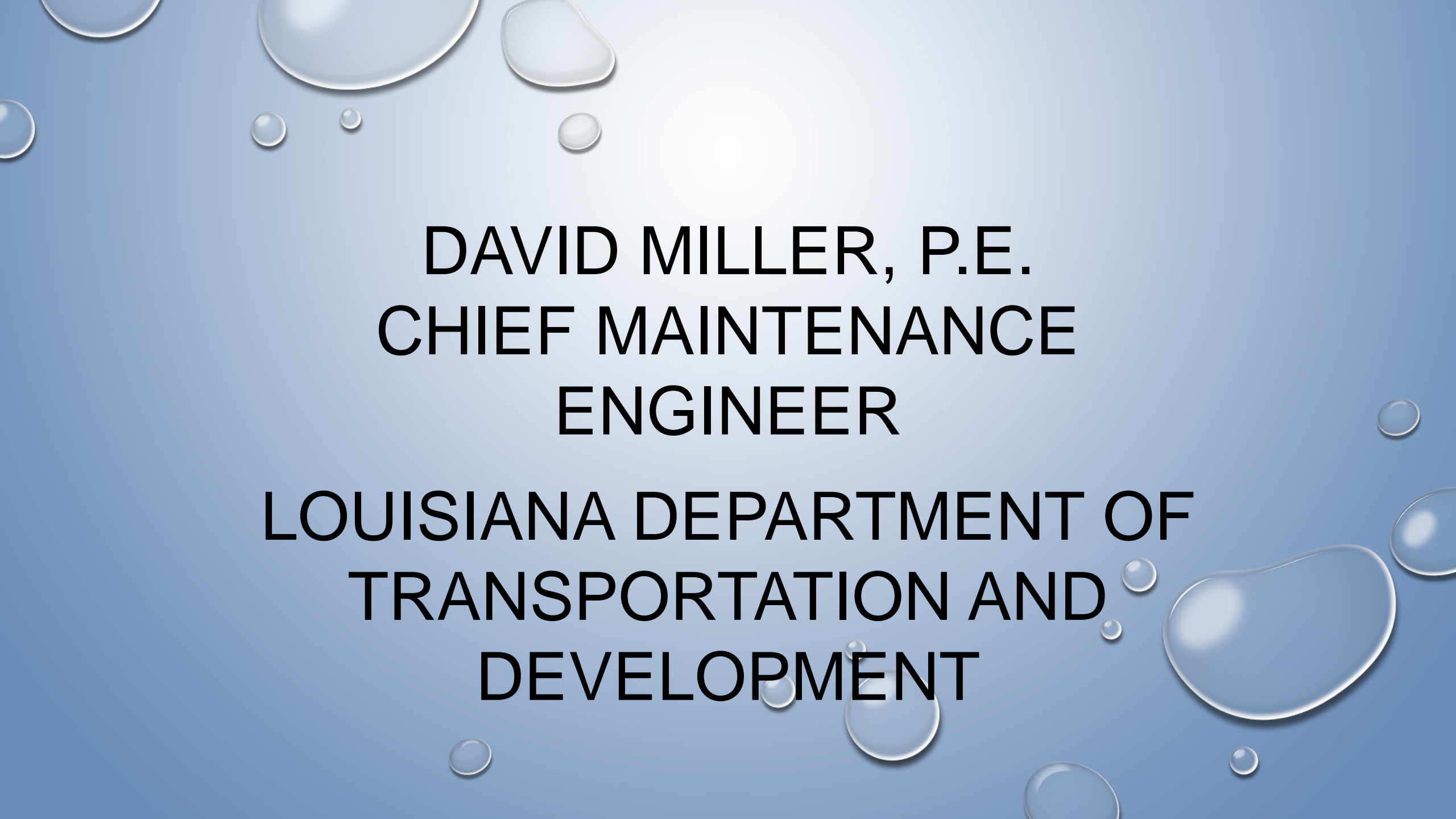
The background is a solid light blue color with several realistic water droplets of various sizes scattered across it. The droplets have highlights and shadows, giving them a three-dimensional appearance.

SOUTHEAST BRIDGE PRESERVATION PARTNERSHIP

LOUISIANA DEPARTMENT OF TRANSPORTATION AND DEVELOPMENT

CHARLESTON, WEST VIRGINIA

APRIL, 2017

The background is a light blue gradient with several realistic water droplets of various sizes scattered across it. The droplets have highlights and shadows, giving them a three-dimensional appearance.

**DAVID MILLER, P.E.
CHIEF MAINTENANCE
ENGINEER**

**LOUISIANA DEPARTMENT OF
TRANSPORTATION AND
DEVELOPMENT**

BEFORE WE GET STARTED

- STATE EMERGENCY OPERATIONS PLAN (EOP)
 - 14 EMERGENCY SUPPORT FUNCTIONS (ESF)
 - DOTD ASSIGNED TWO EMERGENCY SUPPORT FUNCTIONS

EMERGENCY SUPPORT FUNCTIONS (ESF)

- **ESF-1 TRANSPORTATION (EMERGENCY EVACUATION –PEOPLE)**
- ESF-2 COMMUNICATIONS
- **ESF-3 PUBLIC WORKS & ENGINEERING (DEBRIS, LEVEES, ROADWAY, BRIDGES, ENGINEERING)**
- ESF-4 FIREFIGHTING
- ESF-5 EMERGENCY MANAGEMENT
- ESF-6 MASS CARE, EMERGENCY ASSISTANCE, HOUSING & HUMAN SERVICES
- ESF-7 LOGISTICS, MANAGEMENT AND RESOURCE SUPPORT
- ESF-8 PUBLIC HEALTH AND EMERGENCY SERVICES
- ESF-9 SEARCH & RESCUE
- ESF-10 OIL SPILL, HAZARDOUS MATERIALS
- ESF-11 AGRICULTURE & NATURAL RESOURCES
- ESF-12 ENERGY
- ESF-13 PUBLIC SAFETY & SECURITY
- ESF-14 LONG-TERM COMMUNITY RECOVERY & MITIGATION
- ESF-15 EXTERNAL AFFAIRS
- ESF-16 MILITARY SUPPORT

ESF-1 TRANSPORTATION

- DOTD PROVIDES EVACUATION TRANSPORTATION FOR RESIDENTS AND VISITORS IN LOUISIANA DURING EMERGENCY SITUATIONS.
 - ASSIST WITH SEARCH & RESCUE
 - CITY, PARISH, REGIONAL EVACUATION OF INDIVIDUALS TO SHELTERS IN STATE AND OUT OF STATE
 - MOVEMENT OF EMERGENCY RESPONDERS
 - RETURN FROM SHELTERS TO HOME AREA

ESF-3 PUBLIC WORKS & ENGINEERING

- DEBRIS REMOVAL
- LEVEE SUPPORT
- ROADWAY MAINTENANCE
- BRIDGE INSPECTION AND MAINTENANCE
- FLOOD CONTROL (SAND AND SAND BAGS – AQUA DAM, ETC.)
- TRANSPORTATION OF “STUFF”
- INTERMODAL
- ENGINEERING

The background features a light gray gradient with several realistic water droplets of various sizes scattered in the corners. The droplets have highlights and shadows, giving them a three-dimensional appearance.

MARCH 2016 FLOOD EVENT LOUISIANA

MARCH 2016 FLOOD EVENT

- OVER 26 INCHES OF RAIN
- SABINE RIVER CRESTED NEARLY 6 FEET ABOVE THE ALL TIME HIGH RECORD
- TOLEDO BEND DAM WAS IN DANGER OF OVERTOPPING
- THREE INTERSTATE ROUTES CLOSED

BRIDGE FAILURE



FAST MOVING WATER AND WASHOUTS



THE SABINE RIVER PEAKED AT 6 FT ABOVE THE PREVIOUS RECORD



DEBRIS



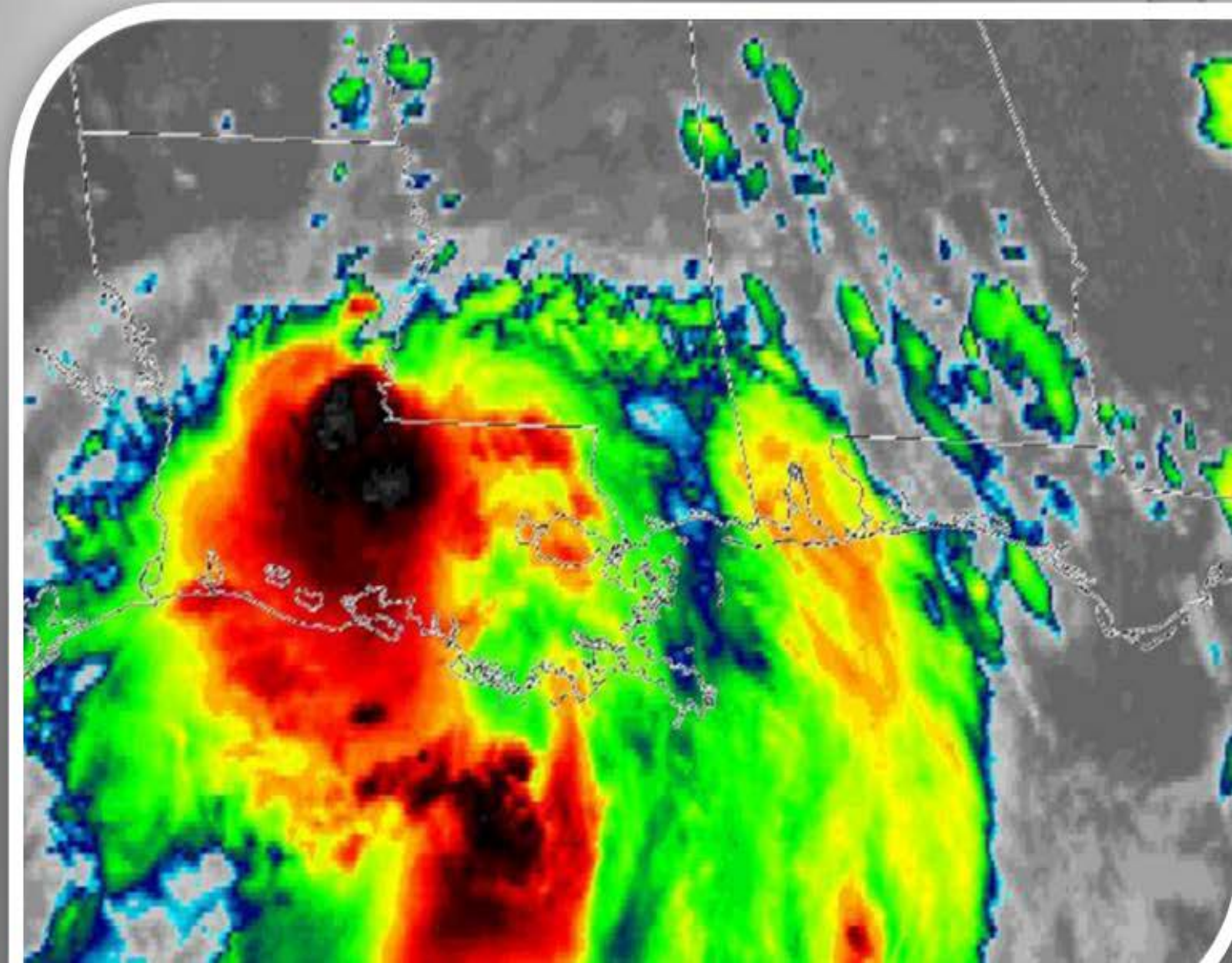
STREAM-BED PROFILE CHALLENGES



The background of the slide is a light gray gradient. It is decorated with several realistic water droplets of various sizes and shapes, scattered across the top and bottom edges. The droplets have highlights and shadows, giving them a three-dimensional appearance.

AUGUST 2016 FLOOD EVENT LOUISIANA

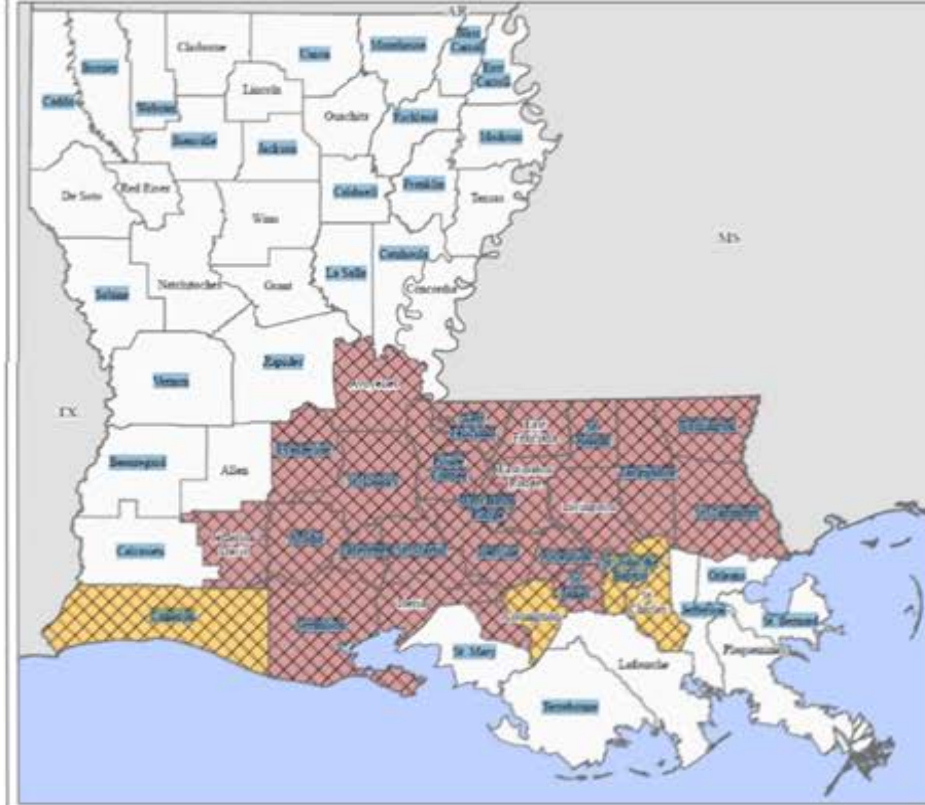
- The worst US Natural Disaster since Hurricane Sandy in 2012
- Over 146,000 homes damaged in LA
- FEMA has approved \$132M for assistance
- The rainfall began on August 11th
- Declared a 'Disaster' on August 14th
- By August 15, 2016, an estimated 7 trillion gallons of water had fallen
- Thousands of businesses damaged
- Rainfall exceeded 30 inches in multiple parishes
- Record breaking water levels in the Amite and Comite Rivers





- Approximately 265,000 children were out of school (nearly 30% of the school-aged population in Louisiana)
- Estimated 21 schools closed in only two parishes

FEMA-4277-DR, Louisiana Disaster Declaration as of 09/02/2016



Data Layer: Map Description:
The types of assistance that have been designated for selected areas in the State of Louisiana.

All designated areas in the State of Louisiana are eligible to apply for assistance under the Hazard Mitigation Grant Program.

Designated Counties:

- No Designation
- Individual Assistance and Public Assistance (Categories A - G)
- Public Assistance (Categories A - G)

Data Sources:
FEMA, ESRI
Initial Declaration: 08/14/2016
Disaster Federal Registry Notice: Amendment #5 - 09/02/2016
Datum: North American 1983
Projection: Lambert Conformal Conic

New Juban Crossing Development @ Interstate 12 in Denham Springs



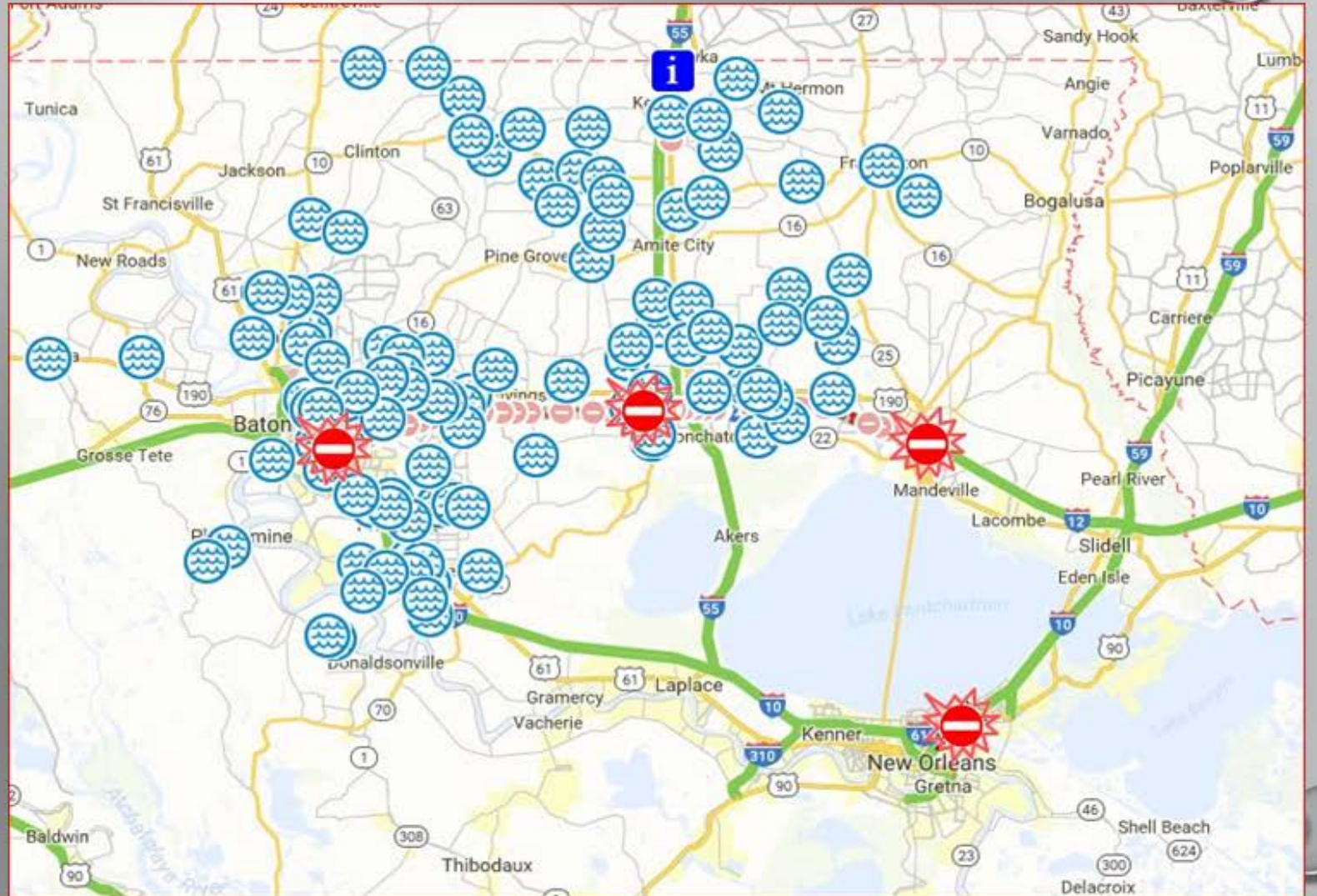
Interstate 12 WB – Denham Springs



- 4 Interstates closed
- Over 400 roads closed at the peak of the event
- \$22 million in damage to FHWA routes
- \$4.3 million in FEMA routes
- \$6 million in Debris
- \$10 million in the initial response

Interstate 12 WB – Denham Springs

- 120 bridges damaged
- 17 closed
- 4900 bridge inspections



DENHAM SPRINGS - BEFORE



Denham Springs, Louisiana | [Download](#)

DENHAM SPRINGS - AFTER



Denham Springs, Louisiana | [Download](#)

PORT VINCENT - BEFORE



PORT VINCENT - AFTER

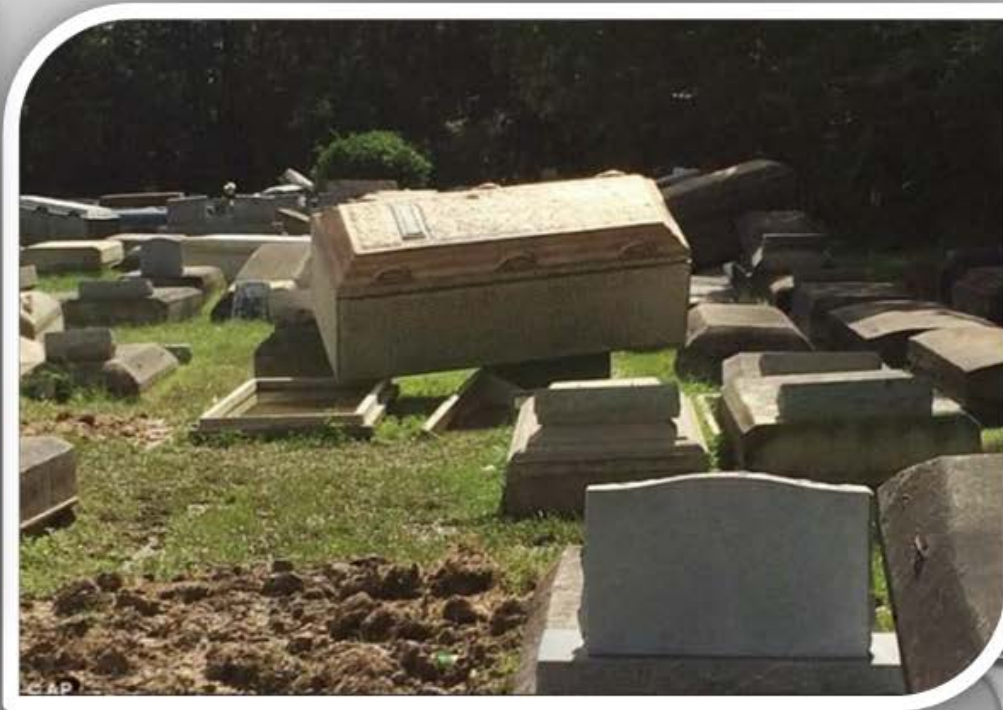


Port Vincent, Louisiana | [Download](#)

Interstate 12 WB Ramp @ Denham Springs



- 13 people confirmed dead
- Caskets floating out of the ground in multiple cemeteries



LA 10 in St. Helena Parish



U

Woman's Hospital at risk for flooding



Aqua Dam's deployed at Woman's Hospital



Aqua Dam's deployed at Woman's Hospital



Crews begin setup of the Aqua Dam to surround Woman's Hospital
– Alongside Louisiana National Guard and DCI Inmates



Aqua Dam's deployed at US 190



Aqua Dam's at US 190



Damaged Bridges



TIGER DAMS



THE CAJUN NAVY TO THE RESCUE







Don't worry...



**We're Fine Here in
Louisiana!**



**DAVID MILLER, P.E.
CHIEF MAINTENANCE
ENGINEER**

DAVID.MILLER@LA.GOV

(225) 379-1552