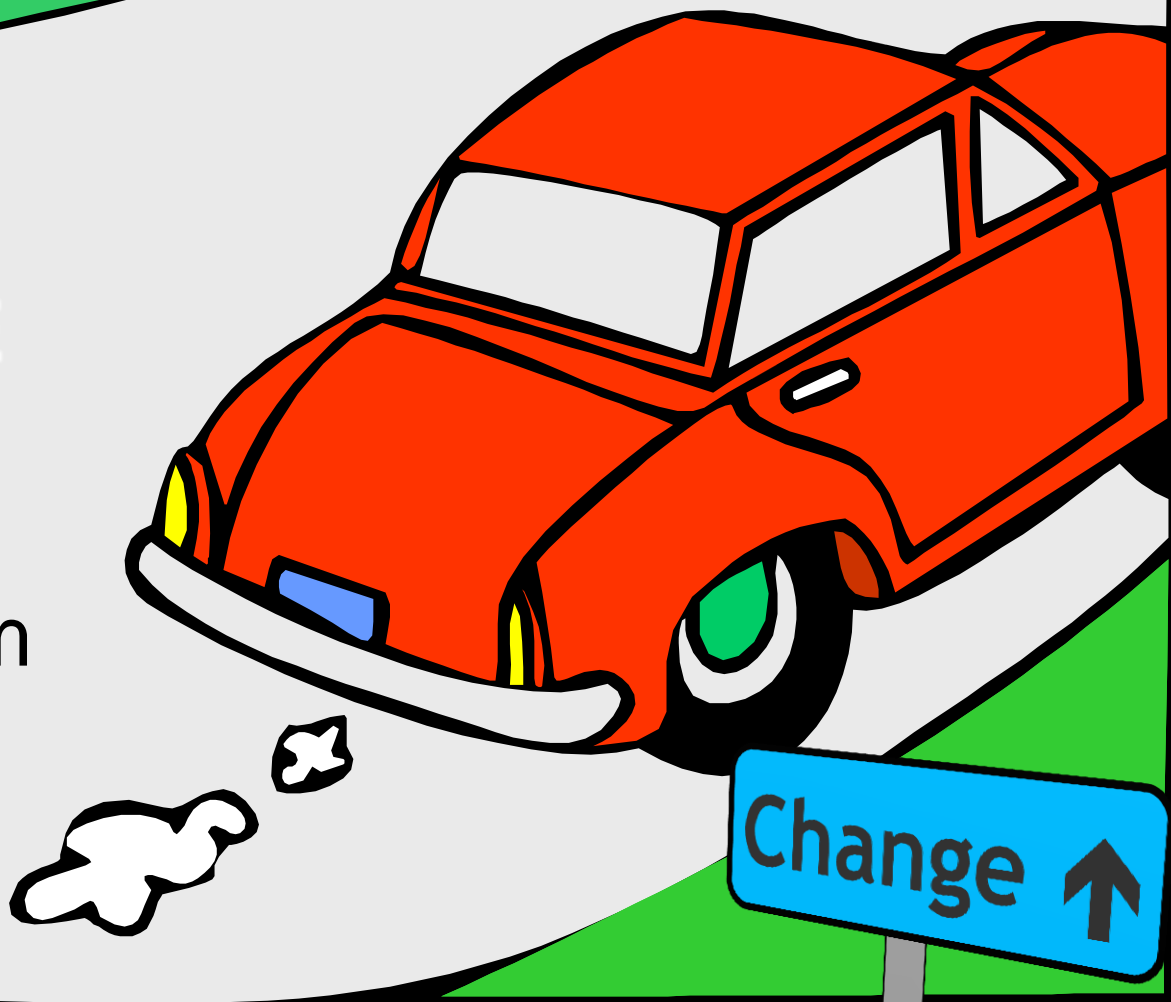


# LTAP Centers & Pavement Preservation

**David P. Orr, PE**  
Senior Engineer  
Cornell Local  
Roads Program



# Cornell Local Roads Program

- 1951
  - 1,600 municipalities
    - 114,000 miles
      - 6 FTE +
        - Circuit riders
  - NYS LTAP Center (1984)



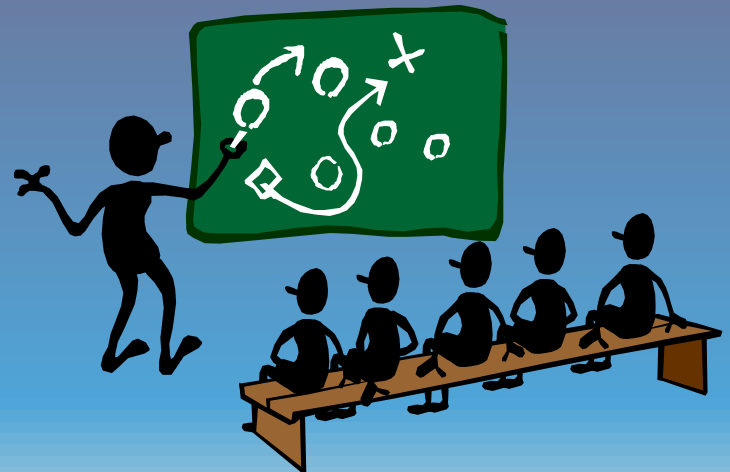
# Today's Acronyms

- LTAP →
  - Local Technical Assistance Program
- TTAP →
  - Tribal Technical Assistance Program
- [www.ltap.org](http://www.ltap.org)



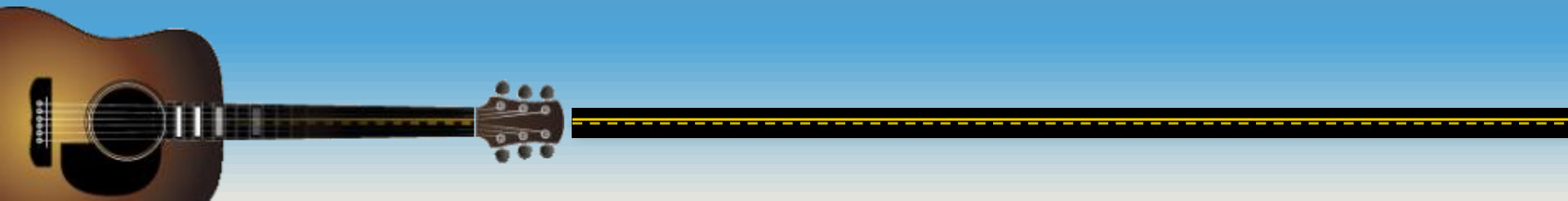
# LTAP Stats

- 58 centers
  - 50 states & Puerto Rico - LTAP
  - 7 Tribal centers - TTAP
- ~900,000 contact hours
- 3.35 FTE



# Focus Areas

- Worker safety
- Highway safety
- Infrastructure management
- Workforce development



# Things We Do

- Newsletter
- Workshops
- Conferences
- Special events & projects
- Library
- Internet
- Direct technical assistance





Volume XXV  
Number 3

October 2006

Sign of the Times

David P. Orr, P.E., Senior Engineer

## New York State to use the National MUTCD

### Good News

There is some good news with the coming changes. New York State sign numbers do not all match the National numbers for the same signs, which can cause problems when ordering signs. After implementing the National MUTCD and the New York State supplement, these problems will be avoided.

For example, if you want a Right Turn Warning sign today, you would order a 'W1-2'. If the vendor is not aware that you are referencing the New York State number, they might send a National W1-2 instead, one of which is a Left Curve Warning sign. A few more examples of the many discrepancies between the New York and National sign numbers include: 'W8-1', which in NY is the 'Road Work Ahead' sign, but in the national designation is a 'Bump' warning sign; 'W8-2' (NY=Shoulder Work Ahead, National=Dip); 'W8-3' (NY=Road Closed Ahead, National=Pavement Ends). Pictures of these examples are shown on page 10.

The National MUTCD is also available online for no charge, and can be downloaded in PDF format, which 17B NYCRR cannot. The web address for the National MUTCD is given on page 10.

Cornell Local Roads Program

### In this issue:

Harvesting the Wind: Lewis County's Flat Rock Wind Power Project.....	2
Financial Fitness: US Communities Government Purchasing Alliance..	4
Financial Information for the Highway Superintendent.....	5
From Our Library: New Materials for Loan....	6
Wonders of the Web..	7
Congratulations! 2005 Road Master Graduates.....	8
A new CLRP Workshop: Complete Streets - Planning Safer Communities for Bicyclists and Pedestrians.....	9
In the News: Porous Parking Lot Creates Local Buzz.....	11
Calendar.....	12
Assistance Request Form.....	Insert

October 2006

Continued on page 10



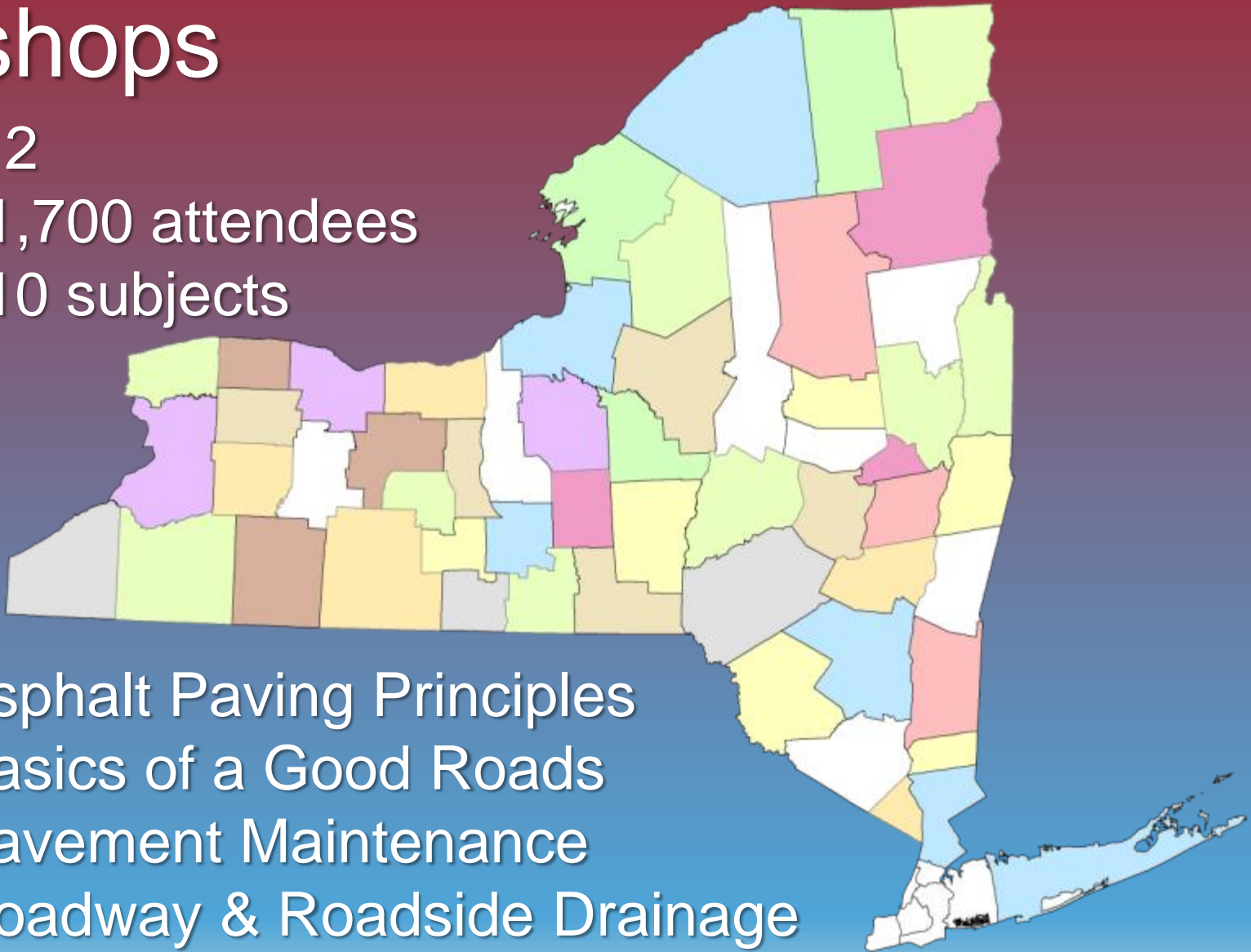


# Workshops

2012

- 1,700 attendees
- 10 subjects

Asphalt Paving Principles  
Basics of a Good Roads  
Pavement Maintenance  
Roadway & Roadside Drainage





# 67th Annual School for Highway Superintendents

- June 11-13, '12
- Ithaca
- 720 attendees



# 18<sup>th</sup> Statewide Conference on Local Bridges

- Training Session & Conference
  - October 23-25, 2012
- Syracuse
- 250 attendees



# Special Events & Projects

- 8-10 regional and statewide conferences
  - *Why Roads Fail*
  - *The Real Cost of Street Repairs*
- Research into critical current events
  - Effects of Marcellus Shale on roads
  - Meeting sign retroreflectivity standards





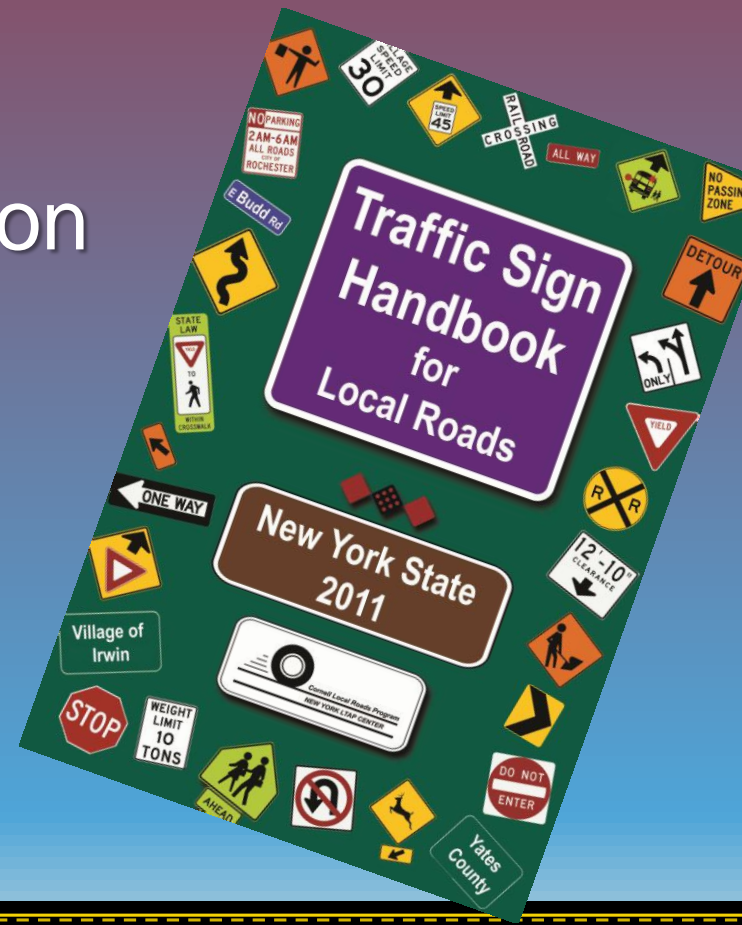
# Pavement Management Programs

- New York
- Maine
- Michigan
- Louisiana
- New Hampshire
- ...



# Library

- Videos
  - 330 currently in library
  - 62 Pavement preservation
- CLRP publications
  - Workshop manuals
  - Guides
- Other publications



# Internet

- [www.clrp.cornell.edu](http://www.clrp.cornell.edu)
- [www.ltap.org](http://www.ltap.org)

**Cornell Local Roads Program**

Program Information   Training & Events   Technical Assistance   Library   Resources & Links

## 2012 Workshop Schedule

[Registration Form \(PDF\)](#)  
[Find a workshop near you](#)

### Fall workshops

Basics of a Good Road  
A Highway Department's Legal Liabilities  
Managing People  
Pavement Maintenance  
~~Snow & Ice Control~~ - CANCELLED  
Surveying Methods

[Join us for a preview of our new Surveying workshop](#)



## News & Events

New "Quick Answer"  
[Can I use the new Clearview font with Street Name Signs?](#)

Join us for a new  
Surveying workshop preview  
August 21  
[Download the registration form \(PDF\)](#)

[Fracking Trucks and Local Roads](#)  
Lynne interviewed by Bloomberg

[Driverless Cars](#)  
Lynne interviewed by BBC

[Safe Routes to School Funding Announced](#)



## Categories

[QA Home / Recent Answers](#)

[Administration \(16\)](#)

[Bridges \(2\)](#)

[Communications Skills \(1\)](#)

[Computers](#)

[Culverts \(2\)](#)

[Drainage \(3\)](#)

[Environmental \(3\)](#)

[Equipment \(7\)](#)

[General Interest \(8\)](#)

[Liability/Legal \(16\)](#)

[Pavement Management \(1\)](#)

[Road Construction \(7\)](#)

[Road Design \(3\)](#)

[Road Maintenance \(8\)](#)

[Safety \(17\)](#)

[Traffic Control \(42\)](#)

[Winter Maintenance \(2\)](#)

[All Answers \(by Date\)](#)

NOTE: The number of answers in a category is shown in ( )

# Quick Answers

- What can I use to clean paving equipment other than diesel fuel?



# Technical Assistance

- Phone calls
- email
- on-site

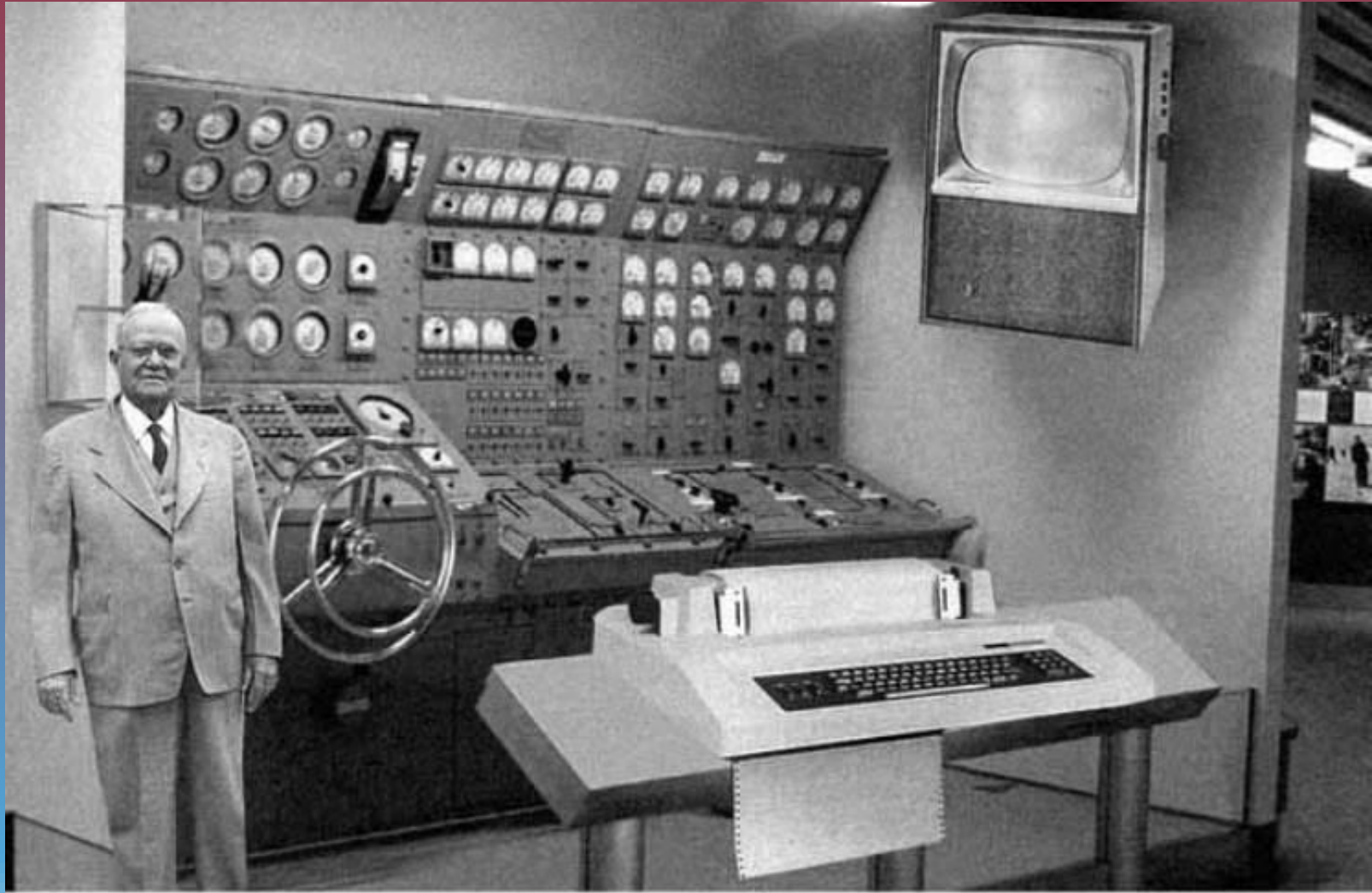


# Partners

- National
  - NACE
  - AASHTO
  - APWA
- Statewide associations
- Industry associations
  - LADA
  - NY Materials



# Think Long Term



**Thank You**

Cornell Local Roads Program  
416 Riley-Robb Hall  
Ithaca, NY 14853  
607-255-8033  
Fax: 255-4080  
dpo3@cornell.edu

