

2012 NCAT Pavement Test Track



- Pavement Preservation Experiment

2012 Track Research Cycle

- Traditional stand alones
 - Traffic continuation
 - Mill/Inlay
 - Structural Sections
- Green Group (GG)
- Preservation Group (PG)

- Safety Edge implementation (FHWA)

2012 Track Research Cycle

- Traditional stand alones
 - Traffic continuation
 - Mill/Inlay
 - Structural Sections
- Green Group (GG)
- Preservation Group (PG)
- Safety Edge implementation (FHWA)

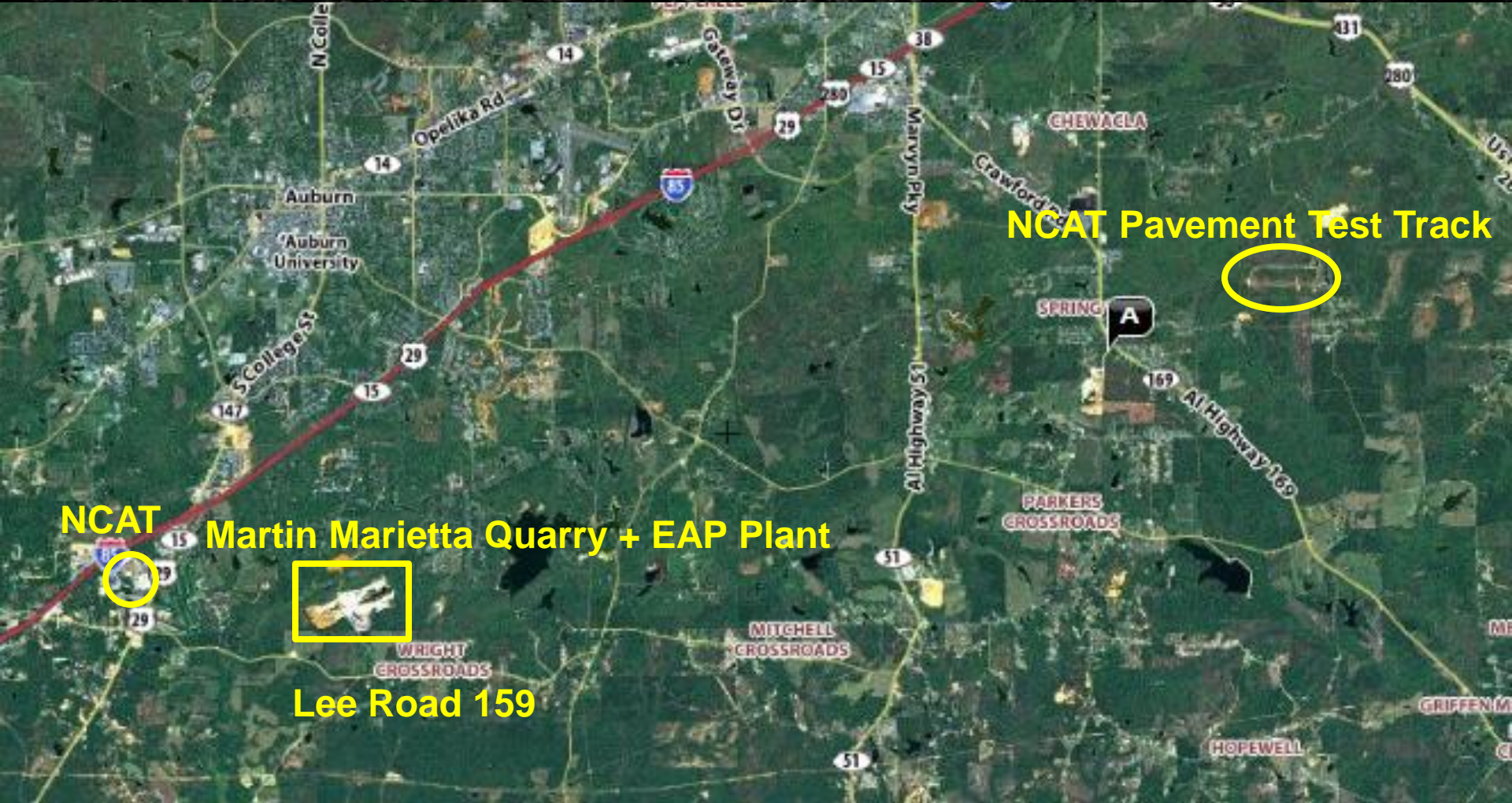
2012 Preservation Group (PG) Study

- Quantify life cycle benefit of study treatments
 - Time/traffic to return to pretreatment condition(s)
 - Life extension effect on underlying pavement
 - Test sections on the Track and Lee Road 159
- Sampling/testing for construction quality

2012 Preservation Group (PG) Study

- Quantify life cycle benefit of study treatments
 - Time/traffic to return to pretreatment condition(s)
 - Life extension effect on underlying pavement
 - Test sections on the Track and **Lee Road 159**
- Sampling/testing for construction quality

PG Sections on Lee Road 159



PG Sections on Lee Road 159



Martin Marietta Quarry

EAP's Auburn Plant

Lee Road 159

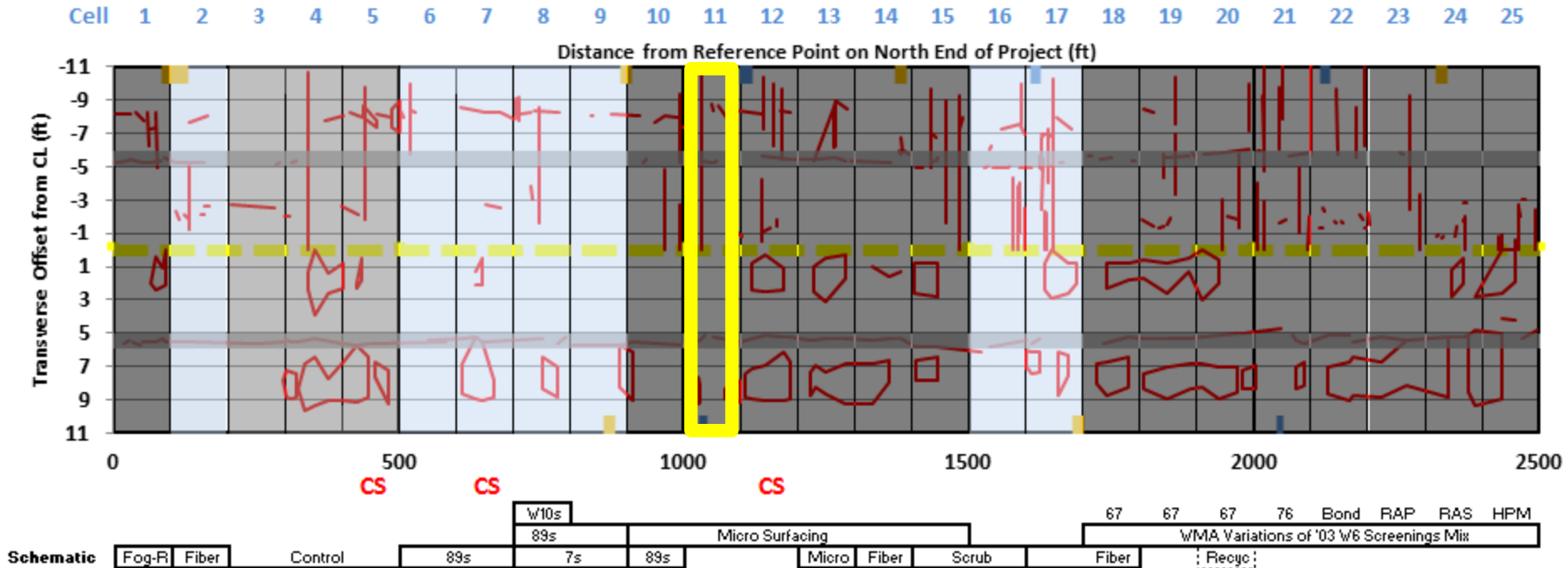
2012 Preservation Group (PG) Study

- Fog seals (with and without rejuvenators)
- Crack seals (routing/filling, hot air lance, go-type)
- Chip seals (single, double, triple, scrub, FiberMat)
- Cape seals (on chip/scrub seals, FiberMat)
- Micro surfacing (single, double, Capes)
- Plant mix overlays (4.75 screening mix variations)
- Ultra thin bonded wearing course
- Lightweight aggregates for surface treatments

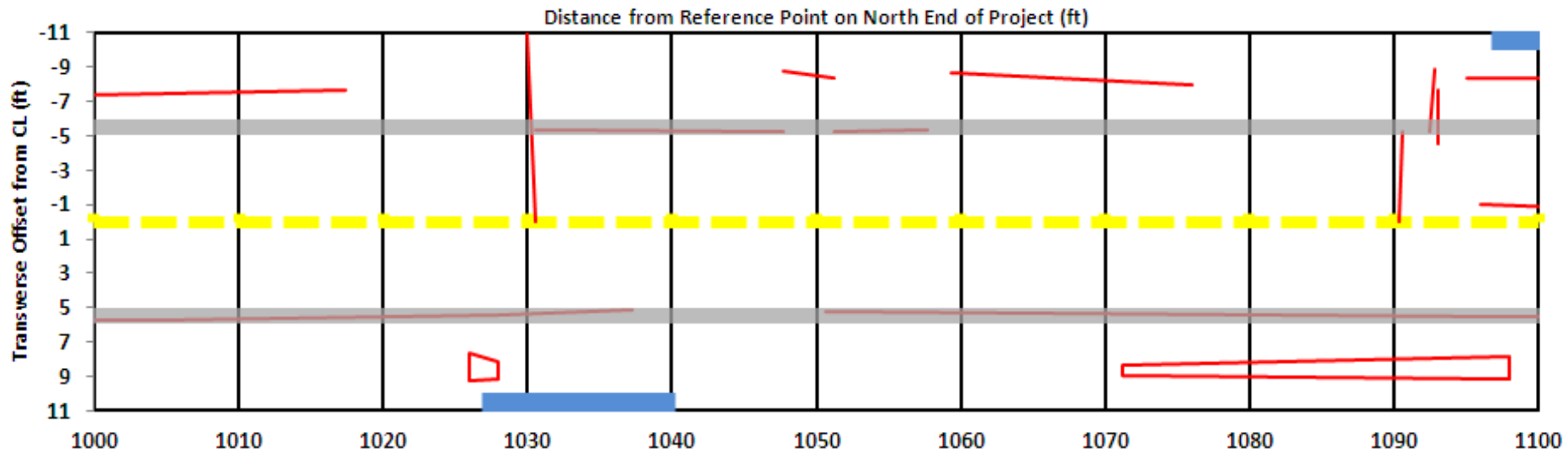
PG Sections on Lee Road 159



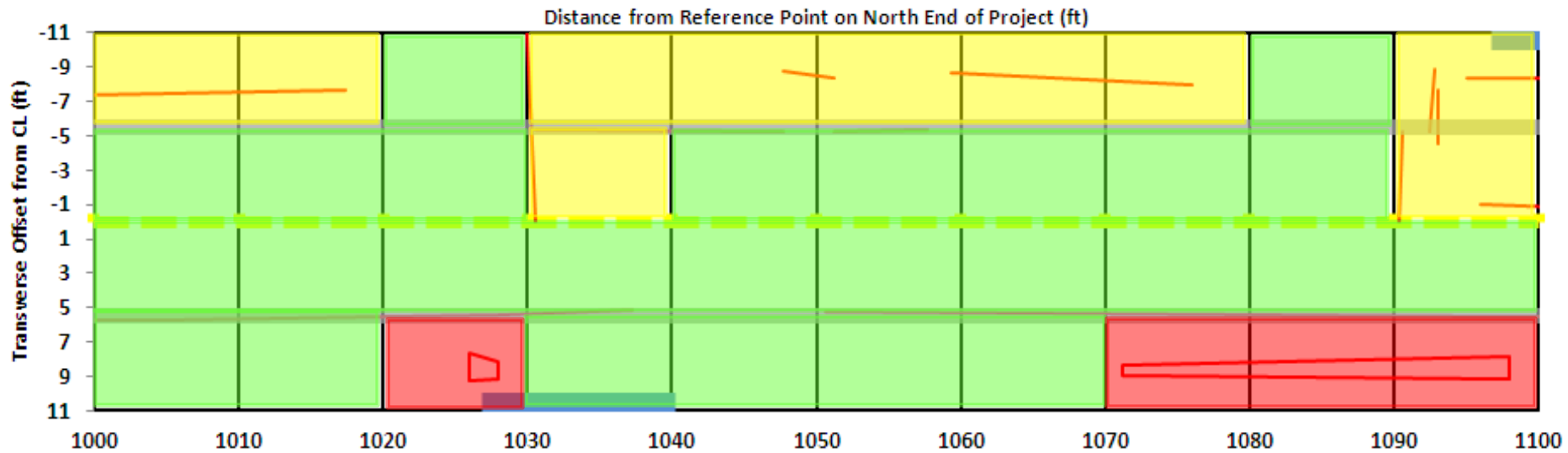
Recommendation for Lee Road 159



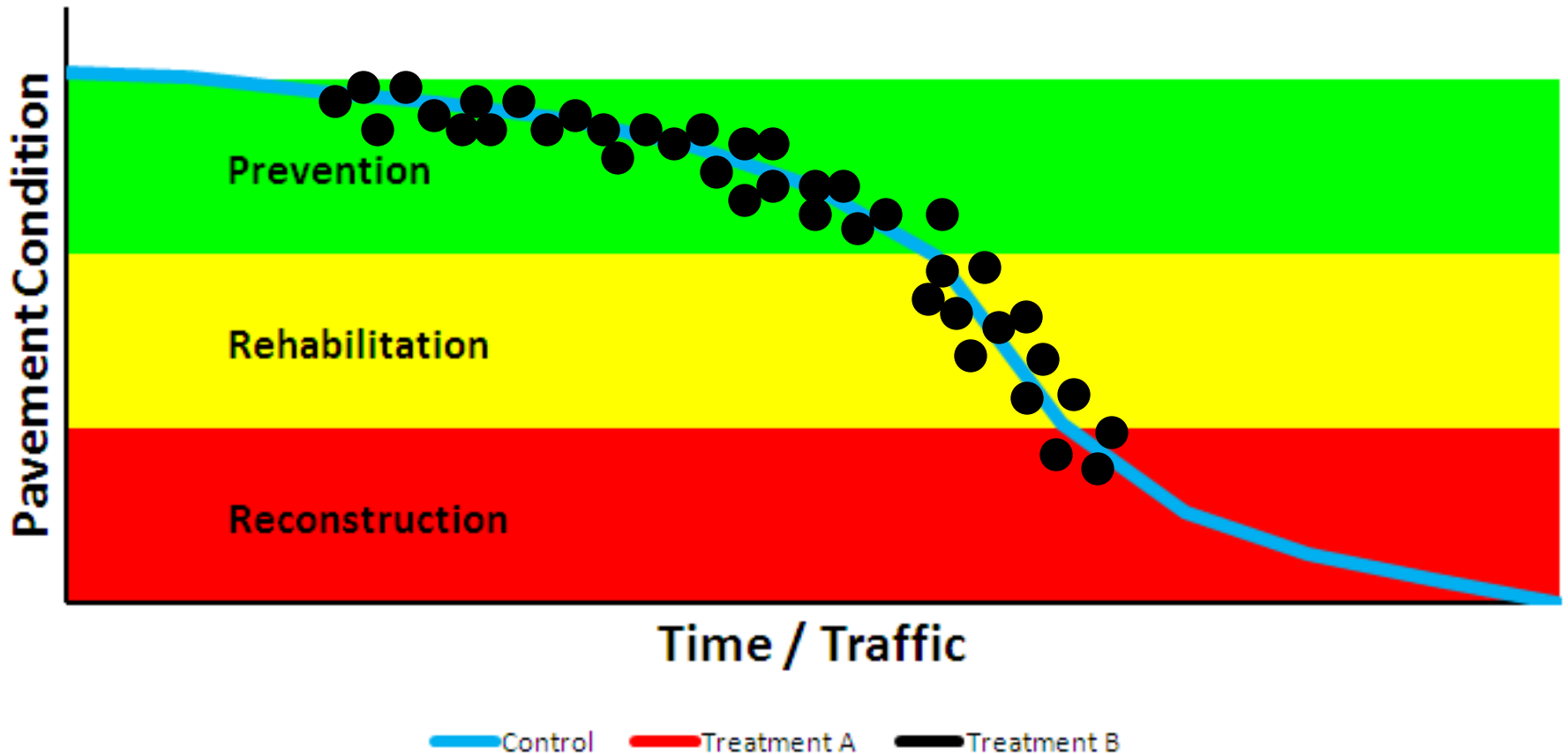
Recommendation for Lee Road 159



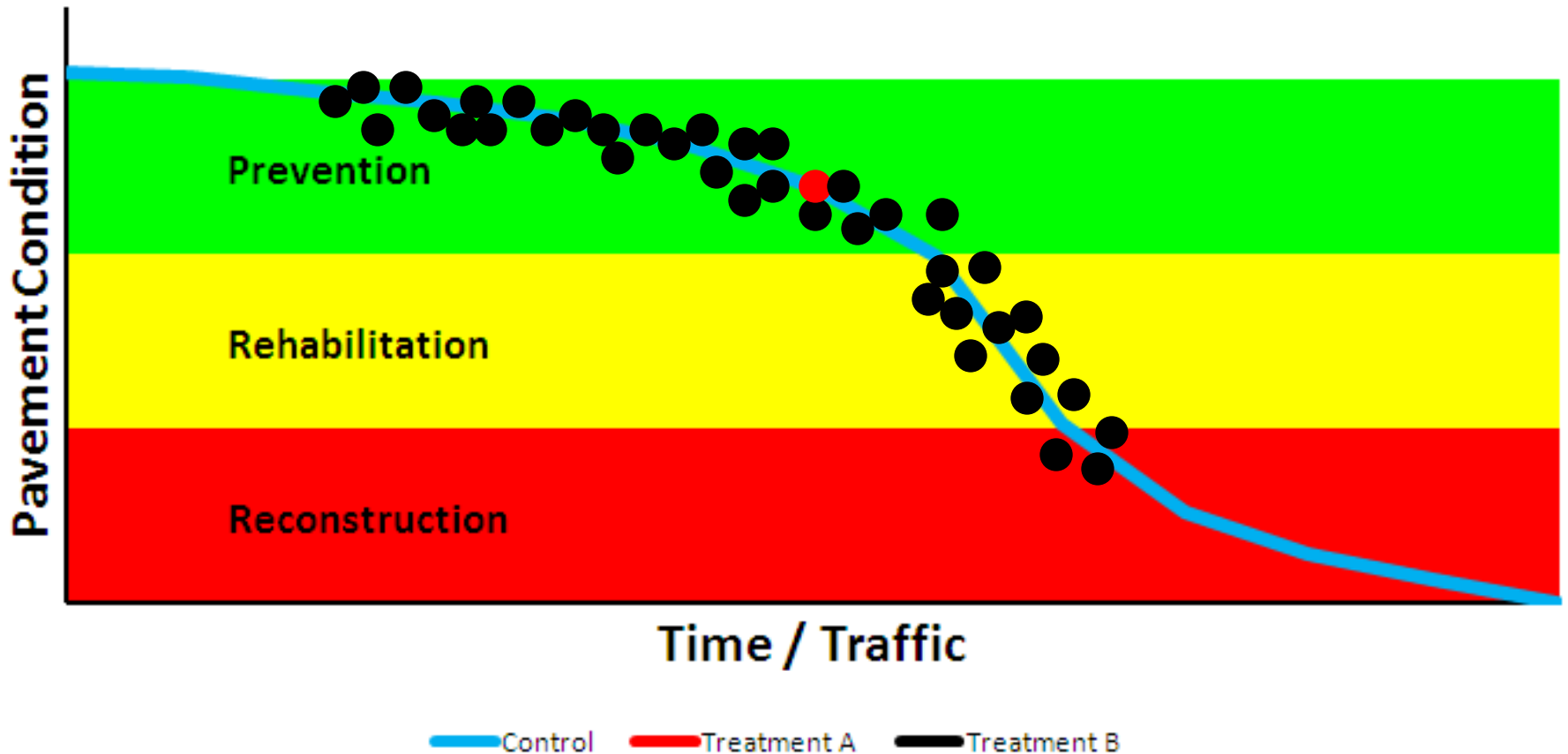
Recommendation for Lee Road 159



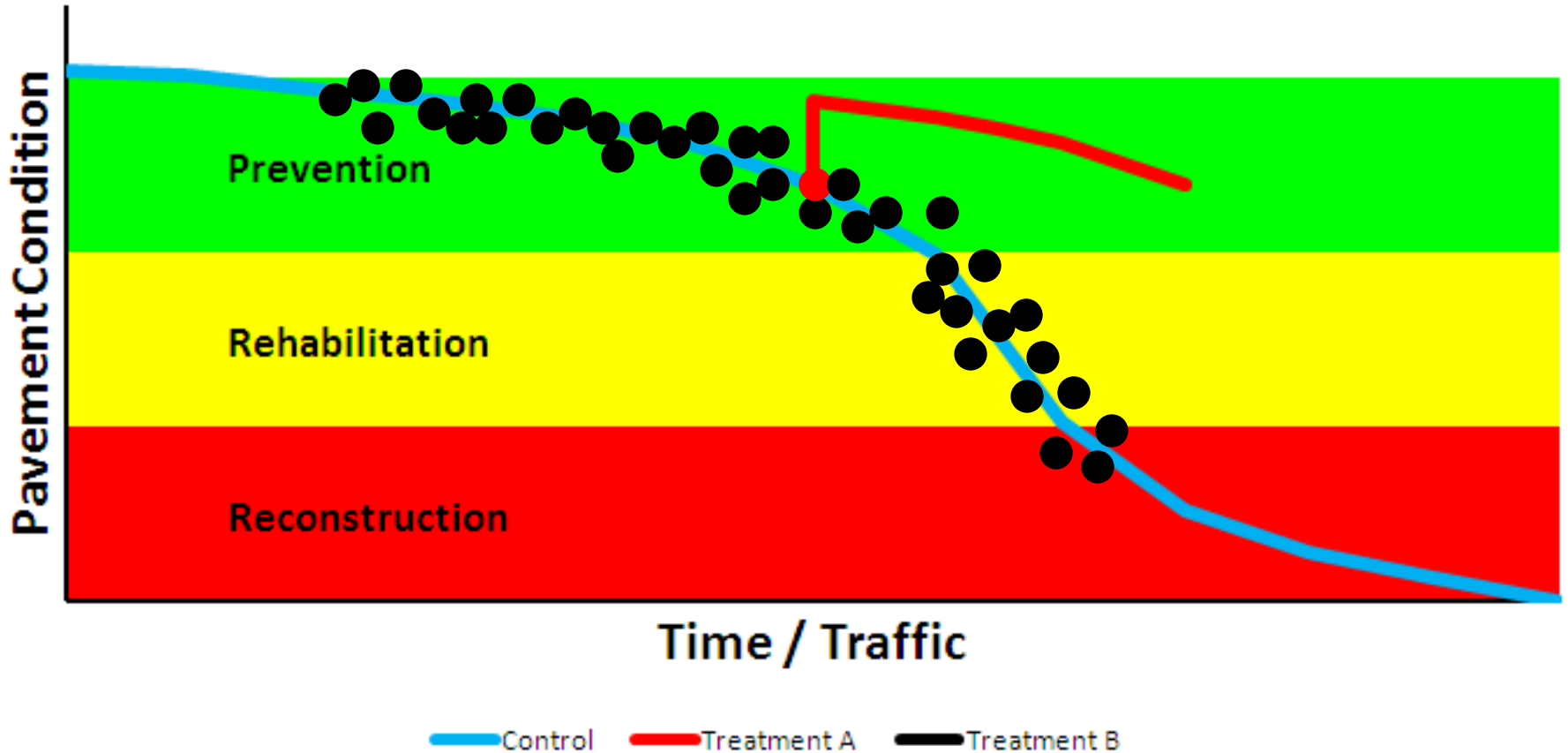
Lee Road 159 Implementable Findings



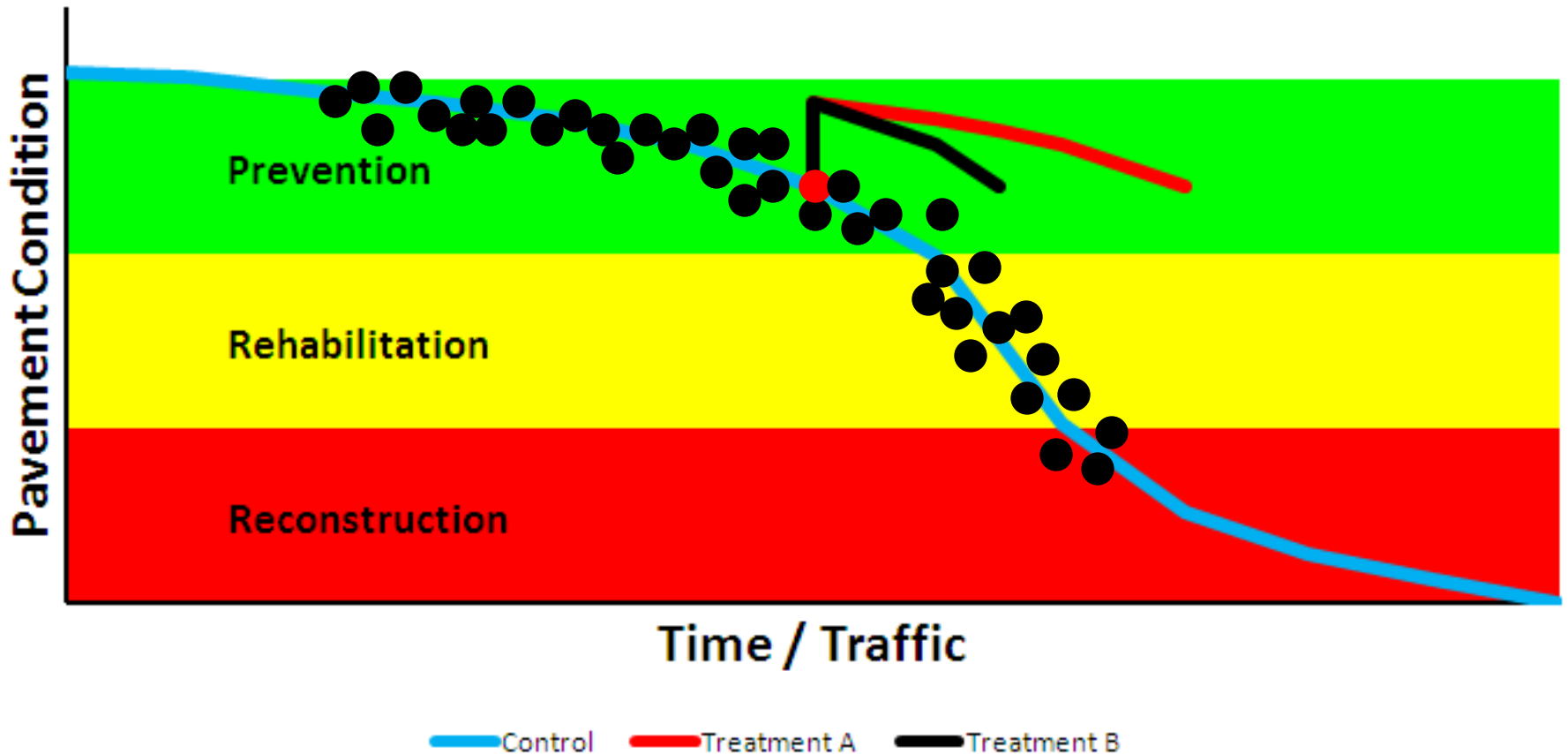
Lee Road 159 Implementable Findings



Lee Road 159 Implementable Findings



Lee Road 159 Implementable Findings



Lee Road 159 Implementable Finding



www.pavetrack.com



Performance

[Home](#)[Sponsors](#)[Information](#)[Construction](#)[Trucking](#)[Performance](#)

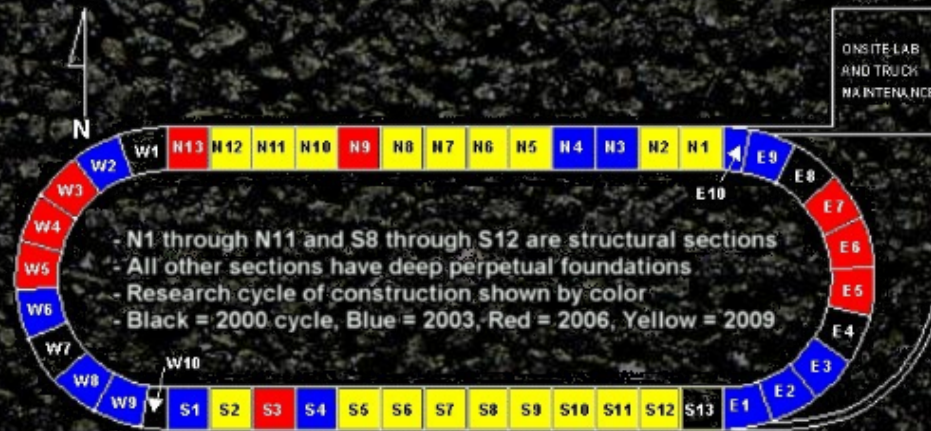
Click here for [the official NCAT web site](#), [Tracks in US](#), or [Tracks Worldwide](#)

Opelika, AL
Get the 10 day forecast

32°F
Clear
Feels Like: 25°F
Humidity: 31%
Wind: NW at 7 mph
Enter city/zip **GO!**

The Weather Channel
weather.com
Severe Weather
Vacation Planner
Sports Events
Special Events
Weather at 30,000 feet

Performance data for each section can be viewed by positioning your mouse over the section in question and left-clicking. Based on feedback from our research sponsors, the performance reports have been revised to include crack maps. The 2009 performance reports are now a fully integrated and active part of the web presentation.



HOTLINKS to [download PAVE reports](#), [review upcoming NCAT training courses](#), [query historical weather data](#), [view current color radar](#) or [preview local forecast](#).

1,439, 922 ESALs as of 2300 hours on December 5.

1	2	3	4	5	6	7	8	9	10	11	12	13	14	15	16	17	18	19	20	21	22	23	24	25
---	---	---	---	---	---	---	---	---	----	----	----	----	----	----	----	----	----	----	----	----	----	----	----	----

www.pooledfund.org/Details/Solicitation/1325



www.ncat.us

Dr. R. Buzz Powell, PE

Assistant Director & Test Track Manager

277 Technology Parkway
Auburn, AL 36830

Phone: (334) 844-6857

Cell: (334) 750-6293

Email: buzz@auburn.edu

Web: www.pavetrack.com

Twitter: www.twitter.com/pavetrack